



# V A L V E S

## WLVS / WLVT 2-Spool Loader Valve Assemblies



### FEATURES:

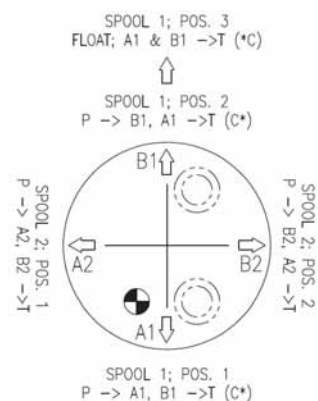
- **WLVS:** Series circuit, open center, convertible to power beyond only
- **WLVT:** Parallel circuit, open center, convertible to power beyond or closed center
- Conversion plugs are included
- Low spool leakage (3cc/min @ 1500 PSI)
- Adjustable inlet relief
- Load check on each spool
- Top & side inlet & outlet ports
- Float detent on spool A1-B1
- Joystick control w/dual spool lock
- Painted gloss black

THE WLVS SERIES VALVE IS NOT FOR USE IN CLOSED CENTER SYSTEMS

## WLVS / WLVT Assemblies, Parts and Accessories

MODEL NO.	DESCRIPTION	WEIGHT (POUNDS)	LIST PRICE
WLVS21CGB5A1	LOADER VALVE ASSY, SERIES CIRCUIT	13	422.00
WLVT21CGB5A1	LOADER VALVE ASSY, PARALLEL CIRCUIT	13	422.00

PART NO.	DESCRIPTION	LIST PRICE
660170106	POWER BEYOND PLUG ASSY	16.00
660170107	JOYSTICK KIT, COMPLETE W/HANDLE & BOOT	76.00



-VALVE MUST BE INSTALLED WITH WORK PORTS TOWARDS OPERATOR'S RIGHT TO ACHIEVE JOYSTICK FUNCTION SHOWN.  
- \* WHEN P.B. PLUG IS INSTALLED ON THE SERIES VALVE, ALL RETURN FLOW IS DIRECTED TO THE P.B. PLUG WHEN THE 1st SPOOL A1/B1 ALONE IS SHIFTED.

