



# PUMPS

## Hand Pumps



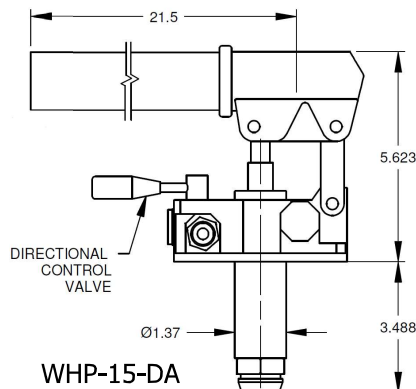
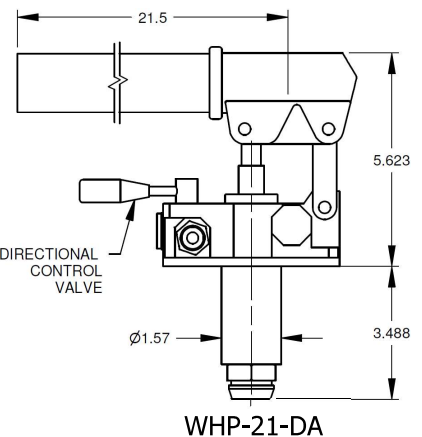
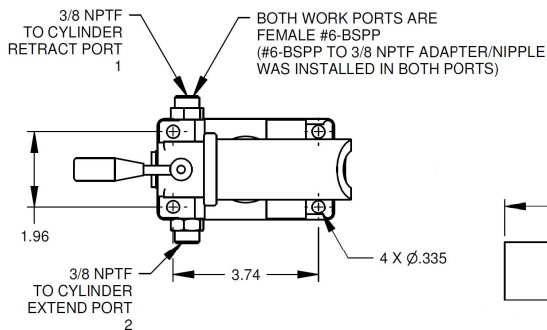
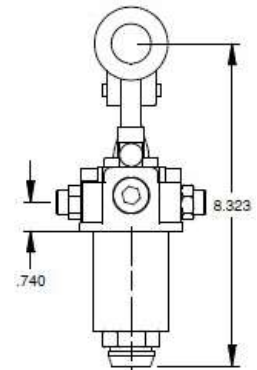
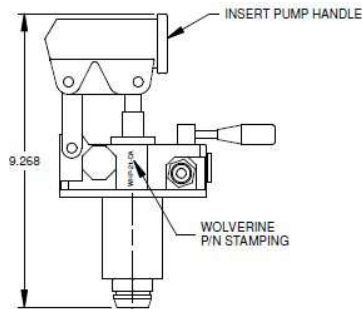
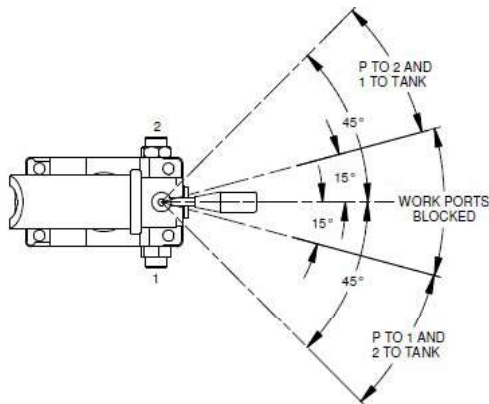
### FEATURES:

- Up to 3500 PSI Working Pressure
- "DA" Series have a built in Directional Control Valve
- 1.5 and 2.1 Cubic Inch Per Cycle (one up and one down)



## Hand Pumps – Double Acting Heads

MODEL No.	DESCRIPTION	SHIPPING WEIGHT (pounds)	LIST PRICE
WHP-15-DA	1.5 CUBIC INCH DOUBLE ACTING HEAD	10	249.00
WHP-21-DA	2.1 CUBIC INCH DOUBLE ACTING HEAD	10	276.00
240040088	HEAD / TANK SEAL KIT	1	41.00





# PUMPS

## Hand Pumps



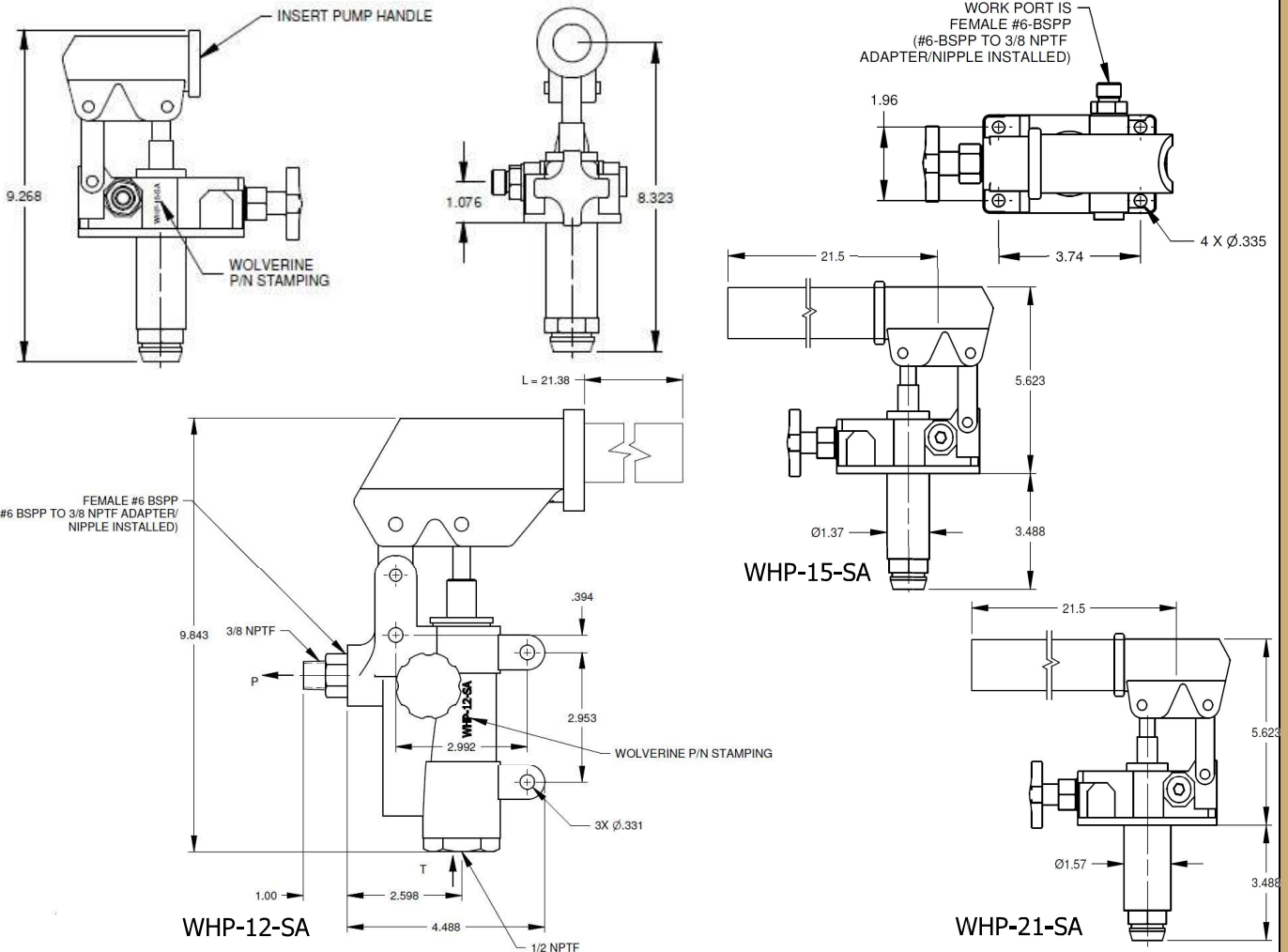
### FEATURES:

- Up to 3500 PSI Working Pressure
- "SA" Series is Single Acting
- 1.5 and 2.1 Cubic Inch Per Cycle (one up and one down)



## Hand Pumps – Single Acting Heads

MODEL No.	DESCRIPTION	SHIPPING WEIGHT (pounds)	LIST PRICE
WHP-15-SA	1.5 CUBIC INCH SINGLE ACTING HEAD	10	230.00
WHP-21-SA	2.1 CUBIC INCH SINGLE ACTING HEAD	10	256.00





# P U M P S

## Hand Pumps



### FEATURES:

- Steel tanks
- Mounting brackets standard feature
- Painted black
- Drain port 1/4 BSPP
- Fill port 3/8 BSPP

## Hand Pump Tanks

MODEL No.	DESCRIPTION	SHIPPING WEIGHT (pounds)	LIST PRICE
WHP-T-300	STEEL TANK, 300 CU IN. 1.3 GAL	7	100.00
WHP-T-180	STEEL TANK, 180 CU IN. 0.8 GAL	5	85.00
WHP-T-60	STEEL TANK, 60 CU IN. 0.25 GAL	4	71.00