



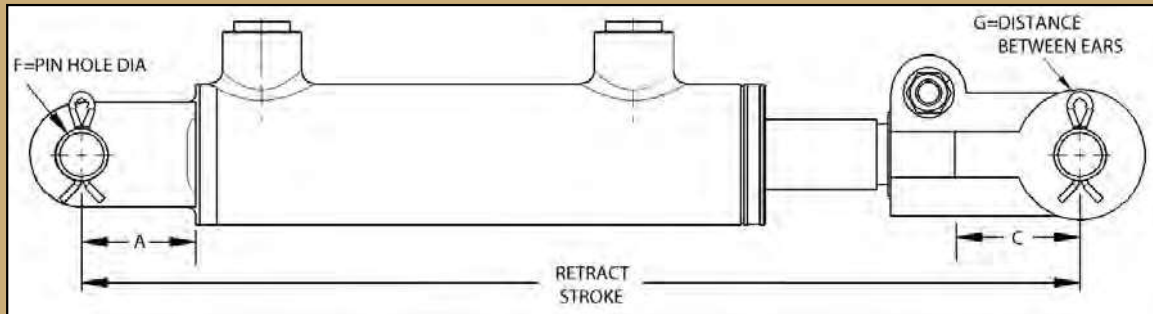
C Y L I N D E R S

3000 PSI Welded Adjustable Clevis Cylinders



FEATURES:

- 100% tested for quality assurance
- Hard chrome rod plating for corrosion & wear resistance
- Cast steel end fittings for high strength & low cost
- Top port design
- SAE O-ring ports for reliable & leak-free connection
- Spin on rod clevis
- Thread-in gland design for serviceability
- High luster black paint for protection from the elements
- Individually bagged & boxed for secure storage & transport



MODEL	BORE	PORTS	A	C	F	G
WWCL1500-S	1.5	SAE 6	1.63	1.62	0.75	0.88
WWCL2000-S	2.0	SAE 8	2.13	2.12	1.00	1.13
WWCL2500-S	2.5	SAE 8	2.13	2.13	1.00	1.13
WWCL3000-S	3.0	SAE 8	1.88	2.13	1.00	1.13
WWCL3500-S	3.5	SAE 8	1.88	2.13	1.00	1.13
WWCL4000-S	4.0	SAE 8	1.75	2.13	1.00	1.13

MODEL	BORE x STROKE			RETRACT	ROD DIA.	COLUMN LOAD RATINGS	WT/LBS	LIST PRICE
WWCL1504-S	1.5	X	4	14.25	1	FULL PSI	10	172.00
WWCL1506-S	1.5	X	6	16.25	1	FULL PSI	11	180.00
WWCL1508-S	1.5	X	8	18.25	1	FULL PSI	12	189.00
WWCL1508-ASAE	1.5	X	8	20.25	1	FULL PSI	13	192.00
WWCL1510-S	1.5	X	10	20.25	1	FULL PSI	13	196.00
WWCL1512-S	1.5	X	12	22.25	1	FULL PSI	15	204.00
WWCL1514-S	1.5	X	14	24.25	1	FULL PSI	16	211.00
WWCL1516-S	1.5	X	16	26.25	1	FULL PSI	17	219.00
WWCL1518-S	1.5	X	18	28.25	1	4800 (2720 PSI)*	18	228.00

WWCL2004-S	2	X	4	14.25	1.13	FULL PSI	16	222.00
WWCL2006-S	2	X	6	16.25	1.13	FULL PSI	17	230.00
WWCL2008-S	2	X	8	18.25	1.13	FULL PSI	19	239.00
WWCL2008-ASAE	2	X	8	20.25	1.13	FULL PSI	20	245.00
WWCL2010-S	2	X	10	20.25	1.13	FULL PSI	20	249.00
WWCL2012-S	2	X	12	22.25	1.13	FULL PSI	22	258.00
† WWCL2014-S	2	X	14	24.25	1.13	FULL PSI	24	Call
WWCL2016-S	2	X	16	26.25	1.13	FULL PSI	25	277.00
WWCL2018-S	2	X	18	28.25	1.13	FULL PSI	27	287.00
WWCL2020-S	2	X	20	30.25	1.13	9100 (2900 PSI)*	28	296.00
WWCL2024-S	2	X	24	34.25	1.13	6700 (2130 PSI)*	31	315.00
WWCL2030-S	2	X	30	40.25	1.13	4600 (1470 PSI)*	36	343.00
WWCL2036-S	2	X	36	46.25	1.13	3400 (1080 PSI)*	41	370.00

† NON-STOCKED ITEMS AVAILABLE AT STANDARD LEAD-TIME.

CHECK OUR PRINCE WEBSITE OR CONTACT YOUR SALES REP TO VERIFY IF NON-STOCKED ITEMS ARE STILL ON HAND FOR IMMEDIATE SHIPMENT.



C Y L I N D E R S

3000 PSI Welded Adjustable Clevis Cylinders

MODEL	BORE x STROKE		RETRACT	ROD DIA.	COLUMN LOAD RATINGS	WT/LBS	LIST PRICE
† WWCL2504-S	2.5	X 4	14.25	1.25	FULL PSI	19	Call
WWCL2506-S	2.5	X 6	16.25	1.25	FULL PSI	21	265.00
WWCL2508-S	2.5	X 8	18.25	1.25	FULL PSI	23	275.00
WWCL2508-ASAE	2.5	X 8	20.25	1.25	FULL PSI	24	282.00
WWCL2510-S	2.5	X 10	20.25	1.25	FULL PSI	24	287.00
WWCL2512-S	2.5	X 12	22.25	1.25	FULL PSI	26	298.00
† WWCL2514-S	2.5	X 14	24.25	1.25	FULL PSI	28	Call
WWCL2516-S	2.5	X 16	26.25	1.25	FULL PSI	30	320.00
† WWCL2518-S	2.5	X 18	28.25	1.25	FULL PSI	32	Call
WWCL2520-S	2.5	X 20	30.25	1.25	FULL PSI	34	343.00
† WWCL2524-S	2.5	X 24	34.25	1.25	14000 (2850 PSI)*	38	Call
† WWCL2530-S	2.5	X 30	40.25	1.25	9600 (1960 PSI)*	44	Call
† WWCL2536-S	2.5	X 36	46.25	1.25	7000 (1430 PSI)*	49	Call
† WWCL2548-S	2.5	X 48	58.25	1.25	3500 (710 PSI)*	50	Call
WWCL3004-S	3	X 4	14.25	1.5	FULL PSI	24	306.00
WWCL3006-S	3	X 6	16.25	1.5	FULL PSI	26	320.00
WWCL3008-S	3	X 8	18.25	1.5	FULL PSI	29	334.00
WWCL3008-ASAE	3	X 8	20.25	1.5	FULL PSI	31	339.00
WWCL3010-S	3	X 10	20.25	1.5	FULL PSI	31	345.00
† WWCL3012-S	3	X 12	22.25	1.5	FULL PSI	34	Call
WWCL3014-S	3	X 14	24.25	1.5	FULL PSI	36	375.00
WWCL3016-S	3	X 16	26.25	1.5	FULL PSI	39	389.00
† WWCL3018-S	3	X 18	28.25	1.5	FULL PSI	41	Call
WWCL3020-S	3	X 20	30.25	1.5	18800 (2660 PSI)*	43	417.00
† WWCL3024-S	3	X 24	34.25	1.5	14000 (1980 PSI)*	48	Call
† WWCL3030-S	3	X 30	40.25	1.5	9600 (1360 PSI)*	56	Call
† WWCL3036-S	3	X 36	46.25	1.5	7000 (990 PSI)*	63	Call
WWCL3504-S	3.5	X 4	14.25	1.75	FULL PSI	29	357.00
† WWCL3506-S	3.5	X 6	16.25	1.75	FULL PSI	32	Call
† WWCL3508-S	3.5	X 8	18.25	1.75	FULL PSI	35	Call
† WWCL3508-ASAE	3.5	X 8	20.25	1.75	FULL PSI	38	Call
† WWCL3510-S	3.5	X 10	20.25	1.75	FULL PSI	38	Call
† WWCL3512-S	3.5	X 12	22.25	1.75	FULL PSI	41	Call
† WWCL3514-S	3.5	X 14	24.25	1.75	FULL PSI	44	Call
† WWCL3516-S	3.5	X 16	26.25	1.75	FULL PSI	47	Call
† WWCL3518-S	3.5	X 18	28.25	1.75	FULL PSI	50	Call
† WWCL3520-S	3.5	X 20	30.25	1.75	FULL PSI	53	Call
WWCL3524-S	3.5	X 24	34.25	1.75	26000 (2700 PSI)*	59	525.00
† WWCL3530-S	3.5	X 30	40.25	1.75	17900 (1860 PSI)*	68	Call
† WWCL3536-S	3.5	X 36	46.25	1.75	13000 (1350 PSI)*	78	Call
WWCL4004-S	4	X 4	14.25	2	FULL PSI	35	424.00
† WWCL4006-S	4	X 6	16.25	2	FULL PSI	38	Call
† WWCL4008-S	4	X 8	18.25	2	FULL PSI	42	Call
WWCL4008-ASAE	4	X 8	20.25	2	FULL PSI	46	472.00
WWCL4010-S	4	X 10	20.25	2	FULL PSI	46	482.00
WWCL4012-S	4	X 12	22.25	2	FULL PSI	49	502.00
† WWCL4014-S	4	X 14	24.25	2	FULL PSI	53	Call
WWCL4016-S	4	X 16	26.25	2	FULL PSI	57	539.00
WWCL4018-S	4	X 18	28.25	2	FULL PSI	60	559.00
† WWCL4020-S	4	X 20	30.25	2	FULL PSI	64	Call
WWCL4024-S	4	X 24	34.25	2	FULL PSI	71	618.00
† WWCL4030-S	4	X 30	40.25	2	25200 (2010 PSI)*	83	Call
† WWCL4036-S	4	X 36	46.25	2	18200 (1450 PSI)*	94	Call

*THESE MODELS HAVE A COLUMN LOAD RESTRICTION THAT LIMITS THE MAXIMUM PUSH LOAD THAT THE CYLINDER CAN SAFELY BE OPERATED AT.

UNIVERSAL SEAL KITS			
PART NO.	DESCRIPTION	PART NO.	DESCRIPTION
PMCK-WW1500	1.5 BORE	PMCK-WW3000	3 BORE
PMCK-WW2000	2 BORE	PMCK-WW3500	3.5 BORE
PMCK-WW2500	2.5 BORE	PMCK-WW4000	4 BORE

† NON-STOCKED ITEMS AVAILABLE AT STANDARD LEAD-TIME.

CHECK OUR PRINCE WEBSITE OR CONTACT YOUR SALES REP TO VERIFY IF NON-STOCKED ITEMS ARE STILL ON HAND FOR IMMEDIATE SHIPMENT.