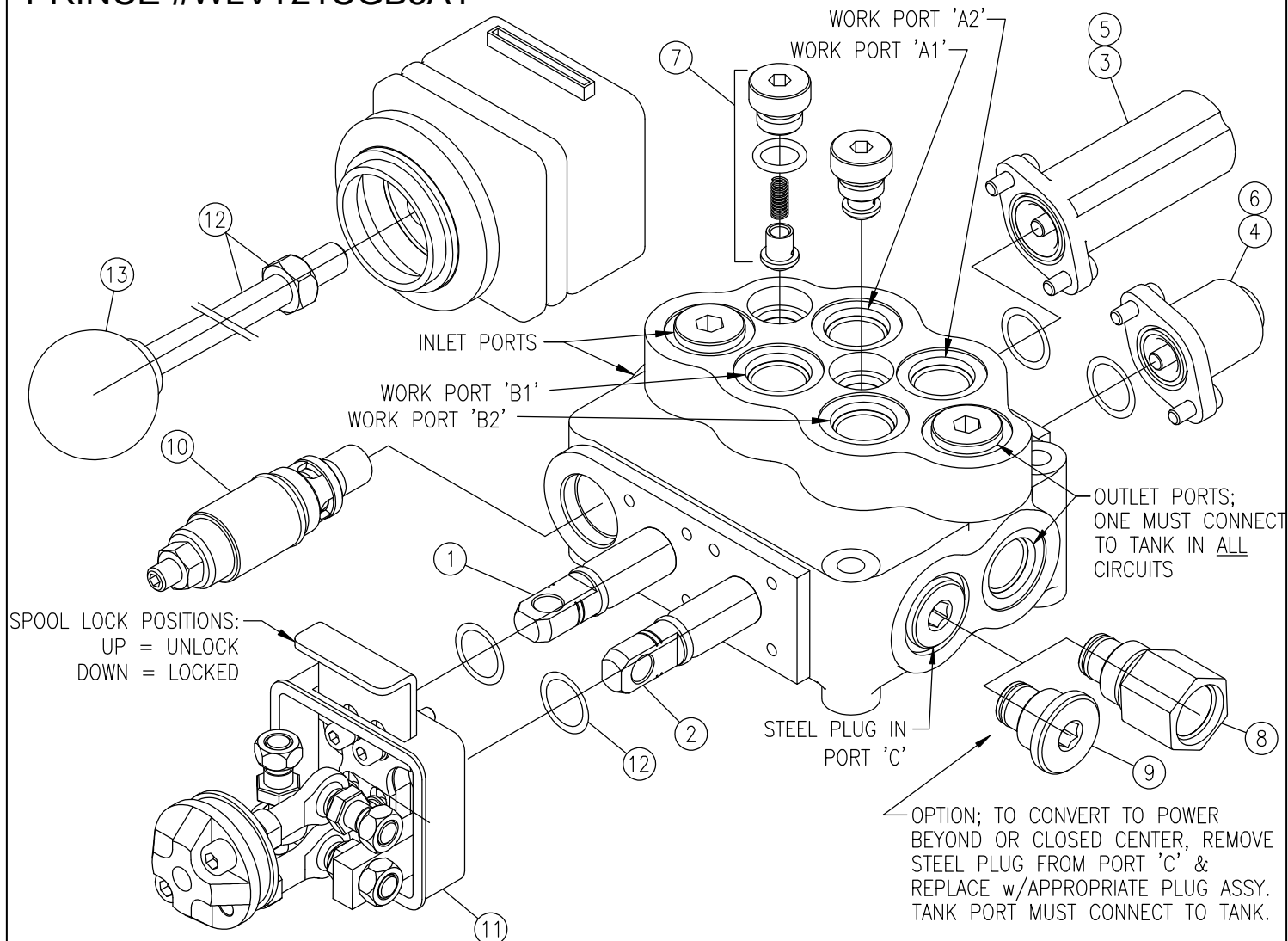


PRINCE #WLVT21CGB5A1



TORQUE NOTES:

RELIEF CARTRIDGE: 15-20 FT-LB.

POWER BEYOND CONV PLUG: 25 FT-LB.

CLOSED CENTER CONV PLUG: 25 FT-LB.

**FOR STANDARD MODELS AVAILABLE
& ADDITIONAL INFORMATION GO TO:
www.princehyd.com**

REPAIR PARTS LIST

ITEM:	PMC P/N:	DESCRIPTION:
1	612104092	SPOOL, FLOAT (A1/B1)
2	612104093	SPOOL, TANDEM CENTER (A2/B2)
3	660170103	SPRING CENTER W/FLOAT KIT
4	660170104	SPRING CENTER KIT
5	660170108	END CAP W/ BOLTS, FLOAT
6	660170109	END CAP W/ BOLTS, SPR CNTR
7	660170105	LOAD CHECK KIT
8	660170106	POWER BEYOND PLUG ASSY
9	660170111	CLOSED CENTER CONV. PLUG
10	660270014	RELIEF CARTRIDGE ASSY
11	660170107	COMPLETE JOYSTICK/HANDLE KIT
12	660170112	HANDLE & NUT KIT
13	670400134	KNOB
14	660570008	SEAL KIT

PRINCE WOLVERINE MODEL WLVT21CGB5A1 SPECIFICATIONS:

PARALLEL CIRCUIT DESIGN

MAX. OPERATING PRESSURE: 3625 PSI

MAXIMUM TANK PRESSURE: 290 PSI

NOMINAL FLOW RATING: 12 GPM

FILTRATION RECOMMENDATIONS: ISO 4406 19/17/14

STANDARD PORT SIZE (INLET, OUTLET, WORK PORTS, POWER BEYOND PLUG):

#8 SAE ORB, 3/4-16UNF-2B

RECOMMENDED FLUID: HIGH QUALITY MINERAL BASED HYDRAULIC FLUID
WITH VISCOSITY FROM 12 cSt TO 400 cSt.

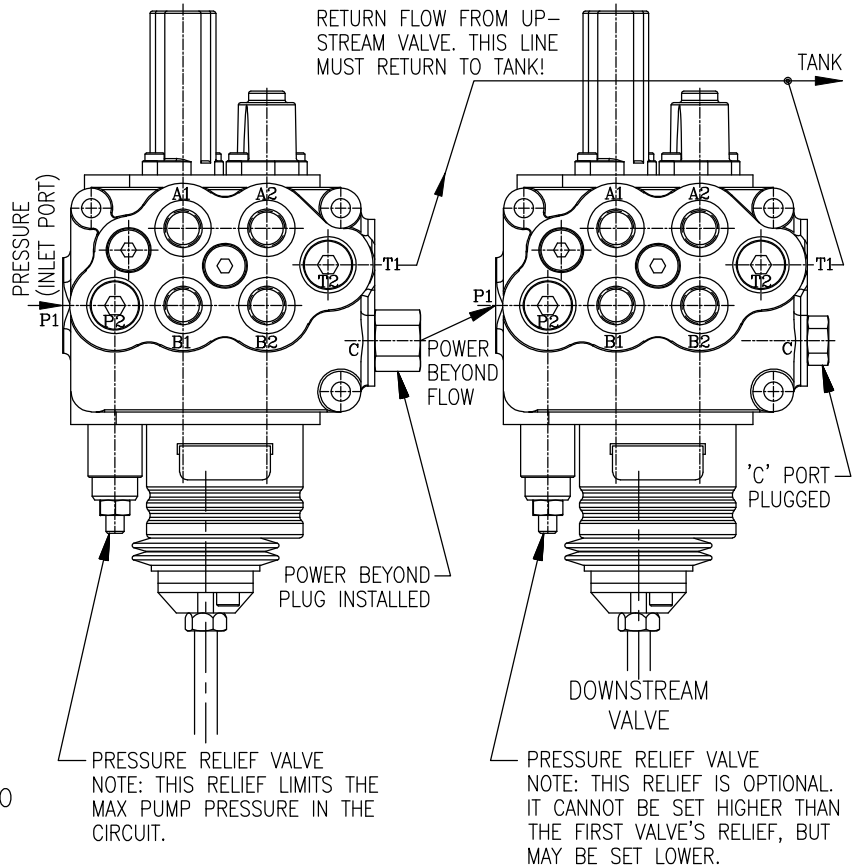
RELIEF VALVE: AN ADJUSTABLE RELIEF VALVE CARTRIDGE IS STANDARD ON WLVT21CGB5A1 VALVES. THE STANDARD FACTORY SETTING IS 2500 PSI @ 10 GPM. STANDARD ADJUSTMENT RANGE IS 2000-3500 PSI. THE RELIEF SETTING IS ADJUSTED BY LOOSENING THE JAM NUT, AND TURNING THE ADJUSTING SCREW. TURNING THE ADJUSTING SCREW CLOCKWISE INCREASES RELIEF PRESSURE AND COUNTERCLOCKWISE DECREASES RELIEF PRESSURE (A PRESSURE GAUGE MUST BE INSTALLED IN THE INLET LINE OR PORT WHENEVER THE RELIEF PRESSURE IS ADJUSTED).

WARNING: OVERPRESSURE MAY CAUSE SUDDEN AND UNEXPECTED FAILURE OF A COMPONENT IN THE HYDRAULIC SYSTEM RESULTING IN SERIOUS PERSONAL INJURY. ALWAYS USE A GAUGE WHEN ADJUSTING A RELIEF VALVE.

EXAMPLE WLVT21CGB5A1 VALVE CIRCUIT USING OPTIONAL POWER BEYOND PORT:

OPTIONAL POWER BEYOND OPERATION:

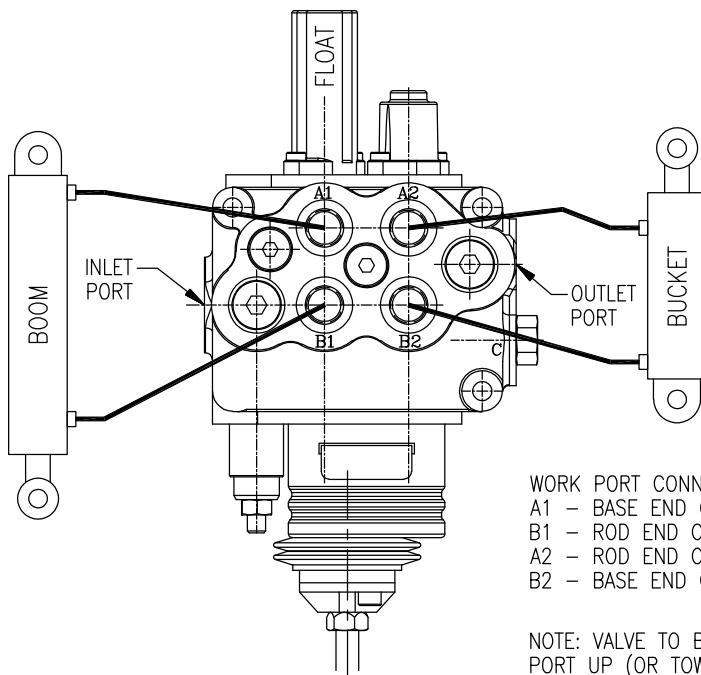
A POWER BEYOND PLUG ASSY IS INCLUDED WITH VALVE, BUT IS SHIPPED UNINSTALLED. REMOVE & DISCARD STEEL PLUG FROM PORT 'C' OF UPSTREAM VALVE. INSTALL POWER BEYOND PLUG ASSY INTO PORT 'C'. CONNECT A HYDRAULIC LINE FROM THE POWER BEYOND PORT TO A DOWN STREAM FUNCTION, AND ALSO A LINE FROM THE TANK PORT 'T' TO TANK. WITH ALL SPOOLS CENTERED, OIL FLOW IS DIRECTED TO THE POWER BEYOND PORT FOR USE BY THE DOWNSTREAM VALVE. WHEN A SPOOL IS SHIFTED, OIL WILL BE DIRECTED TO A WORK PORT AND THE RETURN FLOW GOES TO TANK.



OPTIONAL CLOSED CENTER OPERATION:

A CLOSED CENTER CONVERSION PLUG ASSY IS INCLUDED WITH VALVE, BUT IS SHIPPED UNINSTALLED. REMOVE & DISCARD STEEL PLUG FROM PORT 'C' OF VALVE. INSTALL CLOSED CENTER CONV PLUG ASSY INTO PORT 'C'. CONNECT A LINE FROM THE TANK PORT 'T' TO TANK.

EXAMPLE WLVT21CGB5A1 LOADER VALVE HYDRAULIC CIRCUIT (OPEN CENTER):

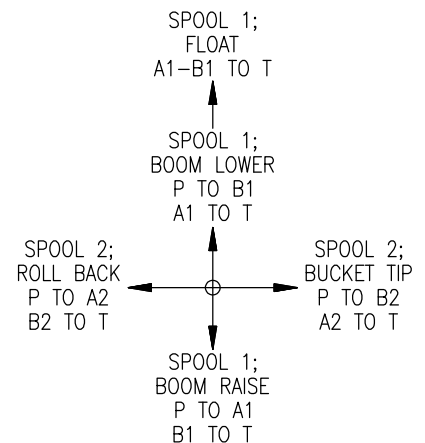
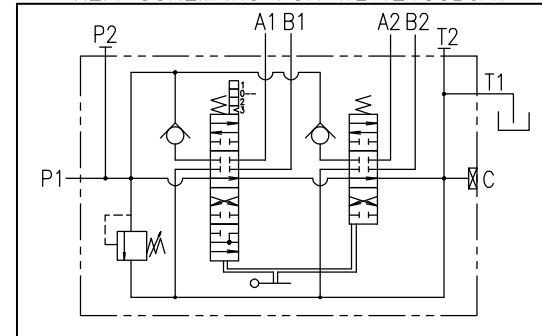


WORK PORT CONNECTIONS:

A1 - BASE END OF BOOM CYLINDER
B1 - ROD END OF BOOM CYLINDER
A2 - ROD END OF BUCKET CYLINDER
B2 - BASE END OF BUCKET CYLINDER

NOTE: VALVE TO BE ORIENTED WITH INLET PORT UP (OR TOWARDS FRONT), AND WORK PORTS TOWARDS OPERATOR'S RIGHT TO ACHIEVE THIS HANDLE SHIFT PATTERN.

REF. SCHEMATIC FOR WLVT21CGB5A1



FOR STANDARD MODELS AVAILABLE & ADDITIONAL INFORMATION GO TO: www.princehyd.com