

PRODUCT NOTES:

1. MAX. DESIGN & TEST PRESSURE: 3000 PSI
2. HEAD ASSY., P/N #090000122, AVAILABLE COMPLETE WITH INTERNAL PARTS AND PACKING.
3. RESERVOIR CAPACITY: 1/2 GALLON
4. TO USE HAND PUMP IN VERTICAL APPLICATION, INTERCHANGE BREATHER, ITEM 16, WITH PIPE PLUG, ITEM 20.
5. ASSEMBLE SEATS, ITEM 9, WITH LOCTITE #RC/680 APPLIED PER PMQC-1.
6. PAINT INSTRUCTIONS: RED PER PMS-00101.

GENERAL INFORMATION:

- A. UNLESS OTHERWISE SPECIFIED, THIS PRODUCT IS DESIGNED FOR USE WITH A GOOD QUALITY PETROLEUM BASED HYDRAULIC FLUID.
- B. THIS DRAWING IS THE PROPERTY OF PRINCE MFG. CORP., AND USE IN ANY MANNER DETRIMENTAL TO THE INTERESTS OF PRINCE MFG. CORP. IS PROHIBITED.

SM	REVISION
C	REDRAWN, NO CHANGE, ECN13646, 10/12/99 MOHR
D	ITEM 6 WAS 180901085, ECN #14167, 4-6-00 MOHR
E	PACKING KIT WAS PMCK-PM-HP-5B; ECN-17065; 4-21-03 HV
F	P/N 230010685 WAS 230010324; ECN-17822; 6-11-04 HV
G	ADD ITEM 38, ECN 18380 6-30-05 LG

DRAWN BY: DV	DATE: 4-16-90
CHECKED BY: MOHR	DATE: 7-26-90
APPROVED BY: JKW	DATE: 7-26-90
TOLERANCES: ANGLES ±1°	FRACTION ±1/32 [± 0.79]
	.00 ±.010 [±0.25]
	.000 ±.005 [± 0.13]
DEBURR & BREAK ALL EDGES DO NOT SCALE DRAWING	
DIMENSIONS ARE IN INCHES OR [MILLIMETERS] UNLESS OTHERWISE SPECIFIED	

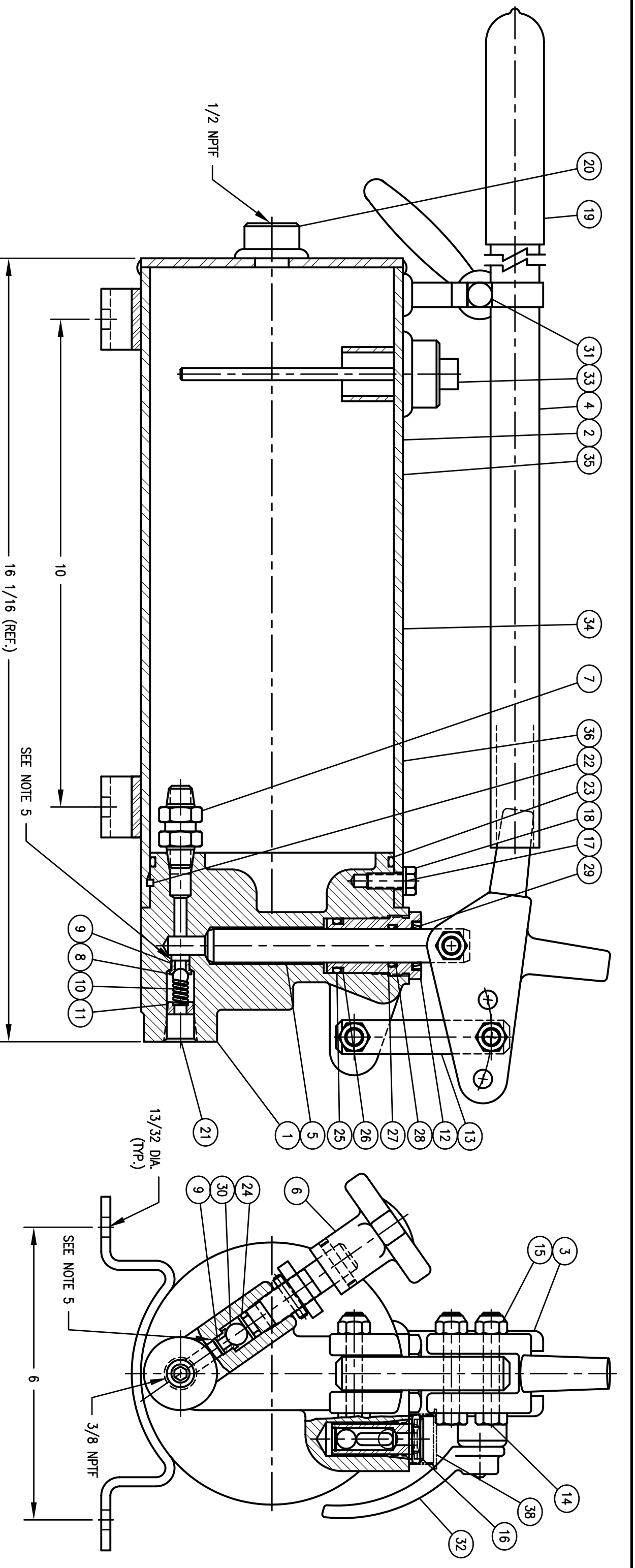


PRINCE MANUFACTURING CORPORATION
612 North Derby Lane, P.O. Box 7000
North Sioux City, South Dakota 57049-7000
www.princehyd.com

HAND PUMP ASSY

SIZE: B NEXT ASSY: N/A
SCALE: HALF MATERIAL: SEE DRAWING
SHT: 1 OF 1

ITEM	QTY.	PMC PART NO.	DESCRIPTION	ITEM	QTY.	PMC PART NO.	DESCRIPTION
1	1	090000121	HEAD (SEE NOTE 2)	22	230007501	SQ. RETAINING RING	
2	1	062100578	BUTT & TUBE ASSY	23	240000248	O-RING	
3	1	090000002	YOKE	24	240000110	O-RING	
4	1	050400123	HANDLE	25	240000212	O-RING	
5	1	010300003	PISTON	26	240019212	TEFLON BU-WASHER	
6	1	180901514	RELEASE VALVE ASSY	27	240000115	O-RING	
7	1	270002006	CHECK VALVE	28	240005115	BU-WASHER	
8	1	230009001	STEEL BALL-5/16 DIA.	29	250002115	WIPE	
9	2	200100013	VALVE SEAT	30	230009003	STEEL BALL-7/16 DIA	
10	1	230008003	OUTLET SPRING	31	170004150	SQ HD CAP SCREW	
11	1	200300003	PLUG	32	180901073	HANDLE NUT	
12	1	080600005	GLAND	33	180901068	DIP STICK	
13	1	190300026	LINKAGE PIN	34	230010379	DECAL	
14	1	170002089	HX, HD, CAP SCREW	35	230010610	DECAL	
15	3	220000203	LOCKNUT	36	230010685	DECAL	
16	1	270003020	BREATHER ASSY	37	230010700	INSTRUCTION SHEET-	
17	1	220001005	LOCKWASHER			PLACE INTO CARTON	
18	1	170002005	HX HD CAP SCREW			CAP-BREATHER	
19	1	230010331	HANDLE GRIP			HEAD ASSY-SEE NOTE 2	
20	1	200018003	PIPE PLUG-1/2NPTF				
21	1	200018002	PIPE PLUG-3/8 NPTF			PACKING KIT	



PRODUCT NOTES:

1. MAX. DESIGN & TEST PRESSURE: 3000 PSI
2. HEAD ASSY., P/N #090000122, AVAILABLE COMPLETE WITH INTERNAL PARTS AND PACKING.
3. RESERVOIR CAPACITY: 1 GALLON
4. TO USE HAND PUMP IN VERTICAL APPLICATION, INTERCHANGE BREATHER, ITEM 16, WITH PIPE PLUG, ITEM 20.
5. ASSEMBLE SEATS, ITEM 9, WITH LOCTITE #RC/680 APPLIED PER PMCC-1.
6. PAINT INSTRUCTIONS: RED PER PMS-00101.

GENERAL INFORMATION:

- A. UNLESS OTHERWISE SPECIFIED, THIS PRODUCT IS DESIGNED FOR USE WITH A GOOD QUALITY PETROLEUM BASED HYDRAULIC FLUID.
- B. THIS DRAWING IS THE PROPERTY OF PRINCE MFG. CORP., AND USE IN ANY MANNER DETRIMENTAL TO THE INTERESTS OF PRINCE MFG. CORP. IS PROHIBITED.

SM.	REVISION	DRAWN BY:	DV	DATE:	4/16/90
E	REDRAWN, NO CHANGE, ECN13646, 10/12/99 MOHR	CHECKED BY:	MOHR	DATE:	7/26/90
F	ITEM 6 WAS 180901085, ECN #14167, 4-6-00 MOHR	APPROVED BY:	JKW	DATE:	7/26/90
G	PACKING KIT WAS PMCK-PM-HP-10B; ECN-17065; 4-21-03 HV	TOLERANCES:	ALL NON-TOLERANCED DIMENSIONS ARE FOR REFERENCE USE ONLY		
H	P/N 230010685 WAS 230010324; ECN-17822; 6-11-04 HV	DEBURR & BREAK ALL EDGES DO NOT SCALE DRAWING	DIMENSIONS ARE IN INCHES OR [MILLIMETERS] UNLESS OTHERWISE SPECIFIED		
J	ADD ITEM 38, ECN 18380	SCALE:	HALF	MATERIAL:	

Prince
 PRINCE MANUFACTURING CORPORATION
 612 North Derby Lane, P.O. Box 7000
 North Sioux City, South Dakota 57049-7000
 www.princehyd.com

HAND PUMP ASSY

SIZE: **B** NEXT ASSY: **PM-HP-10B**
 SCALE: HALF MATERIAL: **302** SHT: 1 OF 1

ITEM	QTY.	PMC PART NO.	DESCRIPTION	ITEM	QTY.	PMC PART NO.	DESCRIPTION
1	1	090000121	HEAD (SEE NOTE 2)	22	230007501	SQ. RETAINING RING	
2	1	062100116	BUTT & TUBE ASSY	23	240000248	O-RING	
3	1	090000002	YOKE	24	240000110	O-RING	
4	1	050400123	HANDLE	25	240000212	O-RING	
5	1	010300003	PISTON	26	240019212	TEFLON BU-WASHER	
6	1	180901514	RELEASE VALVE ASSY	27	240000115	O-RING	
7	1	270002006	CHECK VALVE	28	240005115	BU-WASHER	
8	1	230009001	STEEL BALL-5/16 DIA.	29	250002115	WIPEP	
9	2	200100013	VALVE SEAT	30	230009003	STEEL BALL-7/16 DIA	
10	1	230008003	OUTLET SPRING	31	170004150	SQ HD CAP SCREW	
11	1	200300003	PLUG	32	180901073	HANDLE NUT	
12	1	080600005	GLAND	33	180901068	DIP STICK	
13	1	190300026	LINKAGE PIN	34	230010379	DECAL	
14	3	170002089	HX. HD. CAP SCREW	35	230010610	DECAL	
15	3	220000203	LOCKNUT	36	230010685	DECAL	
16	1	270003020	BREATHER ASSY	37	230010700	INSTRUCTION SHEET-	
17	1	220001005	LOCKWASHER			PLACE INTO CARTON	
18	1	170002005	HX HD CAP SCREW			CAP-BREATHER	
19	1	230010331	HANDLE GRIP	38	200013922	HEAD ASSY-SEE NOTE 2	
20	1	200018003	PIPE PLUG-1/2NPTF				
21	1	200018002	PIPE PLUG-3/8 NPTF			PACKING KIT	