



PUMPS

HAND PUMPS



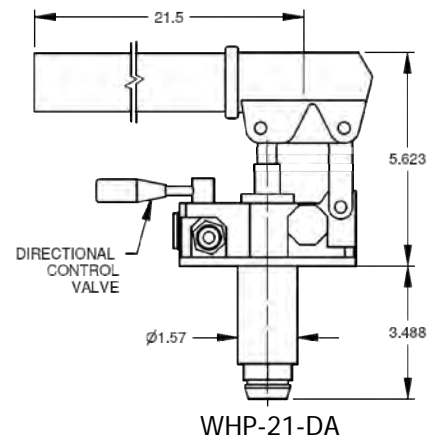
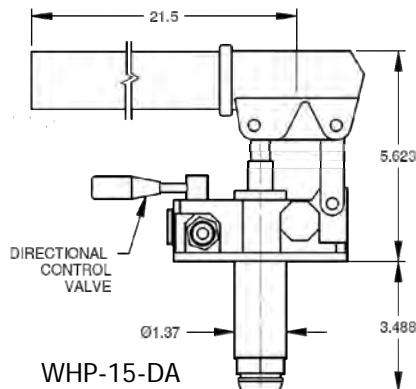
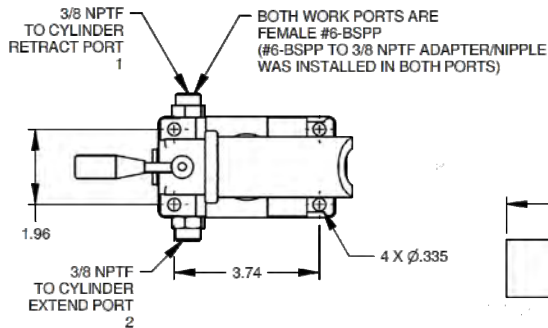
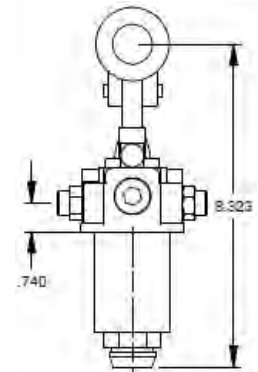
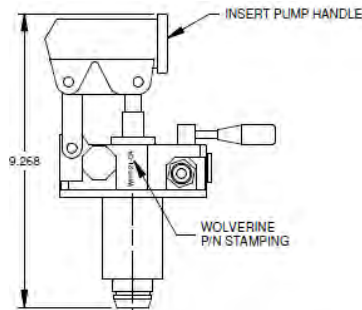
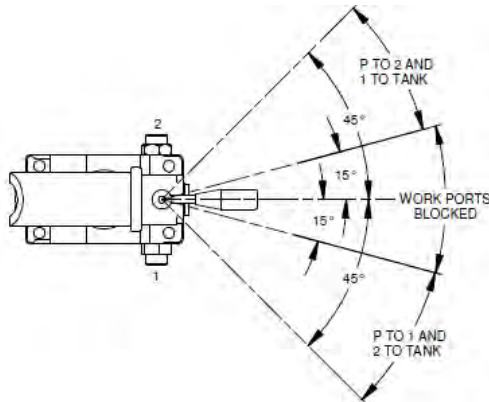
FEATURES:

- Up to 3500 PSI Working Pressure
- "SA" Series is Single Acting
- "DA" Series have a built in Directional Control Valve
- 1.5 and 2.1 Cubic Inch Per Cycle (one up and one down)



Model Hand Pumps – Double Acting Heads

| MODEL No. | DESCRIPTION | SHIPPING WEIGHT (pounds) | LIST PRICE |
|-----------|-----------------------------------|-----------------------------|---------------|
| WHP-15-DA | 1.5 CUBIC INCH DOUBLE ACTING HEAD | 10 | 195.00 |
| WHP-21-DA | 2.1 CUBIC INCH DOUBLE ACTING HEAD | 10 | 200.00 |
| 240040088 | HEAD / TANK SEAL KIT | 1 | 18.00 |
| 230009009 | ¼" DIA STEEL BALL VALVE SEAT | .001 | 5.00 |





PUMPS

HAND PUMPS



FEATURES:

- Steel tanks available in 0.8 and 1.3 gallon
- Aluminum tank available in 0.25 gallon
- Mounting brackets standard feature
- Steel tanks painted black

Model Hand Pump Tanks

| MODEL No. | DESCRIPTION | SHIPPING WEIGHT (pounds) | LIST PRICE |
|-----------|-----------------------------------|-----------------------------|------------|
| WHP-T-300 | STEEL TANK, 300 CU IN. 1.3 GAL | 7 | 78.00 |
| | | | |
| WHP-T-180 | STEEL TANK, 180 CU IN. 0.8 GAL | 5 | 60.00 |
| | | | |
| WHP-T-60 | ALUMINUM TANK, 60 CU IN. 0.25 GAL | 4 | 50.00 |
| | | | |