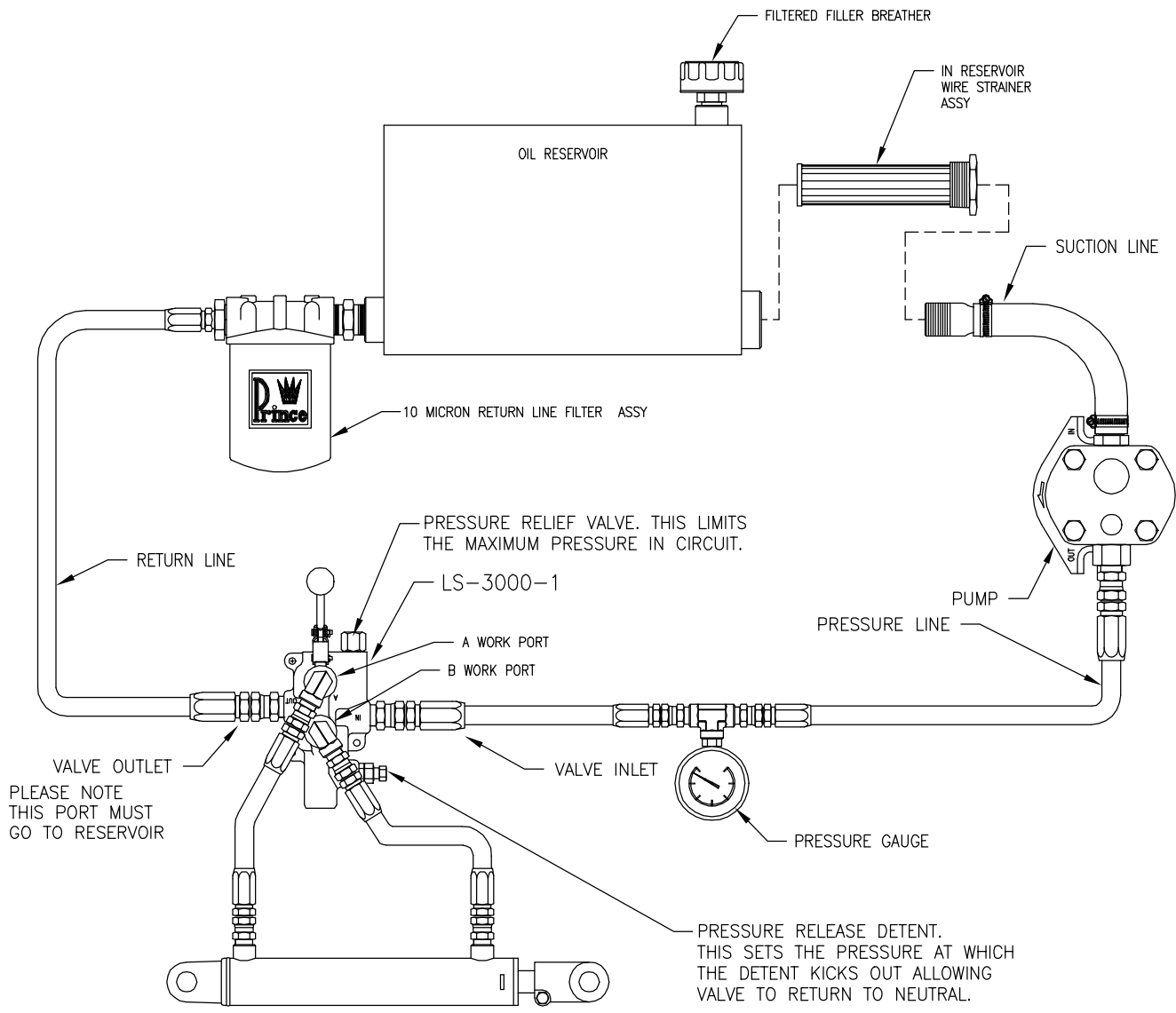


EXAMPLE LS3000 HYDRAULIC CIRCUIT



LS-3000 SPECIFICATIONS
 MAXIMUM OPERATING PRESSURE.....2750 PSI
 MAXIMUM TANK PRESSURE.....500 PSI
 MAXIMUM OPERATING TEMP.....180°F
 RECOMMENDED SYSTEM FILTRATION....10 MICRON
 FLOW RATING.....25 GPM MAX.
 WEIGHT.....10 LBS

