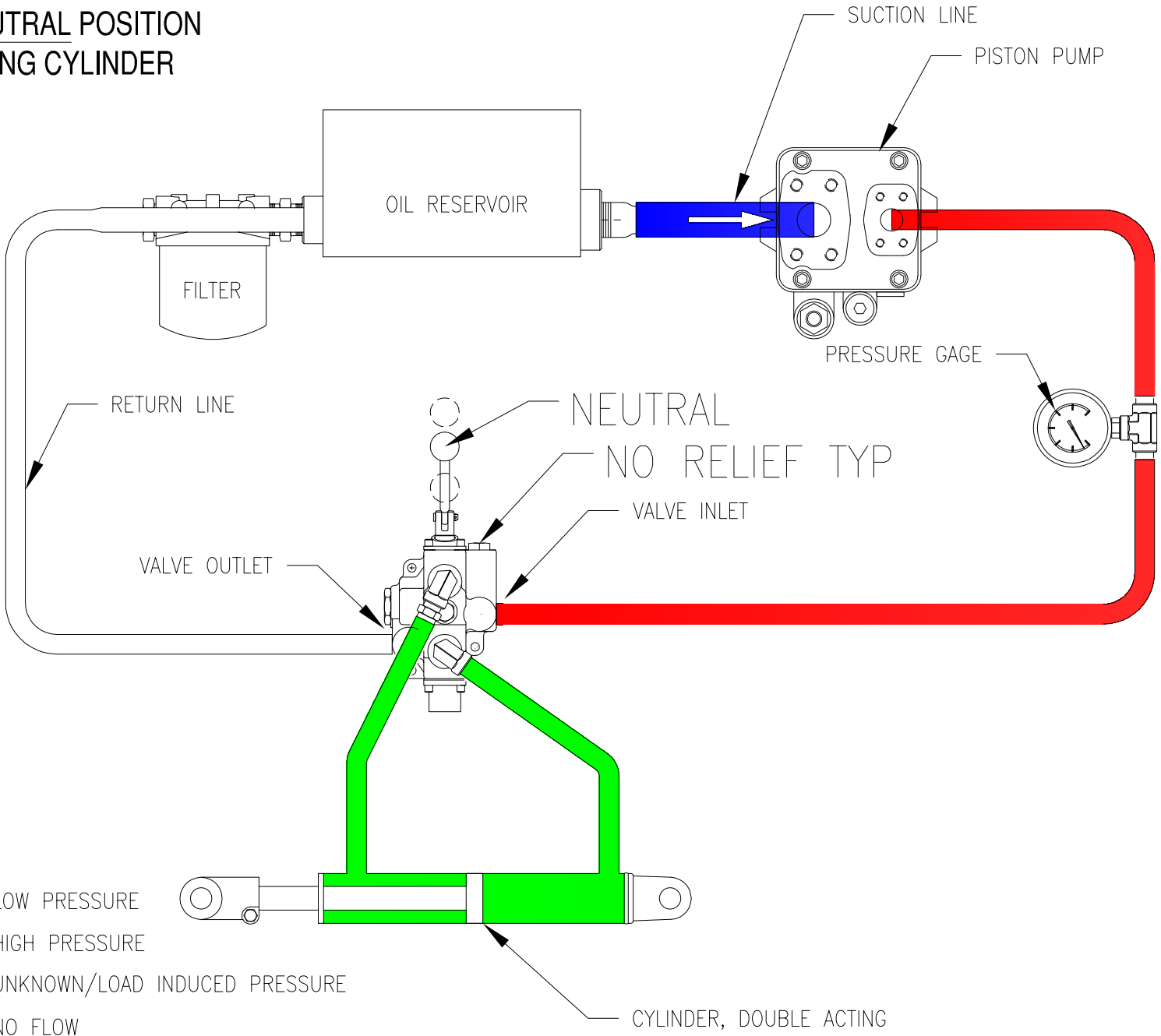
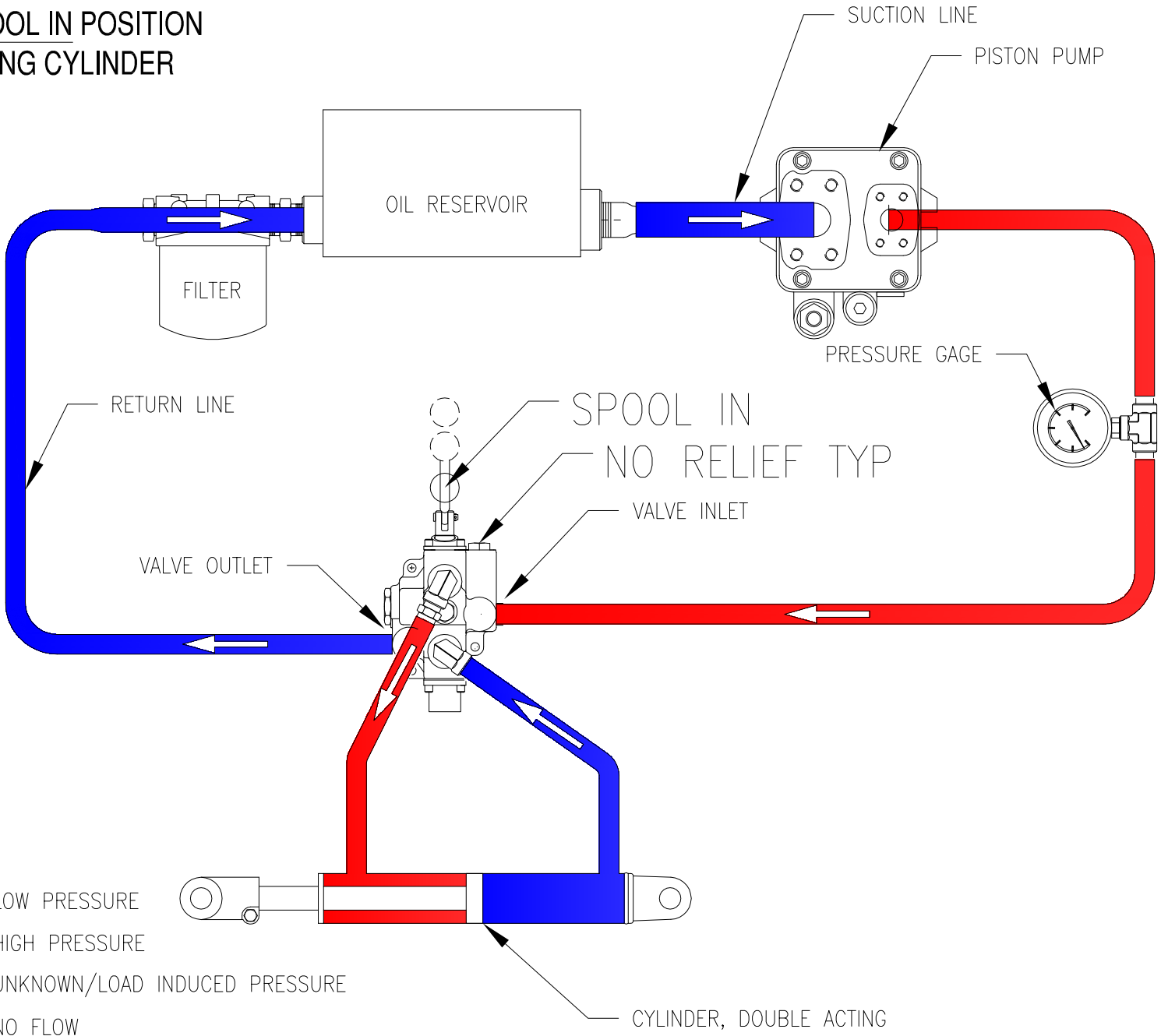


CLOSED CENTER HYDRAULIC SYSTEM
VALVE IN NEUTRAL POSITION
DOUBLE ACTING CYLINDER



- LOW PRESSURE
- HIGH PRESSURE
- UNKNOWN/LOAD INDUCED PRESSURE
- NO FLOW

**CLOSED CENTER HYDRAULIC SYSTEM
 VALVE IN SPOOL IN POSITION
 DOUBLE ACTING CYLINDER**



- LOW PRESSURE
- HIGH PRESSURE
- UNKNOWN/LOAD INDUCED PRESSURE
- NO FLOW