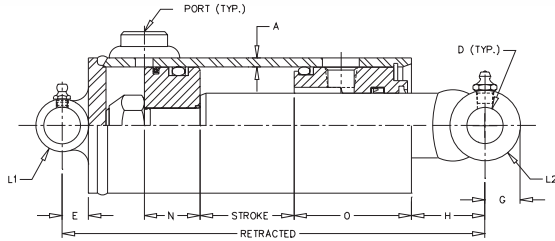
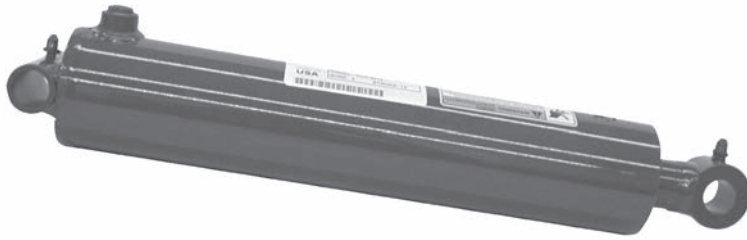




THE ROYAL LINE

2500 PSI

THE "ROYAL" Welded-DA-Heavy Duty-Universal Mountings



FEATURES:

- Double Acting
- Skived tubing
- Welded construction
- Chromed, ground & polished rod
- Ductile iron piston & gland
- Crosstube end fittings with grease zerks
- Urethane u-cup and urethane wiper in gland
- O-ring with backup washers & cast iron ring piston seals
- Truarc snap ring gland retainer
- Color is gloss black
- Rod seal is a urethane u-cup

Model No.	Style	Wt.	PSI	Column Load (Lbs)	Ret	Rod Dia.	A	PORTS NPTF	D	E	G	H	L1	L2	N	O
PMC-5408	2 1/2 X 8	17	2500	FULL PSI	16	1 3/8	3/16	3/8	.760	9/16	3/4	2 9/16	3	1 3/8	1 1/4	2 1/2
PMC-5412	2 1/2 X 12	20	2500	FULL PSI	20	1 3/8	3/16	3/8	.760	9/16	3/4	2 9/16	3	1 3/8	1 1/4	2 1/2
PMC-5414	2 1/2 X 14	22	2500	FULL PSI	22	1 3/8	3/16	3/8	.760	7/16	3/4	2 9/16	3	1 3/8	1 1/4	2 1/2
PMC-5416	2 1/2 X 16	23	2500	FULL PSI	24	1 3/8	3/16	3/8	.760	9/16	3/4	2 9/16	3	1 3/8	1 1/4	2 1/2
PMC-5420	2 1/2 X 20	27	2500	FULL PSI	28	1 3/8	3/16	3/8	.760	9/16	3/4	2 9/16	3	1 3/8	1 1/4	2 1/2
PMC-5424	2 1/2 X 24	30	2500	FULL PSI	32	1 3/8	3/16	3/8	.760	9/16	3/4	2 9/16	3	1 3/8	1 1/4	2 1/2
PMC-5430	2 1/2 X 30	35	2500	8,975 LBS	38	1 3/8	3/16	3/8	.760	9/16	3/4	2 9/16	3	1 3/8	1 1/4	2 1/2
PMC-5432	2 1/2 X 32	41	2500	8,000 LBS	40	1 3/8	3/16	3/8	.760	9/16	3/4	2 9/16	3	1 3/8	1 1/4	2 1/2
PMC-5436	2 1/2 X 36	44	2500	6,475 LBS	44	1 3/8	3/16	3/8	.760	9/16	3/4	2 9/16	3	1 3/8	1 1/4	2 1/2
PMC-5442	2 1/2 X 42	47	2500	4,870 LBS	50	1 3/8	3/16	3/8	.760	9/16	3/4	2 9/16	3	1 3/8	1 1/4	2 1/2
PMC-8308	3 X 8	22	2500	FULL PSI	16	1 1/2	3/16	1/2	1.015	11/16	1	2 5/16	3 1/2	1 1/2	1 1/4	2 5/8
PMC-8312	3 X 12	26	2500	FULL PSI	20	1 1/2	3/16	1/2	1.015	11/16	1	2 5/16	3 1/2	1 1/2	1 1/4	2 5/8
PMC-8314	3 X 14	29	2500	FULL PSI	22	1 1/2	3/16	1/2	1.015	11/16	1	2 5/16	3 1/2	1 1/2	1 1/4	2 5/8
PMC-8316	3 X 16	31	2500	FULL PSI	24	1 1/2	3/16	1/2	1.015	11/16	1	2 5/16	3 1/2	1 1/2	1 1/4	2 5/8
PMC-8320	3 X 20	35	2500	FULL PSI	28	1 1/2	3/16	1/2	1.015	11/16	1	2 5/16	3 1/2	1 1/2	1 1/4	2 5/8
PMC-8324	3 X 24	41	2500	FULL PSI	32	1 1/2	3/16	1/2	1.015	11/16	1	2 5/16	3 1/2	1 1/2	1 1/4	2 5/8
PMC-8330	3 X 30	46	2500	13,000 LBS	38	1 1/2	3/16	1/2	1.015	11/16	1	2 5/16	3 1/2	1 1/2	1 1/4	2 5/8
PMC-8332	3 X 32	48	2500	11,540 LBS	40	1 1/2	3/16	1/2	1.015	11/16	1	2 5/16	3 1/2	1 1/2	1 1/4	2 5/8
PMC-8336	3 X 36	52	2500	9,320 LBS	44	1 1/2	3/16	1/2	1.015	11/16	1	2 5/16	3 1/2	1 1/2	1 1/4	2 5/8
PMC-8340	3 X 40	56	2500	7,660 LBS	48	1 1/2	3/16	1/2	1.015	11/16	1	2 5/16	3 1/2	1 1/2	1 1/4	2 5/8
PMC-8342	3 X 42	59	2500	7,020 LBS	50	1 1/2	3/16	1/2	1.015	11/16	1	2 5/16	3 1/2	1 1/2	1 1/4	2 5/8
PMC-8348	3 X 48	65	2500	5,460 LBS	56	1 1/2	3/16	1/2	1.015	11/16	1	2 5/16	3 1/2	1 1/2	1 1/4	2 5/8
PMC-5508	3 1/2 X 8	26	2500	FULL PSI	16	1 1/2	3/16	1/2	1.015	11/16	1	1 11/16	4	1 1/2	1 1/2	2 5/8
PMC-5512	3 1/2 X 12	29	2500	FULL PSI	20	1 1/2	3/16	1/2	1.015	11/16	1	1 11/16	4	1 1/2	1 1/2	2 5/8
PMC-5514	3 1/2 X 14	32	2500	FULL PSI	22	1 1/2	3/16	1/2	1.015	11/16	1	1 11/16	4	1 1/2	1 1/2	2 5/8
PMC-5516	3 1/2 X 16	34	2500	FULL PSI	24	1 1/2	3/16	1/2	1.015	11/16	1	1 11/16	4	1 1/2	1 1/2	2 5/8
PMC-5520	3 1/2 X 20	38	2500	FULL PSI	28	1 1/2	3/16	1/2	1.015	11/16	1	1 11/16	4	1 1/2	1 1/2	2 5/8
PMC-5524	3 1/2 X 24	44	2500	20,210 LBS	32	1 1/2	3/16	1/2	1.015	11/16	1	1 11/16	4	1 1/2	1 1/2	2 5/8
PMC-5530	3 1/2 X 30	48	2500	13,540 LBS	38	1 1/2	3/16	1/2	1.015	11/16	1	1 11/16	4	1 1/2	1 1/2	2 5/8
PMC-5532	3 1/2 X 32	52	2500	12,040 LBS	40	1 1/2	3/16	1/2	1.015	11/16	1	1 11/16	4	1 1/2	1 1/2	2 5/8
PMC-5536	3 1/2 X 36	56	2500	9,700 LBS	44	1 1/2	3/16	1/2	1.015	11/16	1	1 11/16	4	1 1/2	1 1/2	2 5/8
PMC-5540	3 1/2 X 40	60	2500	7,975 LBS	48	1 1/2	3/16	1/2	1.015	11/16	1	1 11/16	4	1 1/2	1 1/2	2 5/8
PMC-5542	3 1/2 X 42	64	2500	7,300 LBS	50	1 1/2	3/16	1/2	1.015	11/16	1	1 11/16	4	1 1/2	1 1/2	2 5/8
PMC-5548	3 1/2 X 48	70	2500	5,680 LBS	56	1 1/2	3/16	1/2	1.015	11/16	1	1 11/16	4	1 1/2	1 1/2	2 5/8
PMC-5608	4 X 8	35	2500	FULL PSI	17	2	3/16	1/2	1.265	15/16	1 1/8	2 1/8	4 1/2	2	1 5/16	2 7/8
PMC-5612	4 X 12	41	2500	FULL PSI	21	2	3/16	1/2	1.265	15/16	1 1/8	2 1/8	4 1/2	2	1 5/16	2 7/8
PMC-5614	4 X 14	45	2500	FULL PSI	23	2	3/16	1/2	1.265	15/16	1 1/8	2 1/8	4 1/2	2	1 5/16	2 7/8
PMC-5616	4 X 16	48	2500	FULL PSI	25	2	3/16	1/2	1.265	15/16	1 1/8	2 1/8	4 1/2	2	1 5/16	2 7/8
PMC-5620	4 X 20	56	2500	FULL PSI	29	2	3/16	1/2	1.265	15/16	1 1/8	2 1/8	4 1/2	2	1 5/16	2 7/8
PMC-5624	4 X 24	62	2500	FULL PSI	33	2	3/16	1/2	1.265	15/16	1 1/8	2 1/8	4 1/2	2	1 5/16	2 7/8
PMC-5630	4 X 30	72	2500	FULL PSI	39	2	3/16	1/2	1.265	15/16	1 1/8	2 1/8	4 1/2	2	1 5/16	2 7/8
PMC-5632	4 X 32	74	2500	FULL PSI	41	2	3/16	1/2	1.265	15/16	1 1/8	2 1/8	4 1/2	2	1 5/16	2 7/8
PMC-5636	4 X 36	80	2500	28,710 LBS	45	2	3/16	1/2	1.265	15/16	1 1/8	2 1/8	4 1/2	2	1 5/16	2 7/8
PMC-5640	4 X 40	85	2500	23,700 LBS	49	2	3/16	1/2	1.265	15/16	1 1/8	2 1/8	4 1/2	2	1 5/16	2 7/8
PMC-5642	4 X 42	92	2500	21,680 LBS	51	2	3/16	1/2	1.265	15/16	1 1/8	2 1/8	4 1/2	2	1 5/16	2 7/8
PMC-5648	4 X 48	100	2500	16,930 LBS	57	2	3/16	1/2	1.265	15/16	1 1/8	2 1/8	4 1/2	2	1 5/16	2 7/8
PMC-5660	4 X 60	120	2500	11,160 LBS	69	2	3/16	1/2	1.265	15/16	1 1/8	2 1/8	4 1/2	2	1 5/16	2 7/8

NOTE: If disassembly is necessary - Be sure to put a wire or "O" Ring in snap ring groove so when the piston is pulled out - The cast iron ring will not catch in groove