



THE GLADIATOR LINE

3000 PSI EXTENDED DUTY

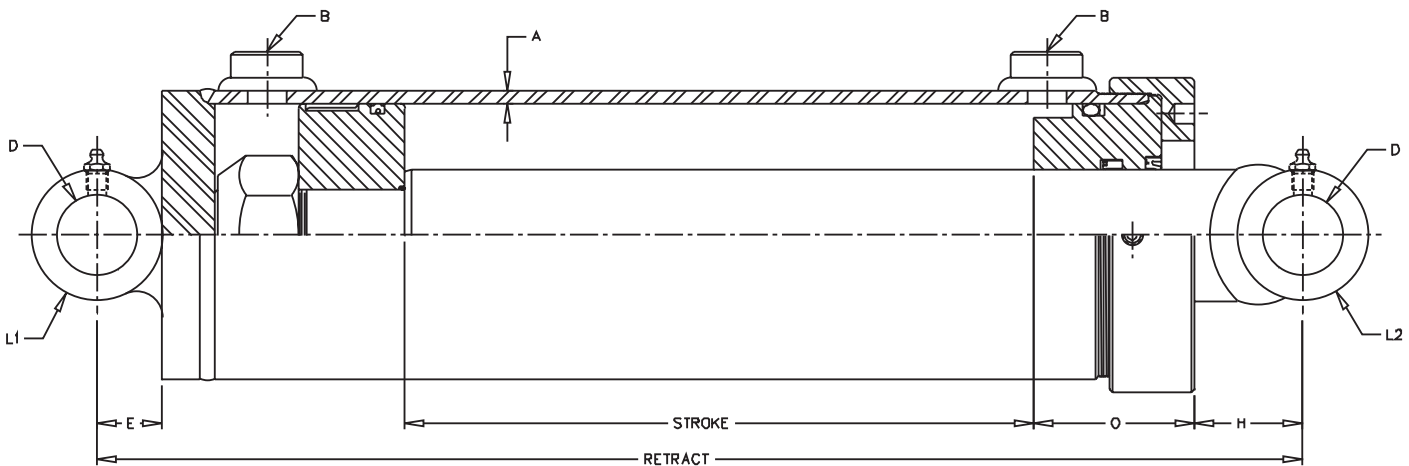
THE "GLADIATOR" Welded-DA-Heavy Duty-3000 PSI



FEATURES:

- Heavy duty welded construction
- Externally threaded gland cap
- Chromed, ground, and polished piston rod
- Skived tubing
- Ductile iron piston
- Urethane u-cup, metal encased wiper, polyurethane crown seal and wear ring
- Crosstube end fittings with grease zerks
- Color is gloss black

* Spacer included in these models



Rods are sized for a maximum safe push load (2:1 safety factor) given in the table. This is based on the pin configuration shown with no center support.

Model No.	Style	Wt.	PSI	Column Load (Lbs.)	Retract	Rod Dia.	A	B SAE	D	E	H	L1	O	L2
SAE-21008	5 x 8	75	3000	FULL PSI	19"	2 1/2	1/4	#12	1.515	1 1/4	2 1/16	5 3/4	3 1/8	4"
SAE-21012	5 x 12	85	3000	FULL PSI	23"	2 1/2	1/4	#12	1.515	1 1/4	2 1/16	5 3/4	3 1/8	4"
SAE-21016	5 x 16	90	3000	FULL PSI	27"	2 1/2	1/4	#12	1.515	1 1/4	2 1/16	5 3/4	3 1/8	4"
SAE-21020	5 x 20	105	3000	FULL PSI	31"	2 1/2	1/4	#12	1.515	1 1/4	2 1/16	5 3/4	3 1/8	4"
SAE-21024	5 x 24	115	3000	FULL PSI	35"	2 1/2	1/4	#12	1.515	1 1/4	2 1/16	5 3/4	3 1/8	4"
SAE-21030	5 x 30	130	3000	FULL PSI	41"	2 1/2	1/4	#12	1.515	1 1/4	2 1/16	5 3/4	3 1/8	4"
SAE-21036	5 x 36	145	3000	FULL PSI	47"	2 1/2	1/4	#12	1.515	1 1/4	2 1/16	5 3/4	3 1/8	4"
SAE-21048*	5 x 48	180	3000	39,125 LBS	61"	2 1/2	1/4	#12	1.515	1 1/4	2 1/16	5 3/4	3 1/8	4"
SAE-21054*	5 x 54	195	3000	31,150 LBS	68"	2 1/2	1/4	#12	1.515	1 1/4	2 1/16	5 3/4	3 1/8	4"
SAE-21060*	5 x 60	215	3000	25,360 LBS	75"	2 1/2	1/4	#12	1.515	1 1/4	2 1/16	5 3/4	3 1/8	4"
SAE-22008	6 x 8	100	3000	FULL PSI	19"	3	1/4	#12	1.515	1 1/4	2 1/16	6 3/4	3 1/16	4"
SAE-22012	6 x 12	110	3000	FULL PSI	23"	3	1/4	#12	1.515	1 1/4	2 1/16	6 3/4	3 1/16	4"
SAE-22016	6 x 16	125	3000	FULL PSI	27"	3	1/4	#12	1.515	1 1/4	2 1/16	6 3/4	3 1/16	4"
SAE-22024	6 x 24	150	3000	FULL PSI	35"	3	1/4	#12	1.515	1 1/4	2 1/16	6 3/4	3 1/16	4"
SAE-22030	6 x 30	170	3000	FULL PSI	41"	3	1/4	#12	1.515	1 1/4	2 1/16	6 3/4	3 1/16	4"
SAE-22036	6 x 36	190	3000	FULL PSI	47"	3	1/4	#12	1.515	1 1/4	2 1/16	6 3/4	3 1/16	4"
SAE-22048*	6 x 48	240	3000	79,700 LBS	61"	3	1/4	#12	1.515	1 1/4	2 1/16	6 3/4	3 1/16	4"
SAE-22054*	6 x 54	265	3000	63,400 LBS	68"	3	1/4	#12	1.515	1 1/4	2 1/16	6 3/4	3 1/16	4"
SAE-22060*	6 x 60	290	3000	51,700 LBS	75"	3	1/4	#12	1.515	1 1/4	2 1/16	6 3/4	3 1/16	4"