



THE FORTRESS LINE

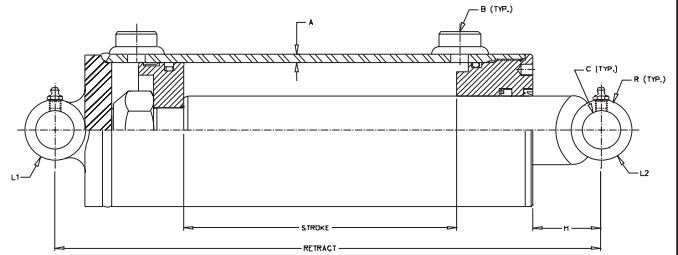
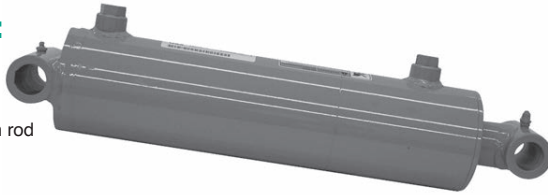
3000 PSI EXTENDED DUTY

CYLINDERS AND ACCESSORIES

THE "FORTRESS" Welded-DA-Heavy Duty-3000 PSI

FEATURES:

- Heavy duty welded construction
- Chromed, ground, and polished piston rod
- Skived tubing
- Ductile iron piston
- Thread-in ductile iron gland
- Urethane u-cup, metal encased wiper, teflon cap seal and wear ring
- Crosstube end fittings with grease zerks
- Color is gloss black
- Matches closed length of Royal line cylinders (up to 42" stroke)
- Spacers included in these models



Rods are sized for a maximum safe push load (2:1 safety factor) given in the table. This is based on the pin configuration shown with no center support.

Model No.	Style	Wt	PSI	Column Load (Lbs)	Ret	Rod Dia.	A	B	C	R	H	L1	L2
SAE-62506	2 1/2 X 6	25	3000	FULL PSI	14	1 3/8	3/16	#8 SAE	0.765	5/8	2 1/2	3 1/4	2 1/4
SAE-62508	2 1/2 X 8	27	3000	FULL PSI	16	1 3/8	3/16	#8 SAE	0.765	5/8	2 1/2	3 1/4	2 1/4
SAE-62510	2 1/2 X 10	29	3000	FULL PSI	18	1 3/8	3/16	#8 SAE	0.765	5/8	2 1/2	3 1/4	2 1/4
SAE-62512	2 1/2 X 12	30	3000	FULL PSI	20	1 3/8	3/16	#8 SAE	0.765	5/8	2 1/2	3 1/4	2 1/4
SAE-62514	2 1/2 X 14	32	3000	FULL PSI	22	1 3/8	3/16	#8 SAE	0.765	5/8	2 1/2	3 1/4	2 1/4
SAE-62516	2 1/2 X 16	34	3000	FULL PSI	24	1 3/8	3/16	#8 SAE	0.765	5/8	2 1/2	3 1/4	2 1/4
SAE-62518	2 1/2 X 18	36	3000	FULL PSI	26	1 3/8	3/16	#8 SAE	0.765	5/8	2 1/2	3 1/4	2 1/4
SAE-62520	2 1/2 X 20	37	3000	FULL PSI	28	1 3/8	3/16	#8 SAE	0.765	5/8	2 1/2	3 1/4	2 1/4
SAE-62524	2 1/2 X 24	41	3000	FULL PSI	32	1 3/8	3/16	#8 SAE	0.765	5/8	2 1/2	3 1/4	2 1/4
SAE-62530	2 1/2 X 30	46	3000	8,975 LBS	38	1 3/8	3/16	#8 SAE	0.765	5/8	2 1/2	3 1/4	2 1/4
SAE-62532	2 1/2 X 32	48	3000	8,000 LBS	40	1 3/8	3/16	#8 SAE	0.765	5/8	2 1/2	3 1/4	2 1/4
SAE-62536	2 1/2 X 36	51	3000	6,475 LBS	44	1 3/8	3/16	#8 SAE	0.765	5/8	2 1/2	3 1/4	2 1/4
SAE-62540	2 1/2 X 40	55	3000	5,330 LBS	48	1 3/8	3/16	#8 SAE	0.765	5/8	2 1/2	3 1/4	2 1/4
SAE-62542	2 1/2 X 42	57	3000	4,870 LBS	50	1 3/8	3/16	#8 SAE	0.765	5/8	2 1/2	3 1/4	2 1/4
SAE-63006	3 X 6	30	3000	FULL PSI	14	1 1/2	3/16	#8 SAE	1.015	13/16	2	3 3/4	2 3/4
SAE-63008	3 X 8	32	3000	FULL PSI	16	1 1/2	3/16	#8 SAE	1.015	13/16	2	3 3/4	2 3/4
SAE-63010	3 X 10	34	3000	FULL PSI	18	1 1/2	3/16	#8 SAE	1.015	13/16	2	3 3/4	2 3/4
SAE-63012	3 X 12	37	3000	FULL PSI	20	1 1/2	3/16	#8 SAE	1.015	13/16	2	3 3/4	2 3/4
SAE-63014	3 X 14	39	3000	FULL PSI	22	1 1/2	3/16	#8 SAE	1.015	13/16	2	3 3/4	2 3/4
SAE-63016	3 X 16	41	3000	FULL PSI	24	1 1/2	3/16	#8 SAE	1.015	13/16	2	3 3/4	2 3/4
SAE-63018	3 X 18	43	3000	FULL PSI	26	1 1/2	3/16	#8 SAE	1.015	13/16	2	3 3/4	2 3/4
SAE-63020	3 X 20	45	3000	FULL PSI	28	1 1/2	3/16	#8 SAE	1.015	13/16	2	3 3/4	2 3/4
SAE-63024	3 X 24	49	3000	FULL PSI	32	1 1/2	3/16	#8 SAE	1.015	13/16	2	3 3/4	2 3/4
SAE-63030	3 X 30	55	3000	13,540 LBS	38	1 1/2	3/16	#8 SAE	1.015	13/16	2	3 3/4	2 3/4
SAE-63032	3 X 32	57	3000	12,040 LBS	40	1 1/2	3/16	#8 SAE	1.015	13/16	2	3 3/4	2 3/4
SAE-63036	3 X 36	61	3000	9,700 LBS	44	1 1/2	3/16	#8 SAE	1.015	13/16	2	3 3/4	2 3/4
SAE-63040	3 X 40	66	3000	7,975 LBS	48	1 1/2	3/16	#8 SAE	1.015	13/16	2	3 3/4	2 3/4
SAE-63042	3 X 42	68	3000	7,300 LBS	50	1 1/2	3/16	#8 SAE	1.015	13/16	2	3 3/4	2 3/4
SAE-63048*	3 X 48	75	3000	3,480 LBS	58	1 1/2	3/16	#8 SAE	1.015	13/16	2	3 3/4	2 3/4
SAE-63506	3 1/2 X 6	25	3000	FULL PSI	14	1 3/4	3/16	#8 SAE	1.015	13/16	1 7/8	4 1/4	2 3/4
SAE-63508	3 1/2 X 8	27	3000	FULL PSI	16	1 3/4	3/16	#8 SAE	1.015	13/16	1 7/8	4 1/4	2 3/4
SAE-63510	3 1/2 X 10	30	3000	FULL PSI	18	1 3/4	3/16	#8 SAE	1.015	13/16	1 7/8	4 1/4	2 3/4
SAE-63512	3 1/2 X 12	33	3000	FULL PSI	20	1 3/4	3/16	#8 SAE	1.015	13/16	1 7/8	4 1/4	2 3/4
SAE-63514	3 1/2 X 14	35	3000	FULL PSI	22	1 3/4	3/16	#8 SAE	1.015	13/16	1 7/8	4 1/4	2 3/4
SAE-63516	3 1/2 X 16	38	3000	FULL PSI	24	1 3/4	3/16	#8 SAE	1.015	13/16	1 7/8	4 1/4	2 3/4
SAE-63518	3 1/2 X 18	40	3000	FULL PSI	26	1 3/4	3/16	#8 SAE	1.015	13/16	1 7/8	4 1/4	2 3/4
SAE-63520	3 1/2 X 20	43	3000	FULL PSI	28	1 3/4	3/16	#8 SAE	1.015	13/16	1 7/8	4 1/4	2 3/4
SAE-63524	3 1/2 X 24	48	3000	FULL PSI	32	1 3/4	3/16	#8 SAE	1.015	13/16	1 7/8	4 1/4	2 3/4
SAE-63530	3 1/2 X 30	56	3000	24,360 LBS	38	1 3/4	3/16	#8 SAE	1.015	13/16	1 7/8	4 1/4	2 3/4
SAE-63532	3 1/2 X 32	59	3000	21,670 LBS	40	1 3/4	3/16	#8 SAE	1.015	13/16	1 7/8	4 1/4	2 3/4
SAE-63536	3 1/2 X 36	64	3000	17,470 LBS	44	1 3/4	3/16	#8 SAE	1.015	13/16	1 7/8	4 1/4	2 3/4
SAE-63540	3 1/2 X 40	69	3000	14,380 LBS	48	1 3/4	3/16	#8 SAE	1.015	13/16	1 7/8	4 1/4	2 3/4
SAE-63542	3 1/2 X 42	72	3000	13,140 LBS	50	1 3/4	3/16	#8 SAE	1.015	13/16	1 7/8	4 1/4	2 3/4
SAE-63548*	3 1/2 X 48	80	3000	9,900 LBS	58	1 3/4	3/16	#8 SAE	1.015	13/16	1 7/8	4 1/4	2 3/4
SAE-64008	4 X 8	42	3000	FULL PSI	17	2	7/32	#10 SAE	1.265	1	2 1/4	4 3/4	3 1/4
SAE-64012	4 X 12	48	3000	FULL PSI	21	2	7/32	#10 SAE	1.265	1	2 1/4	4 3/4	3 1/4
SAE-64016	4 X 16	55	3000	FULL PSI	25	2	7/32	#10 SAE	1.265	1	2 1/4	4 3/4	3 1/4
SAE-64020	4 X 20	62	3000	FULL PSI	29	2	7/32	#10 SAE	1.265	1	2 1/4	4 3/4	3 1/4
SAE-64024	4 X 24	69	3000	FULL PSI	33	2	7/32	#10 SAE	1.265	1	2 1/4	4 3/4	3 1/4
SAE-64030	4 X 30	79	3000	FULL PSI	39	2	7/32	#10 SAE	1.265	1	2 1/4	4 3/4	3 1/4
SAE-64032	4 X 32	83	3000	FULL PSI	41	2	7/32	#10 SAE	1.265	1	2 1/4	4 3/4	3 1/4
SAE-64036	4 X 36	90	3000	28,710 LBS	45	2	7/32	#10 SAE	1.265	1	2 1/4	4 3/4	3 1/4
SAE-64040	4 X 40	96	3000	23,700 LBS	49	2	7/32	#10 SAE	1.265	1	2 1/4	4 3/4	3 1/4
SAE-64042	4 X 42	100	3000	21,680 LBS	51	2	7/32	#10 SAE	1.265	1	2 1/4	4 3/4	3 1/4
SAE-64048*	4 X 48	115	3000	16,640 LBS	59	2	7/32	#10 SAE	1.265	1	2 1/4	4 3/4	3 1/4
SAE-64060*	4 X 60	138	3000	10,890 LBS	73	2	7/32	#10 SAE	1.265	1	2 1/4	4 3/4	3 1/4
SAE-64508	4 1/2 X 8	54	3000	FULL PSI	17	2 1/4	1/4	#10 SAE	1.265	1	2 1/4	5 1/4	3 1/4
SAE-64512	4 1/2 X 12	62	3000	FULL PSI	21	2 1/4	1/4	#10 SAE	1.265	1	2 1/4	5 1/4	3 1/4
SAE-64516	4 1/2 X 16	71	3000	FULL PSI	25	2 1/4	1/4	#10 SAE	1.265	1	2 1/4	5 1/4	3 1/4
SAE-64520	4 1/2 X 20	80	3000	FULL PSI	29	2 1/4	1/4	#10 SAE	1.265	1	2 1/4	5 1/4	3 1/4
SAE-64524	4 1/2 X 24	89	3000	FULL PSI	33	2 1/4	1/4	#10 SAE	1.265	1	2 1/4	5 1/4	3 1/4
SAE-64530	4 1/2 X 30	104	3000	FULL PSI	39	2 1/4	1/4	#10 SAE	1.265	1	2 1/4	5 1/4	3 1/4
SAE-64532	4 1/2 X 32	106	3000	FULL PSI	41	2 1/4	1/4	#10 SAE	1.265	1	2 1/4	5 1/4	3 1/4
SAE-64536	4 1/2 X 36	115	3000	46,860 LBS	45	2 1/4	1/4	#10 SAE	1.265	1	2 1/4	5 1/4	3 1/4
SAE-64540	4 1/2 X 40	124	3000	38,650 LBS	49	2 1/4	1/4	#10 SAE	1.265	1	2 1/4	5 1/4	3 1/4
SAE-64542	4 1/2 X 42	128	3000	35,330 LBS	51	2 1/4	1/4	#10 SAE	1.265	1	2 1/4	5 1/4	3 1/4
SAE-64548*	4 1/2 X 48	147	3000	26,690 LBS	59	2 1/4	1/4	#10 SAE	1.265	1	2 1/4	5 1/4	3 1/4
SAE-64560*	4 1/2 X 60	177	3000	17,210 LBS	73	2 1/4	1/4	#10 SAE	1.265	1	2 1/4	5 1/4	3 1/4