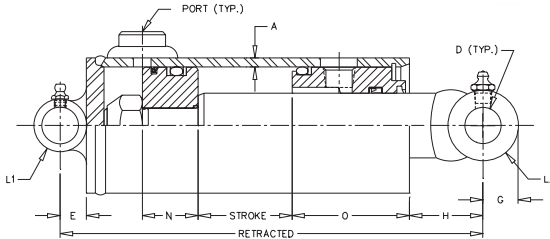
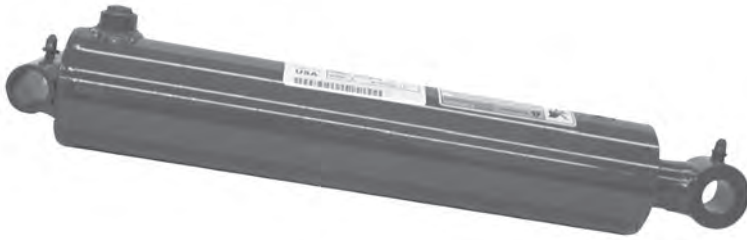


THE "ROYAL" Welded-DA-Heavy Duty-Universal Mountings



FEATURES:

- Double Acting
- Honed tubing
- Welded construction
- Chromed, ground & polished rod
- Ductile iron piston & gland
- Crosstube end fittings with grease zerks
- Urethane u-cup and urethane wiper in gland
- O-ring with backup washers & cast iron ring piston seals
- Truarc snap ring gland retainer
- Standard color is black
- Rod seal is a urethane u-cup

| Model No. | Style | Wt. | PSI | Column Load (Lbs) | Ret | Rod Dia. | A | PORTS NPTF | D | E | G | H | L1 | L2 | N | O |
|-----------|------------|-----|------|-------------------|-----|----------|------|------------|-------|-------|-------|---------|-------|-------|--------|-------|
| PMC-5408 | 2 1/2 X 8 | 17 | 2500 | FULL PSI | 16 | 1 3/8 | 3/16 | 3/8 | .760 | 9/16 | 3/4 | 2 9/16 | 3 | 1 3/8 | 1 1/4 | 2 1/2 |
| PMC-5412 | 2 1/2 X 12 | 20 | 2500 | FULL PSI | 20 | 1 3/8 | 3/16 | 3/8 | .760 | 9/16 | 3/4 | 2 9/16 | 3 | 1 3/8 | 1 1/4 | 2 1/2 |
| PMC-5414 | 2 1/2 X 14 | 22 | 2500 | FULL PSI | 22 | 1 3/8 | 3/16 | 3/8 | .760 | 7/16 | 3/4 | 2 9/16 | 3 | 1 3/8 | 1 1/4 | 2 1/2 |
| PMC-5416 | 2 1/2 X 16 | 23 | 2500 | FULL PSI | 24 | 1 3/8 | 3/16 | 3/8 | .760 | 9/16 | 3/4 | 2 9/16 | 3 | 1 3/8 | 1 1/4 | 2 1/2 |
| PMC-5420 | 2 1/2 X 20 | 27 | 2500 | FULL PSI | 28 | 1 3/8 | 3/16 | 3/8 | .760 | 9/16 | 3/4 | 2 9/16 | 3 | 1 3/8 | 1 1/4 | 2 1/2 |
| PMC-5424 | 2 1/2 X 24 | 30 | 2500 | FULL PSI | 32 | 1 3/8 | 3/16 | 3/8 | .760 | 9/16 | 3/4 | 2 9/16 | 3 | 1 3/8 | 1 1/4 | 2 1/2 |
| PMC-5430 | 2 1/2 X 30 | 35 | 2500 | 8,975 LBS | 38 | 1 3/8 | 3/16 | 3/8 | .760 | 9/16 | 3/4 | 2 9/16 | 3 | 1 3/8 | 1 1/4 | 2 1/2 |
| PMC-5432 | 2 1/2 X 32 | 41 | 2500 | 8,000 LBS | 40 | 1 3/8 | 3/16 | 3/8 | .760 | 9/16 | 3/4 | 2 9/16 | 3 | 1 3/8 | 1 1/4 | 2 1/2 |
| PMC-5436 | 2 1/2 X 36 | 44 | 2500 | 6,475 LBS | 44 | 1 3/8 | 3/16 | 3/8 | .760 | 9/16 | 3/4 | 2 9/16 | 3 | 1 3/8 | 1 1/4 | 2 1/2 |
| PMC-5442 | 2 1/2 X 42 | 47 | 2500 | 4,870 LBS | 50 | 1 3/8 | 3/16 | 3/8 | .760 | 9/16 | 3/4 | 2 9/16 | 3 | 1 3/8 | 1 1/4 | 2 1/2 |
| PMC-8308 | 3 X 8 | 22 | 2500 | FULL PSI | 16 | 1 1/2 | 3/16 | 1/2 | 1.015 | 11/16 | 1 | 2 5/16 | 3 1/2 | 1 1/2 | 1 1/4 | 2 5/8 |
| PMC-8312 | 3 X 12 | 26 | 2500 | FULL PSI | 20 | 1 1/2 | 3/16 | 1/2 | 1.015 | 11/16 | 1 | 2 5/16 | 3 1/2 | 1 1/2 | 1 1/4 | 2 5/8 |
| PMC-8314 | 3 X 14 | 29 | 2500 | FULL PSI | 22 | 1 1/2 | 3/16 | 1/2 | 1.015 | 11/16 | 1 | 2 5/16 | 3 1/2 | 1 1/2 | 1 1/4 | 2 5/8 |
| PMC-8316 | 3 X 16 | 31 | 2500 | FULL PSI | 24 | 1 1/2 | 3/16 | 1/2 | 1.015 | 11/16 | 1 | 2 5/16 | 3 1/2 | 1 1/2 | 1 1/4 | 2 5/8 |
| PMC-8320 | 3 X 20 | 35 | 2500 | FULL PSI | 28 | 1 1/2 | 3/16 | 1/2 | 1.015 | 11/16 | 1 | 2 5/16 | 3 1/2 | 1 1/2 | 1 1/4 | 2 5/8 |
| PMC-8324 | 3 X 24 | 41 | 2500 | FULL PSI | 32 | 1 1/2 | 3/16 | 1/2 | 1.015 | 11/16 | 1 | 2 5/16 | 3 1/2 | 1 1/2 | 1 1/4 | 2 5/8 |
| PMC-8330 | 3 X 30 | 46 | 2500 | 13,000 LBS | 38 | 1 1/2 | 3/16 | 1/2 | 1.015 | 11/16 | 1 | 2 5/16 | 3 1/2 | 1 1/2 | 1 1/4 | 2 5/8 |
| PMC-8332 | 3 X 32 | 48 | 2500 | 11,540 LBS | 40 | 1 1/2 | 3/16 | 1/2 | 1.015 | 11/16 | 1 | 2 5/16 | 3 1/2 | 1 1/2 | 1 1/4 | 2 5/8 |
| PMC-8336 | 3 X 36 | 52 | 2500 | 9,320 LBS | 44 | 1 1/2 | 3/16 | 1/2 | 1.015 | 11/16 | 1 | 2 5/16 | 3 1/2 | 1 1/2 | 1 1/4 | 2 5/8 |
| PMC-8340 | 3 X 40 | 56 | 2500 | 7,660 LBS | 48 | 1 1/2 | 3/16 | 1/2 | 1.015 | 11/16 | 1 | 2 5/16 | 3 1/2 | 1 1/2 | 1 1/4 | 2 5/8 |
| PMC-8342 | 3 X 42 | 59 | 2500 | 7,020 LBS | 50 | 1 1/2 | 3/16 | 1/2 | 1.015 | 11/16 | 1 | 2 5/16 | 3 1/2 | 1 1/2 | 1 1/4 | 2 5/8 |
| PMC-8348 | 3 X 48 | 65 | 2500 | 5,460 LBS | 56 | 1 1/2 | 3/16 | 1/2 | 1.015 | 11/16 | 1 | 2 5/16 | 3 1/2 | 1 1/2 | 1 1/4 | 2 5/8 |
| PMC-5508 | 3 1/2 X 8 | 26 | 2500 | FULL PSI | 16 | 1 1/2 | 3/16 | 1/2 | 1.015 | 11/16 | 1 | 1 11/16 | 4 | 1 1/2 | 1 1/2 | 2 5/8 |
| PMC-5512 | 3 1/2 X 12 | 29 | 2500 | FULL PSI | 20 | 1 1/2 | 3/16 | 1/2 | 1.015 | 11/16 | 1 | 1 11/16 | 4 | 1 1/2 | 1 1/2 | 2 5/8 |
| PMC-5514 | 3 1/2 X 14 | 32 | 2500 | FULL PSI | 22 | 1 1/2 | 3/16 | 1/2 | 1.015 | 11/16 | 1 | 1 11/16 | 4 | 1 1/2 | 1 1/2 | 2 5/8 |
| PMC-5516 | 3 1/2 X 16 | 34 | 2500 | FULL PSI | 24 | 1 1/2 | 3/16 | 1/2 | 1.015 | 11/16 | 1 | 1 11/16 | 4 | 1 1/2 | 1 1/2 | 2 5/8 |
| PMC-5520 | 3 1/2 X 20 | 38 | 2500 | FULL PSI | 28 | 1 1/2 | 3/16 | 1/2 | 1.015 | 11/16 | 1 | 1 11/16 | 4 | 1 1/2 | 1 1/2 | 2 5/8 |
| PMC-5524 | 3 1/2 X 24 | 44 | 2500 | 20,210 LBS | 32 | 1 1/2 | 3/16 | 1/2 | 1.015 | 11/16 | 1 | 1 11/16 | 4 | 1 1/2 | 1 1/2 | 2 5/8 |
| PMC-5530 | 3 1/2 X 30 | 48 | 2500 | 13,540 LBS | 38 | 1 1/2 | 3/16 | 1/2 | 1.015 | 11/16 | 1 | 1 11/16 | 4 | 1 1/2 | 1 1/2 | 2 5/8 |
| PMC-5532 | 3 1/2 X 32 | 52 | 2500 | 12,040 LBS | 40 | 1 1/2 | 3/16 | 1/2 | 1.015 | 11/16 | 1 | 1 11/16 | 4 | 1 1/2 | 1 1/2 | 2 5/8 |
| PMC-5536 | 3 1/2 X 36 | 56 | 2500 | 9,700 LBS | 44 | 1 1/2 | 3/16 | 1/2 | 1.015 | 11/16 | 1 | 1 11/16 | 4 | 1 1/2 | 1 1/2 | 2 5/8 |
| PMC-5540 | 3 1/2 X 40 | 60 | 2500 | 7,975 LBS | 48 | 1 1/2 | 3/16 | 1/2 | 1.015 | 11/16 | 1 | 1 11/16 | 4 | 1 1/2 | 1 1/2 | 2 5/8 |
| PMC-5542 | 3 1/2 X 42 | 64 | 2500 | 7,300 LBS | 50 | 1 1/2 | 3/16 | 1/2 | 1.015 | 11/16 | 1 | 1 11/16 | 4 | 1 1/2 | 1 1/2 | 2 5/8 |
| PMC-5548 | 3 1/2 X 48 | 70 | 2500 | 5,680 LBS | 56 | 1 1/2 | 3/16 | 1/2 | 1.015 | 11/16 | 1 | 1 11/16 | 4 | 1 1/2 | 1 1/2 | 2 5/8 |
| PMC-5608 | 4 X 8 | 35 | 2500 | FULL PSI | 17 | 2 | 3/16 | 1/2 | 1.265 | 15/16 | 1 1/8 | 2 1/8 | 4 1/2 | 2 | 1 5/16 | 2 7/8 |
| PMC-5612 | 4 X 12 | 41 | 2500 | FULL PSI | 21 | 2 | 3/16 | 1/2 | 1.265 | 15/16 | 1 1/8 | 2 1/8 | 4 1/2 | 2 | 1 5/16 | 2 7/8 |
| PMC-5614 | 4 X 14 | 45 | 2500 | FULL PSI | 23 | 2 | 3/16 | 1/2 | 1.265 | 15/16 | 1 1/8 | 2 1/8 | 4 1/2 | 2 | 1 5/16 | 2 7/8 |
| PMC-5616 | 4 X 16 | 48 | 2500 | FULL PSI | 25 | 2 | 3/16 | 1/2 | 1.265 | 15/16 | 1 1/8 | 2 1/8 | 4 1/2 | 2 | 1 5/16 | 2 7/8 |
| PMC-5620 | 4 X 20 | 56 | 2500 | FULL PSI | 29 | 2 | 3/16 | 1/2 | 1.265 | 15/16 | 1 1/8 | 2 1/8 | 4 1/2 | 2 | 1 5/16 | 2 7/8 |
| PMC-5624 | 4 X 24 | 62 | 2500 | FULL PSI | 33 | 2 | 3/16 | 1/2 | 1.265 | 15/16 | 1 1/8 | 2 1/8 | 4 1/2 | 2 | 1 5/16 | 2 7/8 |
| PMC-5630 | 4 X 30 | 72 | 2500 | FULL PSI | 39 | 2 | 3/16 | 1/2 | 1.265 | 15/16 | 1 1/8 | 2 1/8 | 4 1/2 | 2 | 1 5/16 | 2 7/8 |
| PMC-5632 | 4 X 32 | 74 | 2500 | FULL PSI | 41 | 2 | 3/16 | 1/2 | 1.265 | 15/16 | 1 1/8 | 2 1/8 | 4 1/2 | 2 | 1 5/16 | 2 7/8 |
| PMC-5636 | 4 X 36 | 80 | 2500 | 28,710 LBS | 45 | 2 | 3/16 | 1/2 | 1.265 | 15/16 | 1 1/8 | 2 1/8 | 4 1/2 | 2 | 1 5/16 | 2 7/8 |
| PMC-5640 | 4 X 40 | 85 | 2500 | 23,700 LBS | 49 | 2 | 3/16 | 1/2 | 1.265 | 15/16 | 1 1/8 | 2 1/8 | 4 1/2 | 2 | 1 5/16 | 2 7/8 |
| PMC-5642 | 4 X 42 | 92 | 2500 | 21,680 LBS | 51 | 2 | 3/16 | 1/2 | 1.265 | 15/16 | 1 1/8 | 2 1/8 | 4 1/2 | 2 | 1 5/16 | 2 7/8 |
| PMC-5648 | 4 X 48 | 100 | 2500 | 16,930 LBS | 57 | 2 | 3/16 | 1/2 | 1.265 | 15/16 | 1 1/8 | 2 1/8 | 4 1/2 | 2 | 1 5/16 | 2 7/8 |
| PMC-5660 | 4 X 60 | 120 | 2500 | 11,160 LBS | 69 | 2 | 3/16 | 1/2 | 1.265 | 15/16 | 1 1/8 | 2 1/8 | 4 1/2 | 2 | 1 5/16 | 2 7/8 |

NOTE: If disassembly is necessary - Be sure to put a wire or "O" Ring in snap ring groove so when the piston is pulled out - The cast iron ring will not catch in groove