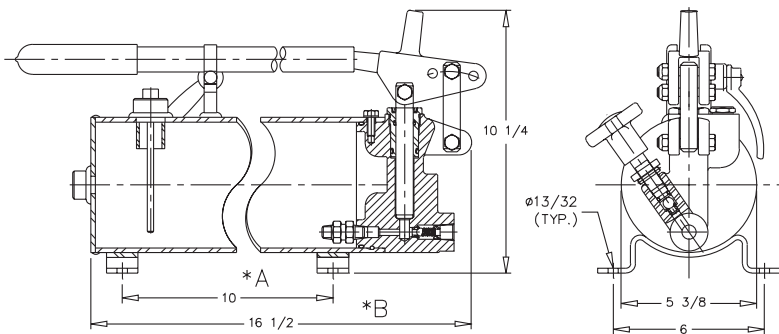




# PRINCE HAND PUMP



MODEL	WT.	RESERVOIR SIZE
PM-HP-30B	55 lbs.	3 Gallons
PM-HP-20B	42 lbs.	2 Gallons
PM-HP-15B	35 lbs.	1 1/2 Gallon
PM-HP-10BR	30 lbs.	1 Gallon (Vertical head up mount)
PM-HP-10B	30 lbs.	1 Gallon
PM-HP-5BR	27 lbs.	1/2 Gallon (Vertical head up mount)
PM-HP-5B	27 lbs.	1/2 Gallon

Used for 1000-3000 PSI

	A	B
PM-HP-30B	36 1/4	42 5/16
PM-HP-20B	23 1/8	29 3/16
PM-HP-15B	16 9/16	22 5/8
PM-HP-10BR	10	16 1/2
PM-HP-10B	10	16 1/2
PM-HP-5BR	3 7/16	9 15/16
PM-HP-5B	3 7/16	9 15/16



## FEATURES

The Prince Hand Pump offers definite advantages over similar components of higher cost. The pump has unique design features which insure versatility. The handle can be used in (2) positions. The pump can be mounted vertically and horizontally. There are (3) different volume and pressure settings.

Position 1: 1.25 cu. in. per stroke—1500 psi\*

Position 2: .95 cu. in. per stroke—2000 psi\*

Position 3: .60 cu. in. per stroke—3000 psi\*

\*At applied force of 60-65 lbs. on handle. (Pressure to 6,000 psi can be developed with more force)

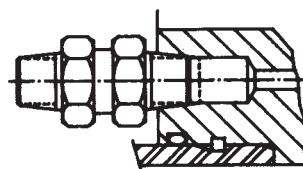
## APPLICATIONS

This hand pump is designed for use wherever hydraulic pressure is needed without large flow requirements. Its sturdy design and positive sealing features will provide excellent service with a minimum of care. Uses range from mobile equipment to shop presses. Recommended temperatures may range from -40°F to 300°F. Most general purpose hydraulic oils can be used.

## HYDRAULIC CYLINDER APPLICATIONS

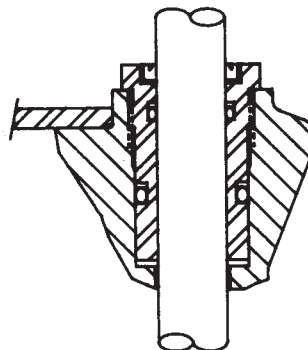
This pump is designed for use with single acting cylinders. It may be used with double acting cylinders provided a two-way hand valve is used to direct the flow and a return port is installed on the reservoir.

## FEATURES



### REPLACEABLE INLET CHECK VALVE

Zero leakage check valve assembly can be easily replaced when necessary.



### REMOVABLE PACKING GLAND

Packing gland seals can be easily replaced when necessary. Gland is removable with standard tools. New seals are readily available.

## SPECIFICATIONS

PISTON .....	11/16" dia. Chromed & Ground Steel
PRESSURE SEALS ...	O-ring & Hytrel Back-up Washers
HANDLE .....	Extra—heavy Pipe, 14 3/4" long
HANDLE POSITION .....	Selective — two-position
PORT SIZE .....	3/8 NPTF
RESERVOIR .....	Steel Tubing
MOUNTING FIXTURES .....	4-Bolt Foot Mount for 3/8 Bolts
MOUNTING .....	Horizontal or vertical
FLOAT CHECK .....	Prevent oil from sloshing out
DIPSTICK .....	To check oil level
HANDLE CARRIER .....	To prevent losing handle