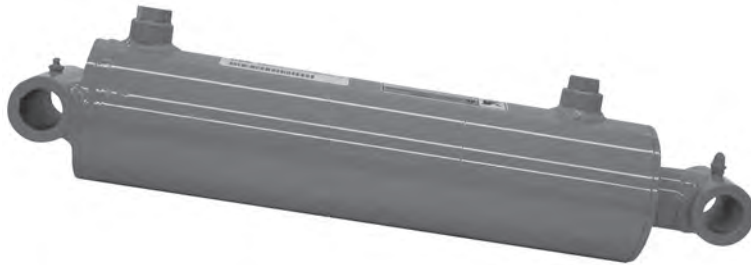




8 INCH BORE WELDED CYLINDER

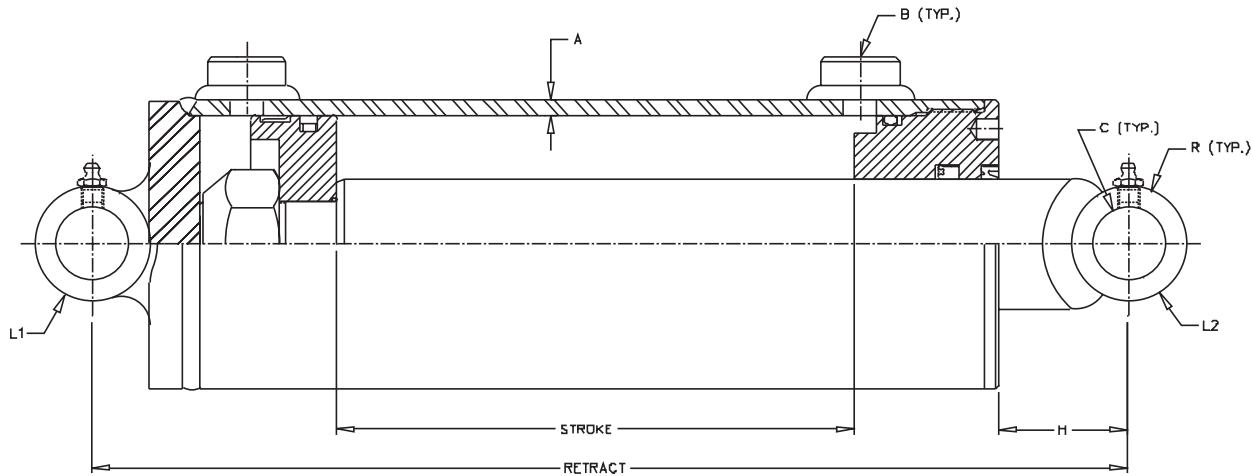
3000 PSI STANDARD DUTY

8 INCH BORE Welded-Double Acting-3000 PSI



FEATURES:

- Welded construction
- Chromed, ground, and polished piston rod
- Skived tubing
- Ductile iron piston & thread-in Ductile iron gland
- Teflon cap seal & wear ring on piston
- Urethane u-cup, metal encased wiper, & wear ring on piston rod
- Crosstube end fittings with grease zerks
- Painted: Gloss black
- 3000 PSI maximum operating pressure
- 3000 PSI maximum peak spike pressure



Rods are sized for a maximum safe push load (2:1 safety factor) given in the table. This is based on the pin configuration shown with no center support. Recommended pin material 100,000 PSI minimum yield strength

| Model No. | Style | Wt | PSI | Column Load (Lbs) | Ret | Rod Dia. | A | B | C | R | H | L1 | L2 |
|------------|--------|-----|------|-------------------|-----|----------|-----|---------|-------|---|---|----|----|
| SAE-68008 | 8 x 8 | 250 | 3000 | Full PSI | 24 | 4 | .38 | #16 SAE | 2.515 | 4 | 3 | 9 | 5 |
| SAE-68012 | 8 x 12 | 275 | 3000 | Full PSI | 28 | 4 | .38 | #16 SAE | 2.515 | 4 | 3 | 9 | 5 |
| SAE-68016 | 8 x 16 | 300 | 3000 | Full PSI | 32 | 4 | .38 | #16 SAE | 2.515 | 4 | 3 | 9 | 5 |
| SAE-68020 | 8 x 20 | 325 | 3000 | Full PSI | 36 | 4 | .38 | #16 SAE | 2.515 | 4 | 3 | 9 | 5 |
| SAE-68024 | 8 x 24 | 350 | 3000 | Full PSI | 40 | 4 | .38 | #16 SAE | 2.515 | 4 | 3 | 9 | 5 |
| SAE-68030 | 8 x 30 | 385 | 3000 | Full PSI | 46 | 4 | .38 | #16 SAE | 2.515 | 4 | 3 | 9 | 5 |
| SAE-68036 | 8 x 36 | 425 | 3000 | Full PSI | 52 | 4 | .38 | #16 SAE | 2.515 | 4 | 3 | 9 | 5 |
| SAE-68048* | 8 x 48 | 500 | 3000 | Full PSI | 66 | 4 | .38 | #16 SAE | 2.515 | 4 | 3 | 9 | 5 |
| SAE-68054* | 8 x 54 | 540 | 3000 | Full PSI | 73 | 4 | .38 | #16 SAE | 2.515 | 4 | 3 | 9 | 5 |
| SAE-68060* | 8 x 60 | 580 | 3000 | Full PSI | 80 | 4 | .38 | #16 SAE | 2.515 | 4 | 3 | 9 | 5 |

Application Note:

This Prince standard cylinder is designed for standard duty applications. It is not appropriate for applications that experience high shock loads, high spike pressures, high side loads, or have a high duty cycle. This product is not intended for use on personnel lift or crane applications. Consult your sales representative for cylinders designed to meet these applications.

Note: * Spacers included in these models