

REMOTE CABLE CONTROL JOYSTICK INSTALLATION FOR PMC VALVES USED WITH FRONT END LOADERS

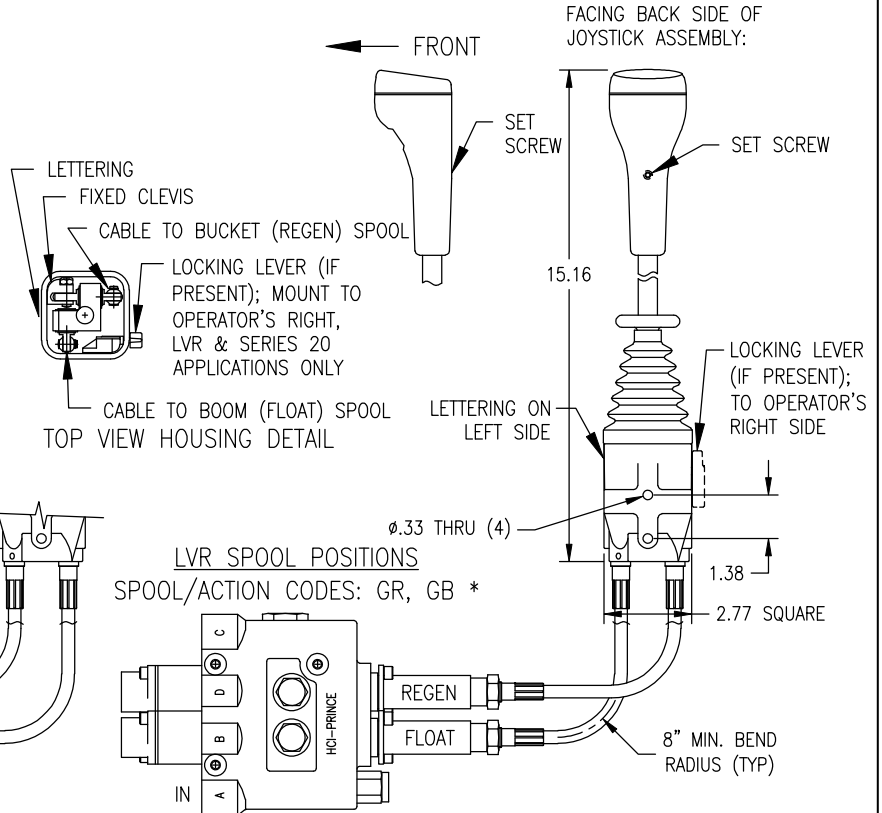
ALL MODELS: To maintain the proper handle function & pattern, the cables must be connected to the joystick and valve spools as shown. The joystick housing must be mounted with the lock lever (if present, or side w/three holes) oriented as shown, relative to the operator's position. Confirm that hoses and cables are connected correctly for proper bucket & boom operation before use.

HANDLE: If required, loosen the setscrew found in the rear side of the handle until handle can be moved freely. Orient handle as shown, relative to the housing. Tighten setscrew to hold the handle in position.

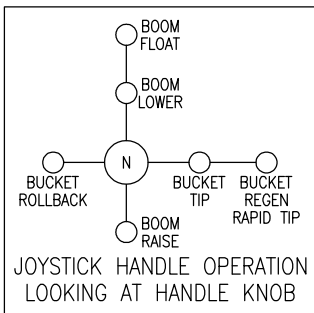
"SERIES 20" MODELS: Orient handle as shown with the locking lever (if present) to the right, lettering to the left. Connect the cable labeled "to boom spool" to the float (boom) section of a stack valve. Connect the cable labeled "to bucket spool" to the bucket section of the stack valve.

* **"BB" SPOOL/ACTION:** LVR/LVT models having "BB" spool/action may use either joystick orientation depending on how the hoses are connected in the application.

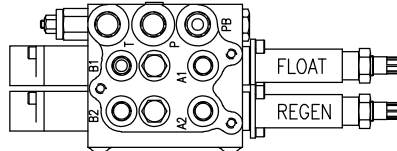
LVR & SERIES 20 MODELS:



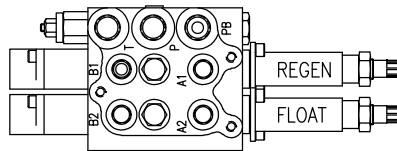
LVS, LVT, SV & RD5200 MODELS:



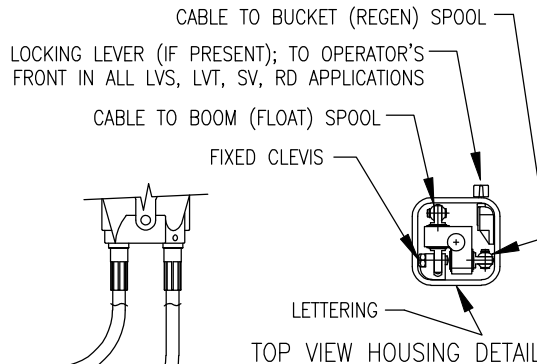
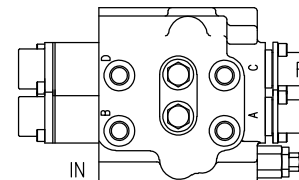
LVT SPOOL POSITIONS
 SPOOL/ACTION CODES: GR, GB *
 MODELS USING C-689 CASTING



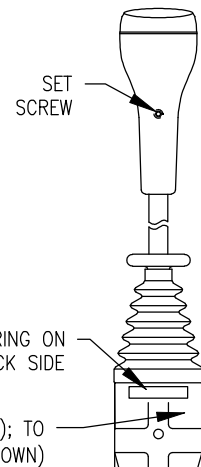
LVT SPOOL POSITIONS:
 SPOOL/ACTION CODES: RG, BG *
 MODELS USING C-714 CASTING



LVS SPOOL POSITIONS



FACING BACK SIDE OF JOYSTICK ASSEMBLY:



'SV' & 'RD5200' MODELS:

Orient the housing and handle as shown with the locking lever (if present, or side with three holes) toward the operator's front and lettering to the rear. Connect the cable labeled "To Boom Spool" to the 1st spool (A-B) of an RD5200, or to the float (boom) section's spool of a stack valve. Connect the cable labeled "To Bucket Spool" to the 2nd spool (C-D) of an RD5200, or to the bucket section's spool of a stack valve.

REMOTE CABLE CONTROL JOYSTICK INSTALLATION FOR PMC VALVES USED WITH FRONT END LOADERS

REMOTE CABLE CONTROL

Heavy duty remote cable controls are available for most Prince directional control valves. The compact controller bodies are of die-cast metal construction and are available in either dual axis or single axis configurations. Dual axis joysticks are constructed with steel swivels and anti-wear bushings. The high strength flexible control cables are jacketed and have quick attach connections.

REMOTE CONTROLLERS

	Prince Part No.
Dual Axis Joystick with lock	660170038
Dual Axis Joystick with lock & single normally open momentary switch	660170041
Single Axis Joystick	660170039

CONTROL CABLES

49 inches long (1.25 M)	660171125
59 inches long (1.50 M)	660171150
79 inches long (2.00 M)	660171200
98 inches long (2.50 M)	660171250

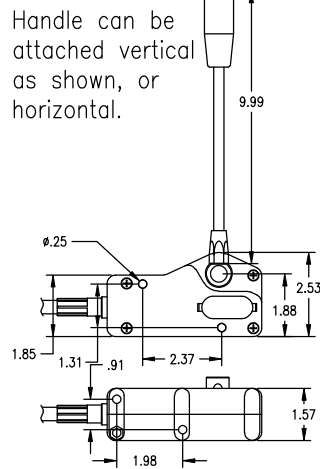
VALVE CONNECTION KITS

RD5000 series kit*	660170037
LVS kit (Series loader valve)**	660170029
LVR or LVT kit (Rear or Top ported loader valve)**	660170029
SV stack valve or RD4100 kit***	660170031
Series 20 stack valve kit****	660170035

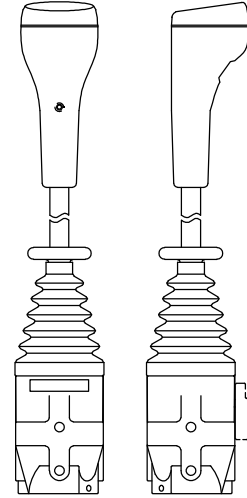
Note: One control cable and one connection kit is required for each spool controlled. Order the remote controller, the control cables and the connection kits as necessary to complete the remote cable control assembly.

- * Field convertible or order option 3, less handle assembly.
- ** Order loader valve handle option 8, tang end only.
- *** Field convertible from standard handle or order option 6, clevis spool end only.
- **** Field convertible or order option 3, less complete handle.

SINGLE SPOOL CONTROLLER



DUAL AXIS CONTROLLER (LVT, RD5000 orientation shown)



DUAL AXIS CONTROLLER WITH SWITCH (LVT, RD5000 orientation shown)

