

'DS' DOUBLE SELECTOR VALVE

The PRINCE valve model DS is a manual 6-way 2 position double selector valve. This valve will divert the flow going to two separate hydraulic circuits. For example two double acting cylinders or two reversible hydraulic motors can be operated by one four-way valve. When the double selector spool is pushed in, the C and D ports (top ports) are connected to the A and E ports (right ports). When the selector spool is pulled out, the C and D ports are connected to the B and F ports (left ports). An optional series/parallel spool is also available. This spool will run two reversible hydraulic motors in series when the spool is out and in parallel when the spool is pushed in.

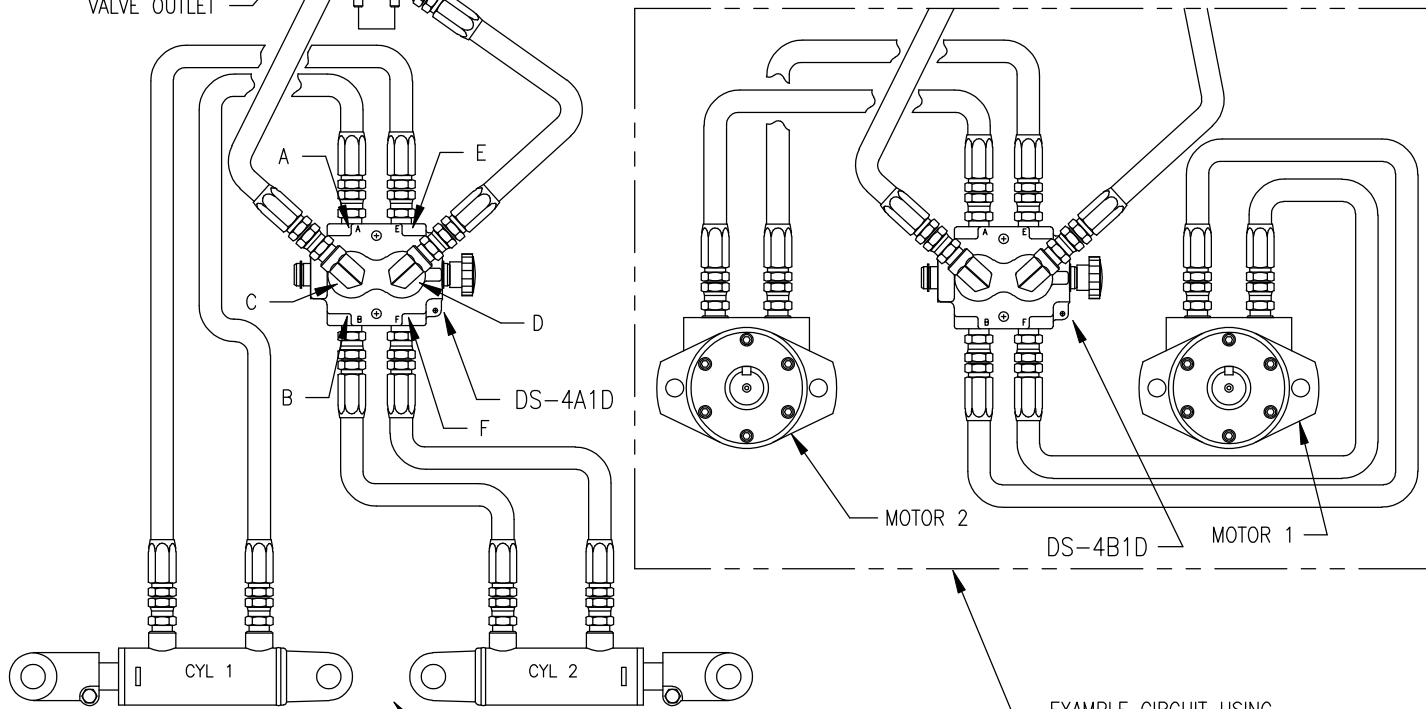
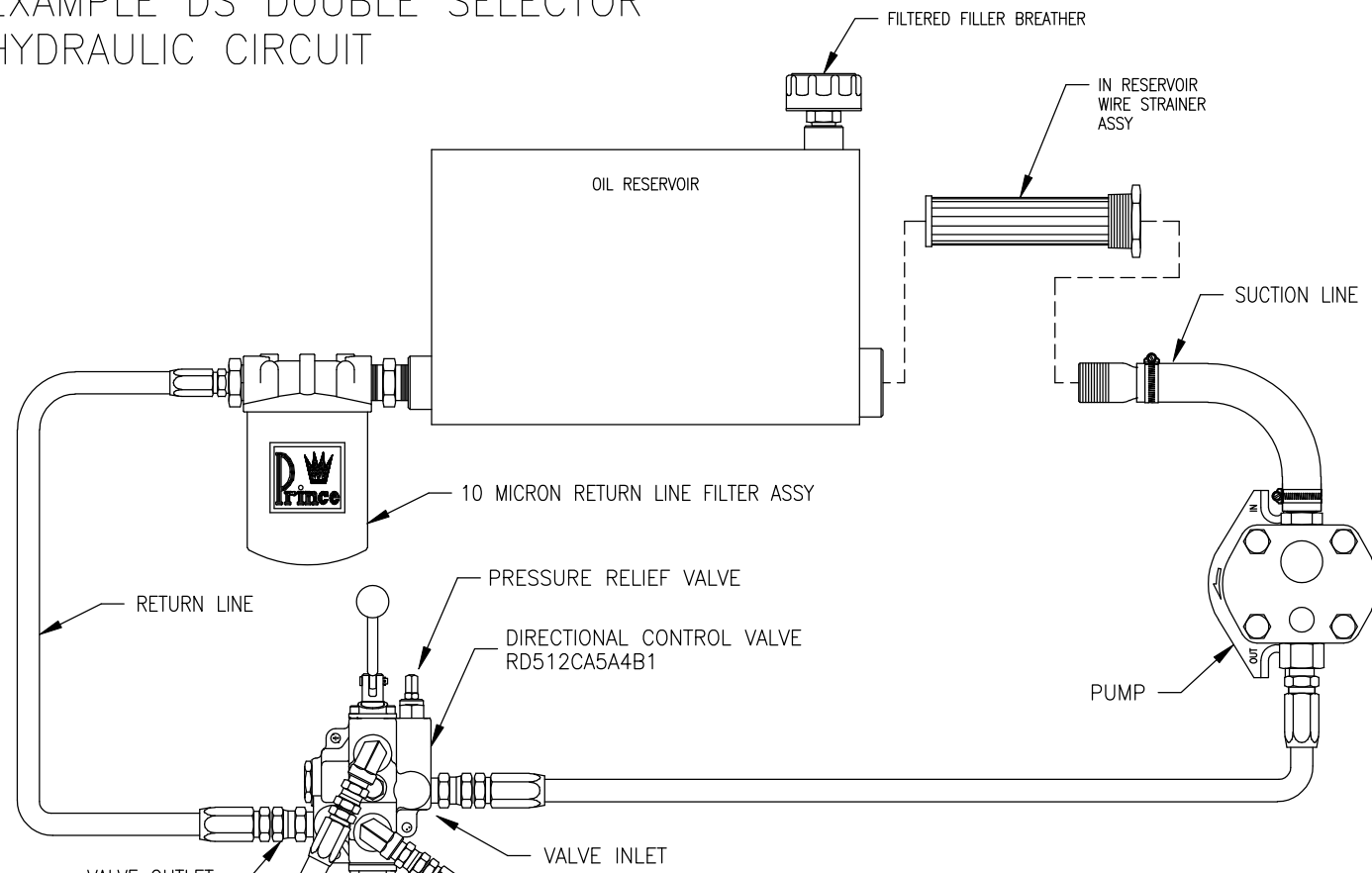
DS KITS	
PART NO.	DESCRIPTION
660590005	SEAL KIT
660170001	LEVER HANDLE KIT
660170003	SPRING OFFSET KIT
660170004	2 POSITION DETENT KIT
660170010	END CAP KIT
670400029	KNOB
230017018	SNAP RING
671400059	CLEVIS

ANSI SYMBOL
SELECTOR SPOOL

CIRCUIT SELECTOR CIRCUIT SELECTOR SERIES/PARALLEL

REVISION B, ECN-18645 12/06/05 REVISION C, ECN-22119 8/01/13

EXAMPLE DS DOUBLE SELECTOR HYDRAULIC CIRCUIT



EXAMPLE CIRCUIT USING SELECTOR SPOOL, OPTION 'A'. PUSH SPOOL IN TO SELECT CYLINDER 1. PULL SPOOL OUT TO SELECT CYLINDER 2.

EXAMPLE CIRCUIT USING SERIES/PARALLEL SPOOL, OPTION 'B'. PUSH SPOOL IN FOR PARALLEL OPERATION, AND PULL SPOOL OUT FOR SERIES OPERATION OF MOTORS.

NOTE: THREAD SEALANT—
USE OF A QUALITY NON-TEFLON THREAD SEALANT IS RECOMMENDED FOR TAPERED PIPE THREADS.
(USE OF TEFLON TAPE IS NOT RECOMMENDED.)