

# PRINCE MANUFACTURING CORPORATION

P.O. BOX 7000 N. SIOUX CITY, S.D. 57049

PHONE: (605) 235-1220

FAX: (605)235-1082



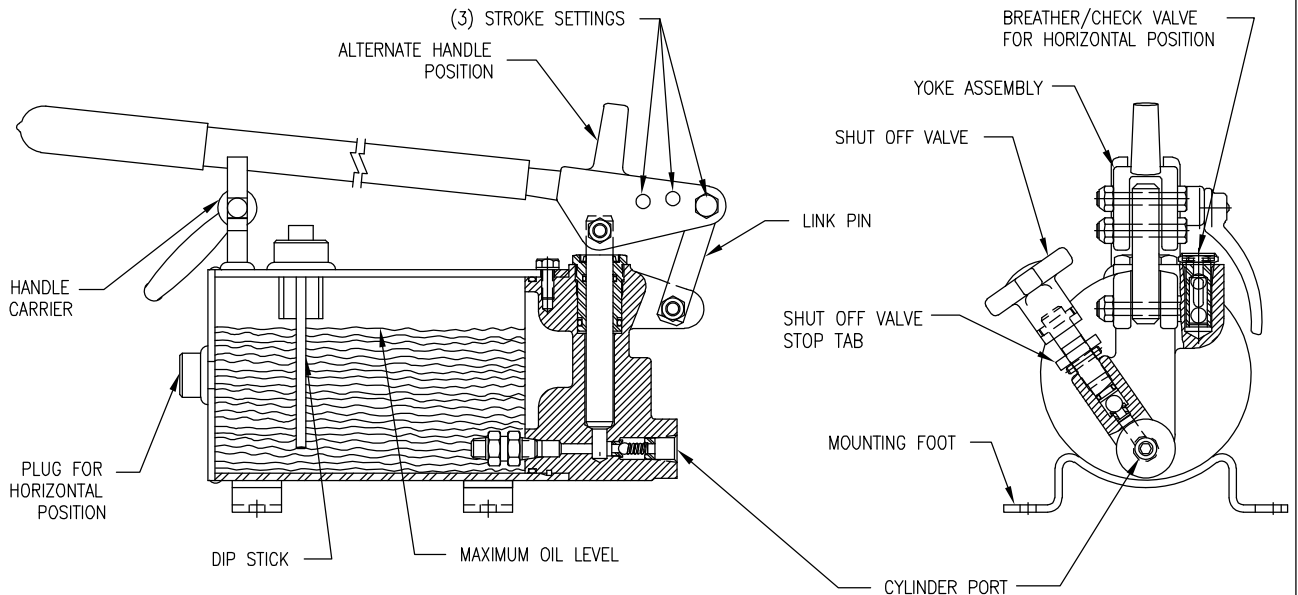
## HAND PUMP

PART NUMBER

230010700

| SYM. | REVISION                        |
|------|---------------------------------|
| B    | REDRAWN TO AUTOCAD SHOWING      |
|      | VALVE SHUTOFF STOP, ECN #14460, |
|      | 7-12-00 MOHR                    |
|      |                                 |
|      |                                 |

### INSTALLATION BULLETIN



THE PRINCE HANDPUMP IS DESIGNED FOR EITHER HORIZONTAL OR VERTICAL MOUNTING.

#### HORIZONTAL MOUNTING

THE BREATHER/CHECK VALVE ASSEMBLY MUST BE IN THE TOP CASTING PORT NEAR THE YOKE ASSEMBLY, AND A PLUG MUST BE IN THE PORT IN THE BASE END OF THE TANK. THE DIP-STICK MUST BE IN THE SIDE PORT NEAR THE HANDLE CARRIER AND THE HAND PUMP SHOULD BE FILLED TO THE BOTTOM OF THE DIPSTICK PORT.

#### VERTICAL MOUNTING

THE BREATHER/CHECK VALVE ASSEMBLY MUST BE IN THE PORT IN THE BASE END OF THE TANK, AND THE PORT IN THE TOP OF THE CASTING NEAR THE YOKE ASSEMBLY MUST BE PLUGGED. THE DIPSTICK MUST REMAIN IN THE SIDE PORT NEAR THE HANDLE CARRIER, AND THE HAND PUMP SHOULD BE FILLED TO THE LEVEL OF THIS PORT.

THREE DIFFERENT VOLUME AND PRESSURE SETTINGS ARE AVAILABLE BY MOVING THE BOLT ATTACHING THE YOKE AND LINK.

POSITION #1: 1.25 CU. IN. PER STROKE - 1500 P.S.I.\* (SHOWN IN SCHEMATIC)

POSITION #2: .95 CU. IN. PER STROKE - 2000 P.S.I.\*

POSITION #3: .60 CU. IN. PER STROKE - 3000 P.S.I.\*

\* BASED ON AN APPLIED FORCE OF 60-65 LBS. ON THE HANDLE

THE HANDLE CAN BE CLAMPED IN THE CARRIER TO PREVENT LOSS ON MOBILE APPLICATIONS, OR FOR CARRYING ON PORTABLE APPLICATIONS.

OIL FILLING CAN BE ACCOMPLISHED AT EITHER THE BREATHER PORT OR THE DIPSTICK PORT. CARE SHOULD BE TAKEN NOT TO FILL ABOVE THE BOTTOM OF THE DIPSTICK PORT. FILLING ABOVE THE BOTTOM WILL RESULT IN DAMAGE TO THE BREATHER/CHECK VALVE ASSEMBLY. *DO NOT FILL WITH THE CYLINDER EXTENDED.* THIS, ALSO, RESULTS IN AN OVER FILL CONDITION THAT WILL DAMAGE THE BREATHER/CHECK VALVE ASSEMBLY.

WHEN THE PUMP IS BOLTED DOWN AND ALL LINES ARE HOOKED UP, IT WILL BE NECESSARY TO PRIME IT IN ORDER TO START THE OIL FLOWING. TO DO THIS, FILL WITH OIL TO THE PROPER LEVEL, PUT THE LINK PIN IN THE FIRST POSITION (AS SHOWN IN THE SCHEMATIC). OPEN THE SHUT-OFF VALVE AND PUMP SEVERAL TIMES. THEN CLOSE THE SHUT-OFF VALVE AND USE THE HAND PUMP NORMALLY.