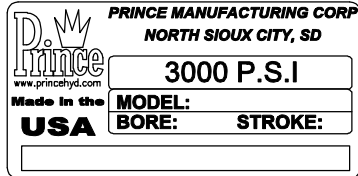


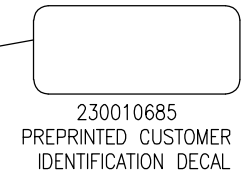
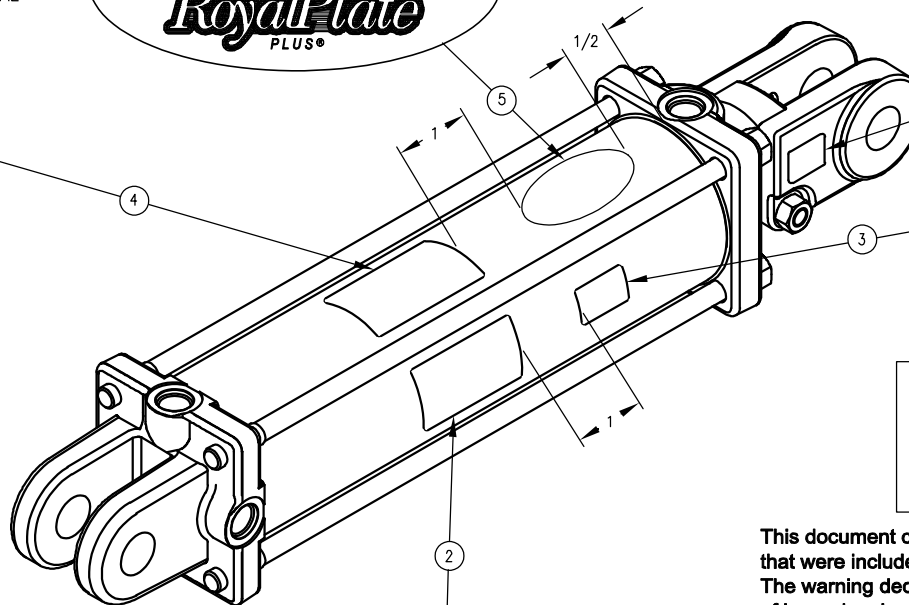
230010810
ROYALPLATE PLUS^b
DECAL



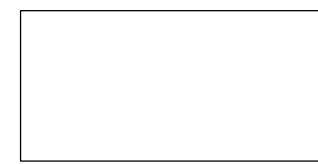
230010694
PREPRINTED PRINCE
IDENTIFICATION
DECAL

**230010606
CLEVIS WARNING
DECAL**

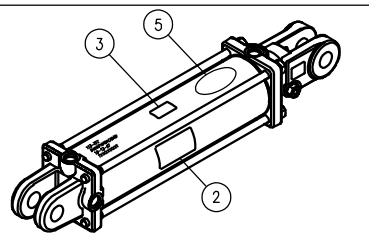
(USED ONLY ON CYLINDERS
WITH THREAD ON CLEVIS)
(SEE NOTE 3)



230010685
PREPRINTED CUSTOMER
IDENTIFICATION DECAL



**230010631
CYLINDER WARNING
DECAL**



ALTERNATE VIEW
SEE NOTE 5

This document contains instructions for the installation of warning decals that were included with your unpainted or prime coated hydraulic cylinder. The warning decals alert persons to a specific hazard, the degree or level of hazard seriousness, the probable consequence of involvement with the hazard, and how the hazard can be avoided. **APPLY THE WARNING DECALS ACCORDING TO THE INSTRUCTIONS AND SCHEMATIC FOUND ON THIS CUSTOMER DECAL INSTRUCTION SHEET AFTER CYLINDER HAS HAD THE FINAL COAT OF PAINT.** Installation of these warning decals helps complete the duty to warn of the hazard of the product. Decal color, pictograms and wording are all an important part of the message these decals convey. For questions and/or assistance concerning the warning decals please contact PrinCe Manufacturing at telephone no. 605-235-1220 or on the web at www.princehyd.com.

ITEM	QTY.	PMC PART NO.	DESCRIPTION
1	1	230010606	DECAL-CLEVIS WARNING
2	1	230010631	DECAL-CYLINDER WARNING
3	1	230010685	DECAL-CUSTOMER IDENTIFICATION
4	1	230010694	DECAL-PRINCE IDENTIFICATION
5	1	230010810	DECAL-ROYALPLATE

SYM.	REVISION
A	UPDATED DRAWING TO SHOW NEW PRINCE LOGO; ECN#17832 TJK 6/17/05
B	ADDED NOTE 5 AND ALTERNATE VIEW; ECN#18472 BMK 8/2/05

DRAWN BY: LG	DATE: 4-15-04
CHECKED BY: DMC	DATE: 4-20-04
APPROVED BY: ADM	DATE: 4-20-04
TOLERANCES:	
ANGLES ±1°	
FRACTION ±1/32 [± 0.79]	
.00 ±0.010 [± 0.25]	
.000 ±0.005 [± 0.13]	
DEBURR & BREAK ALL EDGES DO NOT SCALE DRAWING	
DIMENSIONS ARE IN INCHES OR [MILLIMETERS] UNLESS OTHERWISE SPECIFIED	

PrinCe **PRINCE MANUFACTURING CORPORATION**
612 North Derby Lane, P.O. Box 7000
North Sioux City, South Dakota 57049-7000
www.princehyd.com

CUSTOMER DECAL INSTRUCTION SHEET

SIZE	NEXT ASS'Y	PMC NO.	230010111
B	N/A		

SCALE: NONE MATERIAL: NOTED SH: 1 OF 1

- DECAL INSTRUCTIONS:
1. NO SCALE TO DECALS, SHOWN FOR REFERENCE ONLY.
 2. POSITION DECALS AS SHOWN IN SCHEMATIC. IF DECALS WILL NOT FIT AS SHOWN OR WILL NOT BE VISIBLE IN APPLICATION AS SHOWN, REPOSITION THE CYLINDER WARNING DECAL TO ALERT PERSONS OF THE SPECIFIC HAZARDS OF THE PRODUCT.
 3. APPLY CLEVIS WARNING DECAL, ITEM 1, (230010606) TO THE NUT SIDE OF CLEVIS.
 4. DECALS INCLUDED FOR INSTALLATION WILL VARY BASED UPON CYLINDER IDENTIFICATION REQUIREMENTS SPECIFIED BY THE CUSTOMER.
 5. WHEN DECAL #4 (230010694) IS NOT INSTALLED, DECAL #3 (230010685) IS TO BE INSTALLED IN ITS LOCATION. (SEE ALTERNATE VIEW IN LOWER LEFT CORNER)