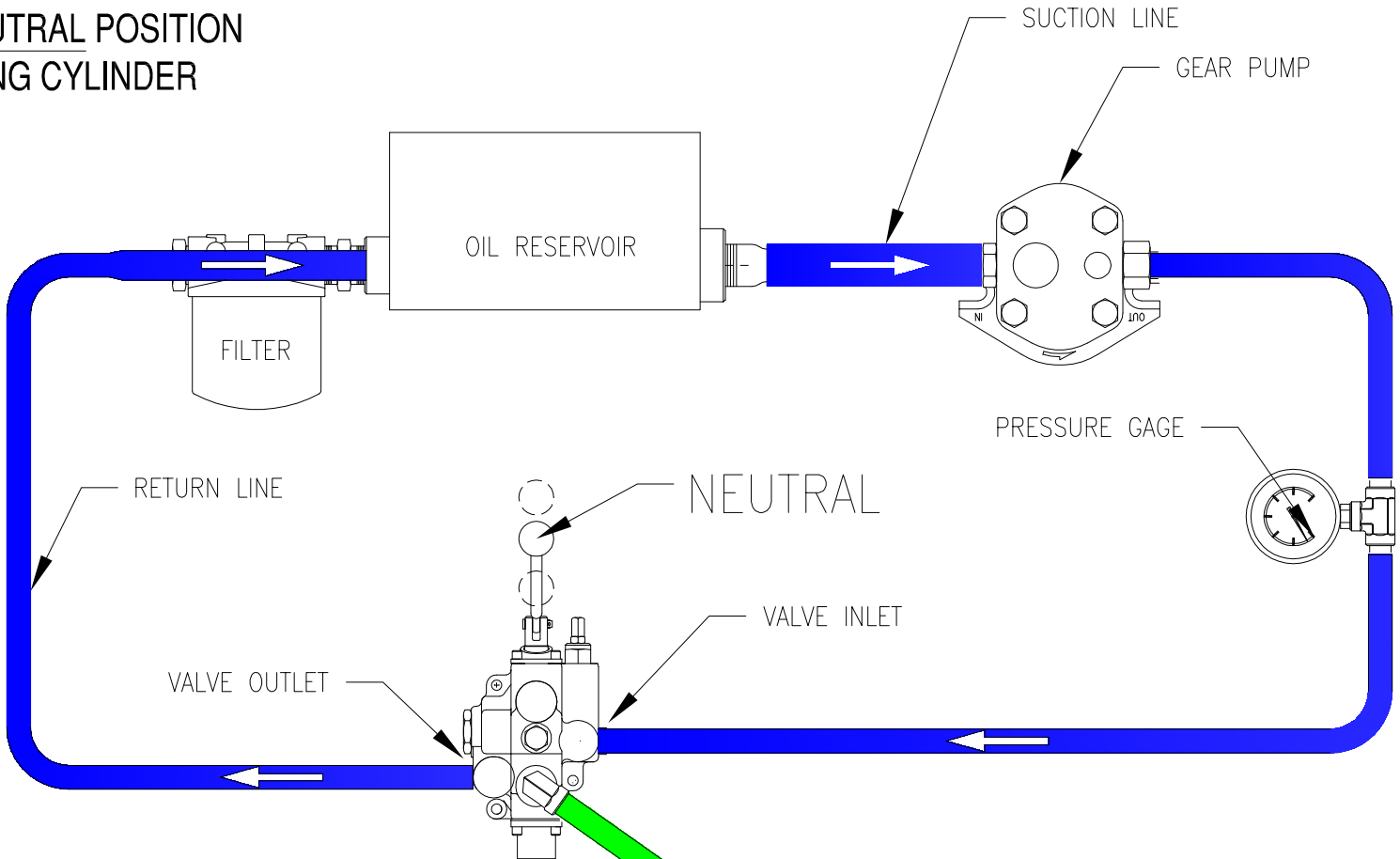




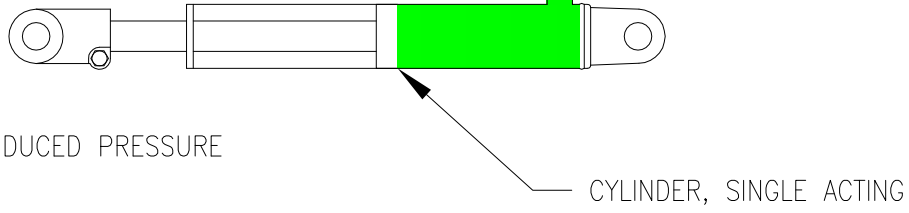


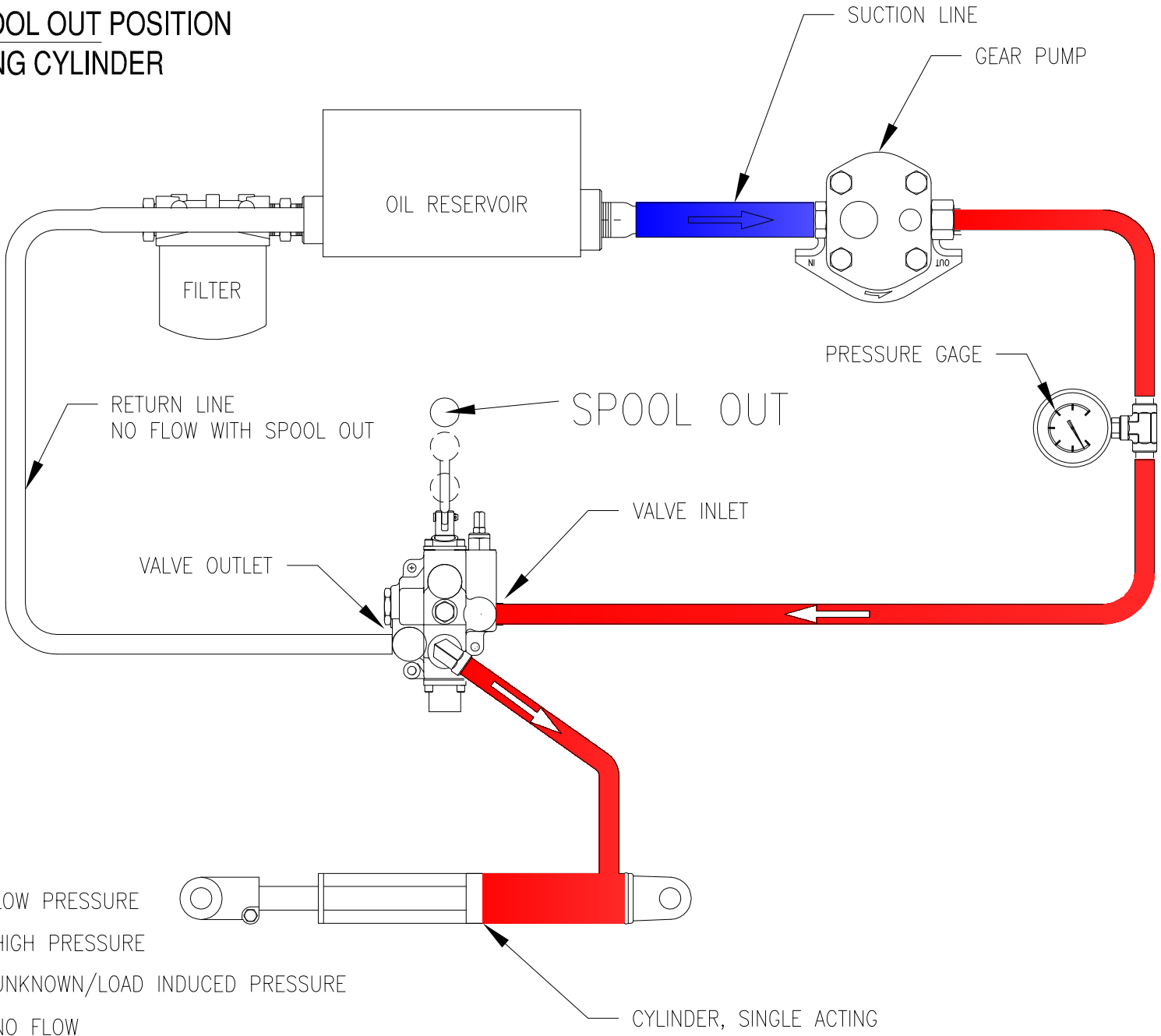
OPEN CENTER HYDRAULIC SYSTEM  
VALVE IN NEUTRAL POSITION  
SINGLE ACTING CYLINDER



-  LOW PRESSURE
-  HIGH PRESSURE
-  UNKNOWN/LOAD INDUCED PRESSURE
-  NO FLOW

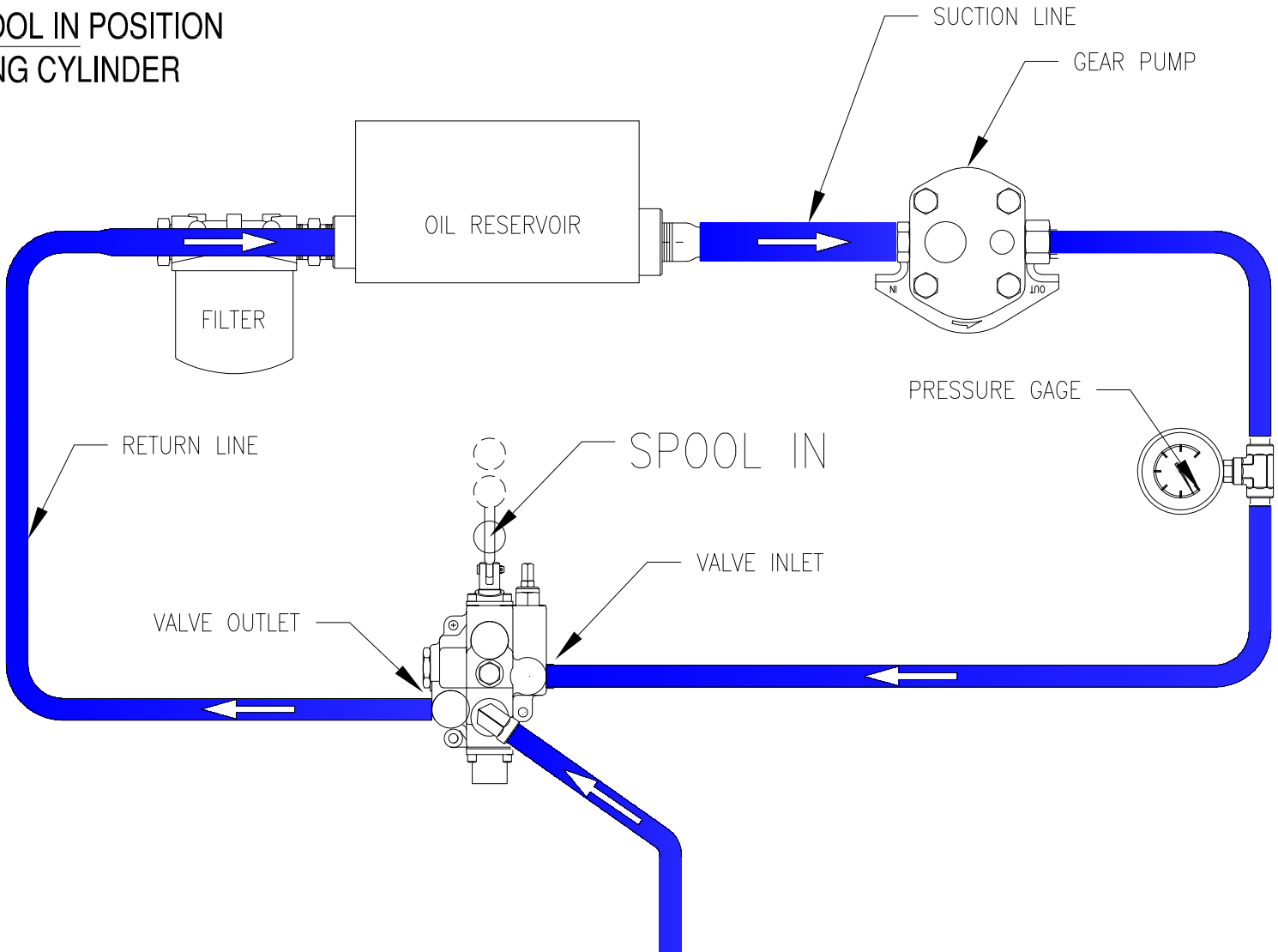


**OPEN CENTER HYDRAULIC SYSTEM  
VALVE IN SPOOL OUT POSITION  
SINGLE ACTING CYLINDER**



- LOW PRESSURE
- HIGH PRESSURE
- UNKNOWN/LOAD INDUCED PRESSURE
- NO FLOW

**OPEN CENTER HYDRAULIC SYSTEM  
VALVE IN SPOOL IN POSITION  
SINGLE ACTING CYLINDER**

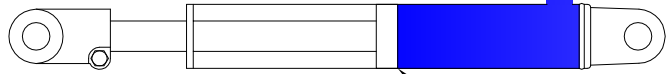


**Blue** LOW PRESSURE

**Red** HIGH PRESSURE

**Green** UNKNOWN/LOAD INDUCED PRESSURE

**White** NO FLOW



CYLINDER, SINGLE ACTING