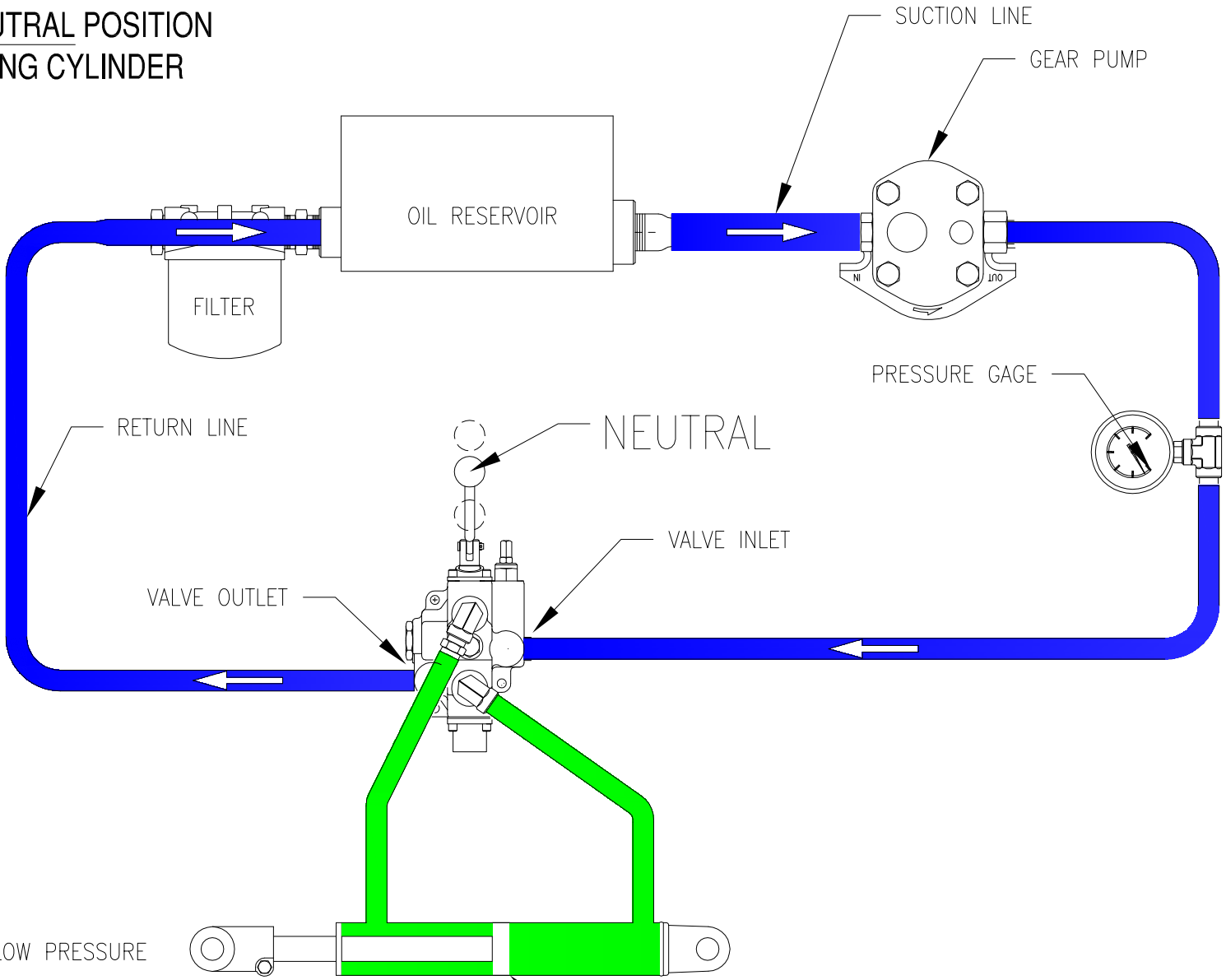


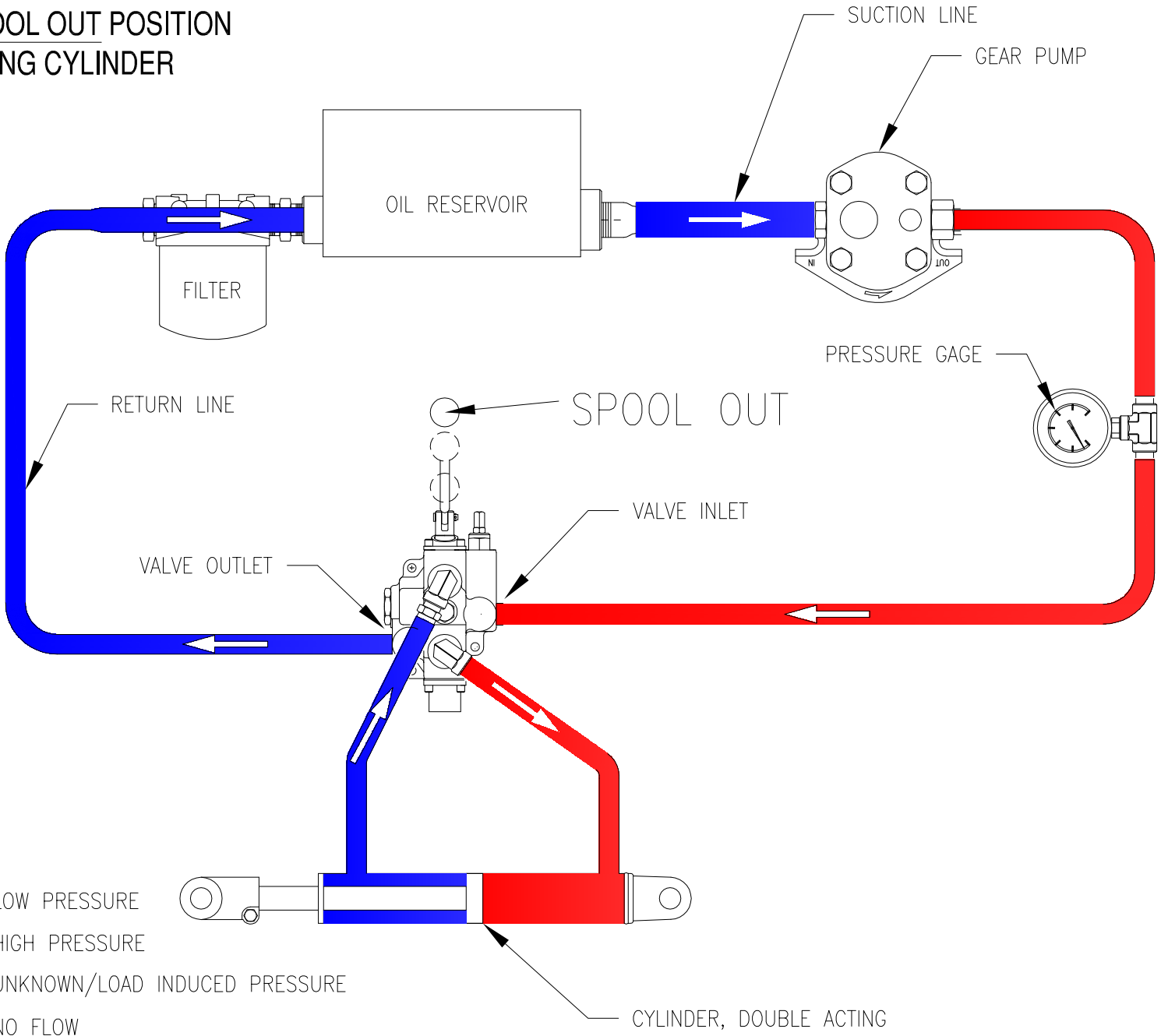
OPEN CENTER HYDRAULIC SYSTEM
VALVE IN NEUTRAL POSITION
DOUBLE ACTING CYLINDER







- LOW PRESSURE
- HIGH PRESSURE
- UNKNOWN/LOAD INDUCED PRESSURE
- NO FLOW

CYLINDER, DOUBLE ACTING

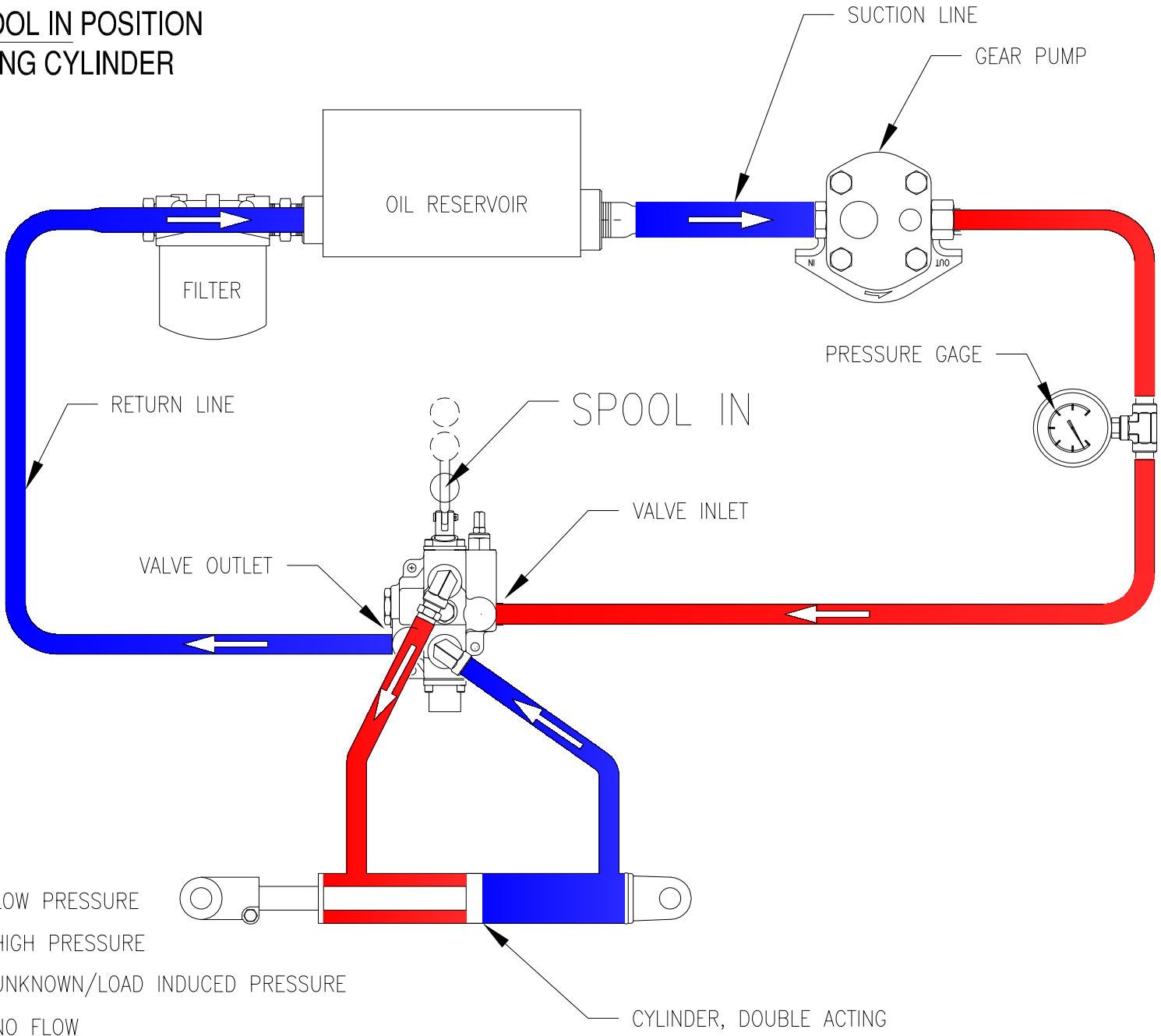
OPEN CENTER HYDRAULIC SYSTEM
VALVE IN SPOOL OUT POSITION
DOUBLE ACTING CYLINDER



-  LOW PRESSURE
-  HIGH PRESSURE
-  UNKNOWN/LOAD INDUCED PRESSURE
-  NO FLOW

CYLINDER, DOUBLE ACTING

OPEN CENTER HYDRAULIC SYSTEM
VALVE IN SPOOL IN POSITION
DOUBLE ACTING CYLINDER



- LOW PRESSURE
- HIGH PRESSURE
- UNKNOWN/LOAD INDUCED PRESSURE
- NO FLOW

CYLINDER, DOUBLE ACTING