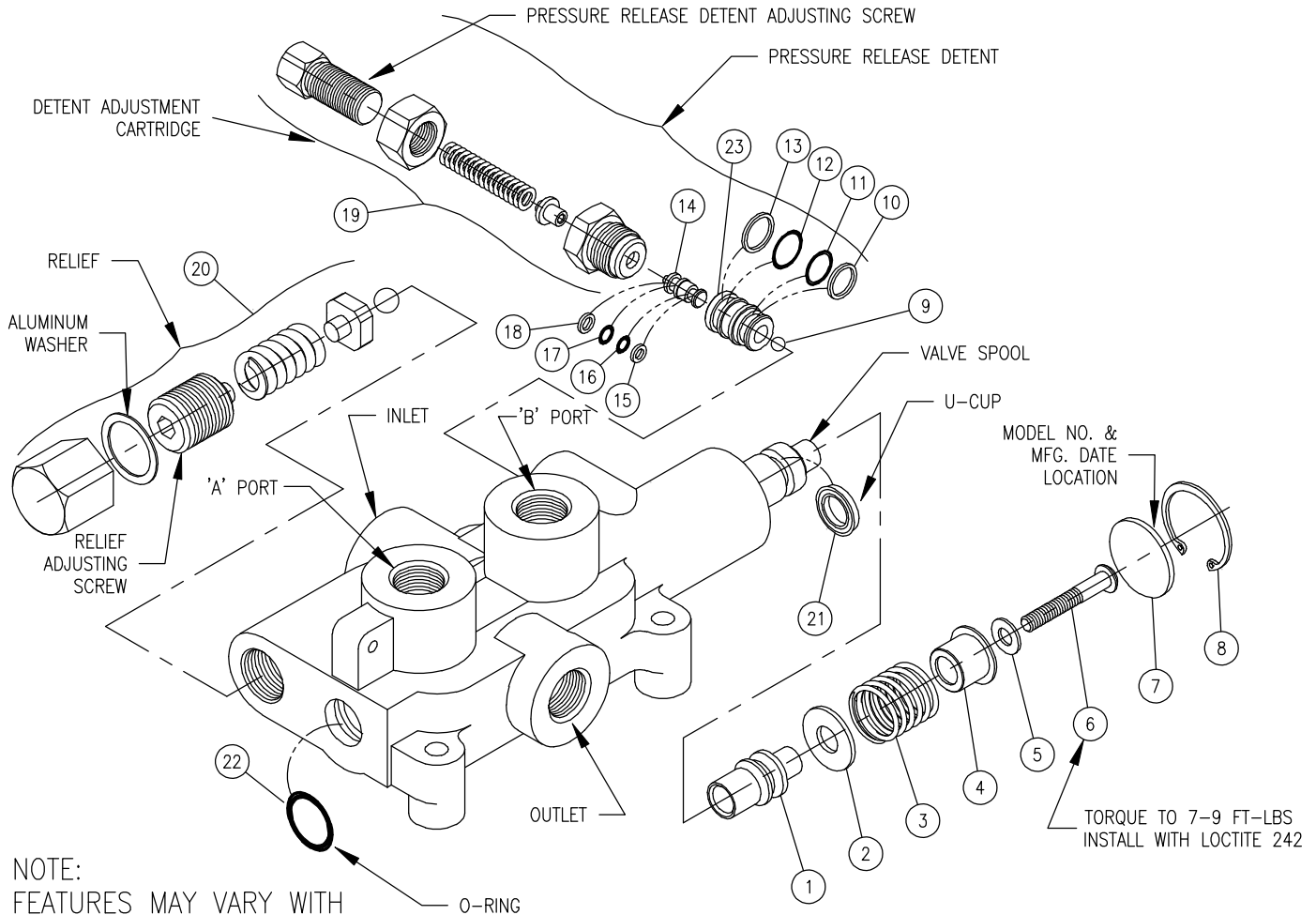


LS-3000 TYPICAL



NOTE:
FEATURES MAY VARY WITH
MODEL NO. CONSULT CATALOG

PLEASE NOTE:
BEFORE REMOVING VALVE SPOOL OR SPOOL SLEEVE, REMOVE DETENT ADJUSTING CARTRIDGE, DETENT PISTON AND STEEL BALL. INSTALL SPOOL AND SPOOL SLEEVE BEFORE REINSTALLING STEEL BALL.

PRESSURE RELEASE DETENT
This feature provides a pressure release detent for the spool 'out' (handle in) position. When the spool is manually placed in the detent position oil is directed to the 'B' work port (the port away from the handle). When the pressure in the 'B' port reaches a preset level the detent will release and the spool will center. The factory setting is 1400 psi. The detent release pressure is adjustable by loosening the jam nut and turning the adjusting screw. Turning the adjusting screw clockwise will increase the detent release pressure and counterclockwise will decrease the detent release pressure. NOTE: if the detent release pressure is set too high the spool will not center, if the pressure is too low the detent will not hold. If cap screw item 6 becomes loose detent will not function properly.

RELIEF VALVE
An adjustable ball spring relief valve is standard on all LS-3000 valves. The standard factory setting is 2250 psi @ 3 gpm and 120°F. Other settings can be specified. The relief pressure is adjusted by removing acorn nut, and turning the adjusting screw. Turning the adjusting screw clockwise will increase the pressure and counterclockwise will decrease the pressure (a pressure gauge must be installed in the inlet line whenever the relief pressure is adjusted). Do not backout adjusting screw to the point it falls out.

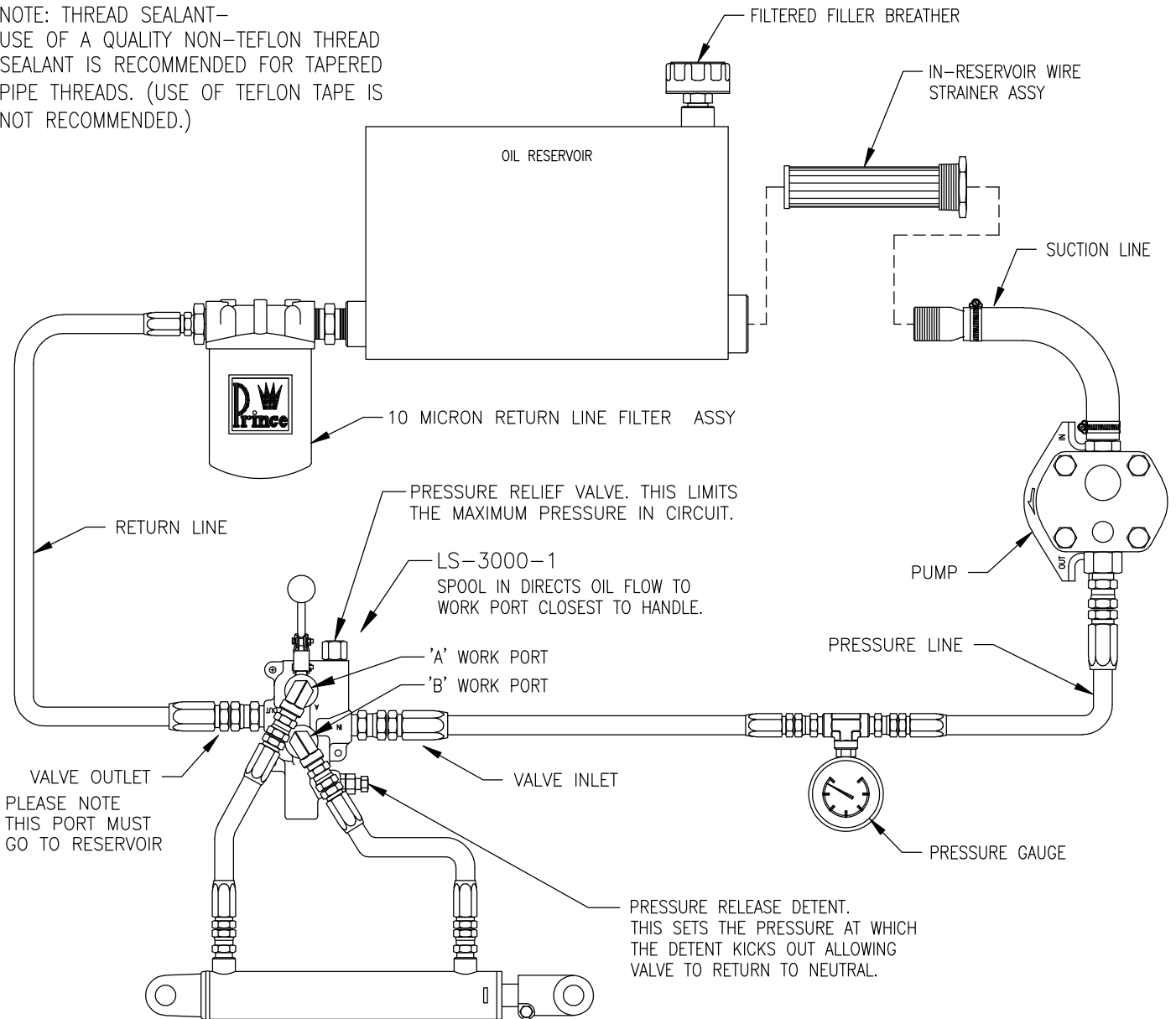
WARNING: OVERPRESSURE MAY CAUSE SUDDEN AND UNEXPECTED FAILURE OF A COMPONENT IN THE HYDRAULIC SYSTEM RESULTING IN SERIOUS PERSONAL INJURY. ALWAYS USE A GAUGE WHEN ADJUSTING A RELIEF VALVE.

LS-3000 KITS AND CARTRIDGES				
ITEM	QTY	PART NO.	DESCRIPTION	
1	1	670700019	DETENT SLEEVE	
2	1	670500033	WASHER	
3	1	670300020	SPRING, CENTERING	
4	1	671400010	STOP CUP	
5	1	670500026	WASHER	
6	1	220000953	CAP SCREW	
7	1	670500032	SPACER	
8	1	230001125	SNAP RING	
9	1	230009009	STEEL BALL	
10	1	240019013	BACK-UP WASHER	
11	1	240016737	O-RING	
12	1	240000014	O-RING	
13	1	240019014	BACK-UP WASHER	
14	1	671100011	PISTON	
15	1	240019007	BACK-UP WASHER	
16	1	240016736	O-RING	
17	1	240016068	O-RING	
18	1	240019008	BACK-UP WASHER	
19	1	660330002	DETENT ADJUSTING CARTRIDGE	
20	1	660125004	RELIEF KIT	
21	1	240016735	U-CUP	
22	1	240000210	O-RING	
23	1	671100012	PISTON SLEEVE	
		660530001	LS-3000 SEAL KIT	
		660125004	RELIEF KIT	
		660330002	DETENT ADJUSTING CARTRIDGE	
		660130007	PRESSURE RELEASE DETENT KIT	
		660130001	COMPLETE HANDLE KIT	

REV 2, 11-22-95 | REV C, ECN-18645 12/06/05 | REV D, ECN-21453 8/10/11 | REV E, ECN-21623 1/25/12

EXAMPLE LS-3000 HYDRAULIC CIRCUIT

NOTE: THREAD SEALANT—
 USE OF A QUALITY NON-TEFLON THREAD
 SEALANT IS RECOMMENDED FOR TAPERED
 PIPE THREADS. (USE OF TEFLON TAPE IS
 NOT RECOMMENDED.)



LS-3000 SPECIFICATIONS:
 MAXIMUM OPERATING PRESSURE.....2750 PSI
 MAXMUM TANK PRESSURE.....500 PSI
 MAXIMUM OPERATING TEMP.....180°F
 RECOMMENDED SYSTEM FILTRATION.....10 MICRON
 FLOW RATING.....25 GPM MAX.
 WEIGHT.....10 LBS

