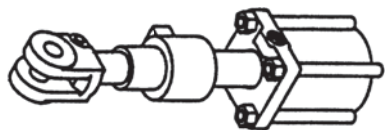




OTHER PRINCE ACCESSORIES

STROKE CONTROL ASSEMBLY



All components plated (including the base casting) to retard rust.

THREE-SLEEVE STROKE CONTROL ASSEMBLY



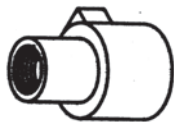
Practical, efficient and easily adapted to Prince Standard Series Cylinders. Positive stroke control adjustment
Open 5 5/8" Closed 2 1/2"

MODEL: PM-SC-1—Adapting Sleeve Thread size 1"-14 and will accept shaft size thru 1 1/8" Dia. Wt. 3 lbs. Will fit models: SAE-8408.

MODEL: PM-SC-8—Adapting Sleeve Thread size - 1 1/8"-12. Wt. 3 lbs. Will accept shaft size thru 1 3/8" Dia. Will fit models: SAE-7008, SAE-7108, SAE-7208A, PMC-42008, PMC-42508, PMC-43008, A200080, A250080, A300080.

MODEL: PMC-SC-11—Adapting Sleeve Thread size 1 5/16"-12. Will fit models: A350080.

TWO-SLEEVE STROKE CONTROL ASSEMBLY



Open 3 1/2" Closed 2 5/16"

MODEL: PM-SC-3, PM-SC-12—Wt. 3 lbs. Adapting Sleeve Thread size 1 1/2"-12. Accepts 1 1/2" shaft size. Will fit model SAE-8608, PMC-43508.

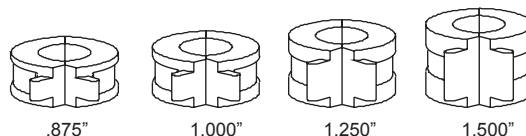
REMOTE HYDRAULIC STROKE CONTROL

A remote hydraulic stroke control is available. This stroke control makes use of the same reliable cartridge used in the internal stroke control cylinder. But it can be mounted remotely to control 2 cylinders. (See pg. C15)

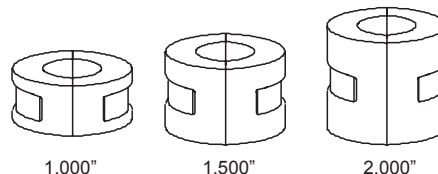


Collars are made of die cast aluminum in split halves. Flat steel springs are easy to open and snap onto the cylinder rod.

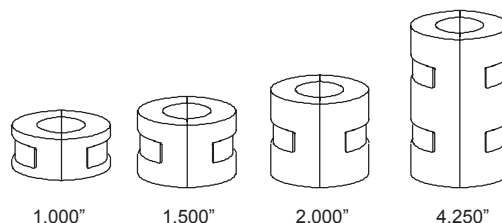
- Light Weight
- Durable
- Non-Abrasive



PM-SLCS-10: For 1.125 THRU 1.500 DIA RODS
(THIS SET HAS FINGER TABS, WITH RELIEF NOTCHES)

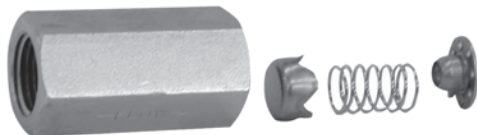


PM-SLCS-14: For 1.750 THRU 2.000 DIA RODS
(THIS SET HAS NO FINGER TABS)



PM-SLCS-15: For 1.750 THRU 2.000 DIA RODS
(THIS SET HAS NO FINGER TABS)

RESTRICTORS



Full-flow in one direction, with restriction of flow on return. Simple design permits complete reversible mounting for restricting either output or return. Interchangeable discs of various sizes for different flow metering can be quickly changed in the field. Use with pumps up to 12 GPM. 5,000 psi. 1/2" NPTF, inlet and outlet.

MODEL	SIZE	WT.
PM-R-10	BLANK	3 oz.
PM-R-12	1/16"	3 oz.
PM-R-13	3/32"	3 oz.
PM-R-14	1/8"	3 oz.
PM-R-15	5/32"	3 oz.
PM-R-16	3/16"	3 oz.
PM-R-17	7/32"	3 oz.
PM-R-18	1/4"	3 oz.
PM-R-19	.041"	3 oz.
PM-R-20	1/64"	3 oz.
PM-R-21	.031"	3 oz.
PM-R-22	.078"	3 oz.