



V A L V E S

Log Splitter Valves

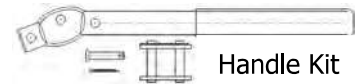
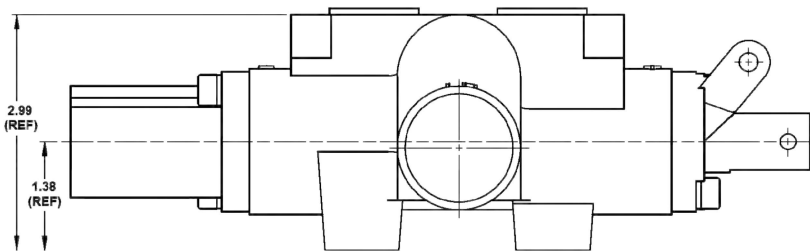


FEATURES:

- Pressure release detent at end of retract stroke / detent in spool in position
- Relief set to 2,250 PSI
- Max tank port pressure 500 PSI
- Max operating temperature 180° F

Log Splitter Valves

MODEL No.	DESCRIPTION	PORT SIZE		MAX PSI	MAX FLOW	SHIPPING WEIGHT	LIST PRICE
		WORK	IN-OUT				
660170079	Handle Kit					1	
WLS-800	Log Splitter Valve	1/2"NPTF	3/4"NPTF	3,265 PSI	30 GPM	10	Call



Handle Kit

