



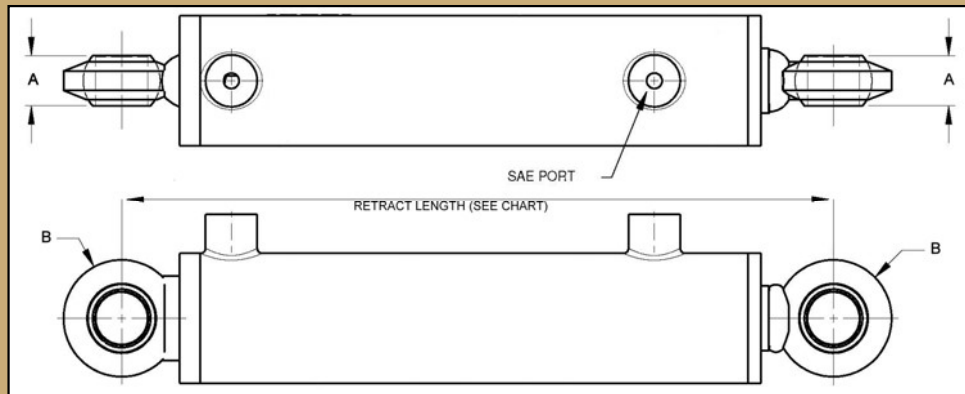
C Y L I N D E R S

3000 PSI Welded Swivel Ball End Cylinders



FEATURES:

- 100% tested for quality assurance
- Hard chrome rod plating for corrosion & wear resistance
- Cast steel end fittings for high strength & low cost
- Top port design
- SAE O-ring ports for reliable & leak-free connection
- Thread-in gland design for serviceability
- High luster black paint for protection from the elements
- Individually bagged & boxed for secure storage & transport
- Spherical End Fittings



MODEL	(A) SWIVEL WIDTH	(B) SWIVEL DIAMETER
WWSB1000-S	1.0"	2.0"
WWSB1500-S	1.0"	2.0"
WWSB2000-S	1.0"	2.25"
WWSB2500-S	1.0"	2.25"
WWSB3000-S	1.75"	3.13"

MODEL	BORE x STROKE	RETRACT	ROD DIA.	COLUMN LOAD RATINGS (PSI)	PORTS	PIN HOLE	WT/LBS	LIST PRICE
WWSB1004-S	1 X 4	10	0.625	FULL PSI	#6 SAE	0.5	5	143.00
WWSB1006-S	1 X 6	12	0.625	FULL PSI	#6 SAE	0.5	5	150.00
WWSB1008-S	1 X 8	14	0.625	FULL PSI	#6 SAE	0.5	6	156.00
WWSB1010-S	1 X 10	16	0.625	FULL PSI	#6 SAE	0.5	7	164.00
WWSB1012-S	1 X 12	18	0.625	2200 (2800 PSI)*	#6 SAE	0.5	7	171.00

WWSB1504-S	1.5 X 4	11.25	1	FULL PSI	#6 SAE	0.77	6	144.00
WWSB1506-S	1.5 X 6	13.25	1	FULL PSI	#6 SAE	0.77	7	144.00
WWSB1508-S	1.5 X 8	15.25	1	FULL PSI	#6 SAE	0.77	9	166.00
WWSB1510-S	1.5 X 10	17.25	1	FULL PSI	#6 SAE	0.77	10	187.00
WWSB1512-S	1.5 X 12	19.25	1	FULL PSI	#6 SAE	0.77	11	209.00
WWSB1514-S	1.5 X 14	21.25	1	FULL PSI	#6 SAE	0.77	12	230.00
WWSB1516-S	1.5 X 16	23.25	1	FULL PSI	#6 SAE	0.77	13	251.00

WWSB2006-S	2 X 6	13.5	1.25	FULL PSI	#8 SAE	1.01	15	200.00
WWSB2008-S	2 X 8	15.5	1.25	FULL PSI	#8 SAE	1.01	16	223.00
WWSB2010-S	2 X 10	17.5	1.25	FULL PSI	#8 SAE	1.01	17	244.00
WWSB2012-S	2 X 12	19.5	1.25	FULL PSI	#8 SAE	1.01	19	266.00
WWSB2016-S	2 X 16	23.5	1.25	FULL PSI	#8 SAE	1.01	22	308.00
WWSB2020-S	2 X 20	27.5	1.25	FULL PSI	#8 SAE	1.01	24	344.00
WWSB2024-S	2 X 24	31.5	1.25	FULL PSI	#8 SAE	1.01	27	381.00
WWSB2030-S	2 X 30	37.5	1.25	6300 (2000 PSI)*	#8 SAE	1.01	32	424.00

*THESE MODELS HAVE A COLUMN LOAD RESTRICTION THAT LIMITS THE MAXIMUM PUSH LOAD THAT THE CYLINDER CAN SAFELY BE OPERATED AT.



C Y L I N D E R S

3000 PSI Welded Swivel Ball End Cylinders

MODEL	BORE x STROKE	RETRACT	ROD DIA.	COLUMN LOAD RATINGS (PSI)	PORTS	PIN HOLE	WT/LBS	LIST PRICE
WWSB2506-S	2.5 X 6	13.5	1.5	FULL PSI	#8 SAE	1.01	17	243.00
WWSB2508-S	2.5 X 8	15.5	1.5	FULL PSI	#8 SAE	1.01	19	265.00
WWSB2510-S	2.5 X 10	17.5	1.5	FULL PSI	#8 SAE	1.01	21	285.00
WWSB2512-S	2.5 X 12	19.5	1.5	FULL PSI	#8 SAE	1.01	23	300.00
WWSB2516-S	2.5 X 16	23.5	1.5	FULL PSI	#8 SAE	1.01	27	343.00
WWSB2520-S	2.5 X 20	27.5	1.5	FULL PSI	#8 SAE	1.01	30	379.00
WWSB2524-S	2.5 X 24	31.5	1.5	FULL PSI	#8 SAE	1.01	34	422.00

WWSB3006-S	3 X 6	14.25	1.5	FULL PSI	#8 SAE	1.01	20	272.00
WWSB3008-S	3 X 8	16.25	1.5	FULL PSI	#8 SAE	1.01	22	290.00
† WWSB3010-S	3 X 10	18.25	1.5	FULL PSI	#8 SAE	1.01	24	Call
WWSB3012-S	3 X 12	20.25	1.5	FULL PSI	#8 SAE	1.01	26	348.00
WWSB3016-S	3 X 16	24.25	1.5	FULL PSI	#8 SAE	1.01	31	384.00
WWSB3020-S	3 X 20	28.25	1.5	FULL PSI	#8 SAE	1.01	36	427.00
† WWSB3024-S	3 X 24	32.25	1.5	19500 (2750 PSI)*	#8 SAE	1.01	41	471.00

*THESE MODELS HAVE A COLUMN LOAD RESTRICTION THAT LIMITS THE MAXIMUM PUSH LOAD THAT THE CYLINDER CAN SAFELY BE OPERATED AT.

† NON-STOCKED ITEMS AVAILABLE AT STANDARD LEAD-TIME.

CHECK OUR PRINCE WEBSITE OR CONTACT YOUR SALES REP TO VERIFY IF NON-STOCKED ITEMS ARE STILL ON HAND FOR IMMEDIATE SHIPMENT.