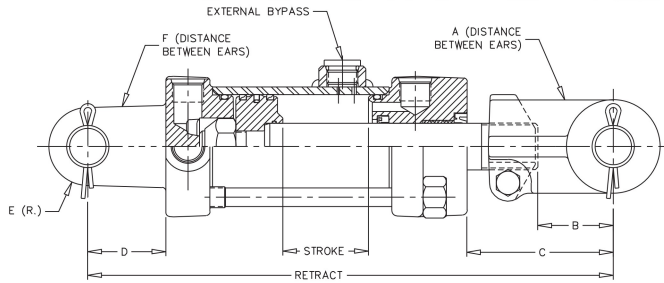


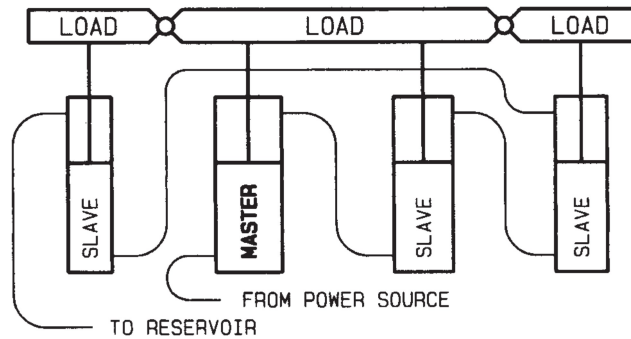
TIE-ROD CONSTRUCTION - EXTERNAL STYLE BYPASS



FEATURES:

- Heavy duty tie-rod construction
- Induction hardened piston rods plated with RoyalPlate Plus®
- High performance polyamide rod bearing
- #8 S.A.E.(3/4-16 ORB) ports
- For use with 1" pins
- Pins, clips & cotters included
- ORB to pipe adaptors are not included
- Color is gloss black
- Same high quality features found in all Prince Tie-rod Cylinders with the addition of an external bypass (rephase)

TO RAISE LOADS EQUALLY



NOTES:

- Master cylinder provides power for the entire system
- Each cylinder in series has less pressure in proportion to the load on it
- Designed for use in a series cylinder circuit at a maximum of 3000 PSI, cylinder not to be used at 3000 PSI in push or pull as a single cylinder
- Stroke control assemblies may be installed on 8" stroke models
- Can be used with remote stroke control valve PM-SC-10
- Can be used with holding valves HC-V-AA21 and HC-V-AA22
- Master cylinder equipped with series/rephase and stroke control are available. Contact Prince Sales Department.
- Custom designs in welded or tie-rod style for larger or smaller bore sizes
- Exact matched sets available
- Contact Prince Engineering Department for special applications

| Bore | Rod Dia. | 8" Stroke 20 1/4" Retract | 10" Stroke 22 1/4" Retract | 12" Stroke 24 1/4" Retract | 16" Stroke 28 1/4" Retract | A | B | C | D | E | F |
|-------|----------|------------------------------|-------------------------------|-------------------------------|-------------------------------|-------|---------|---------|-------|--------|--------|
| 2 1/2 | 1 1/8 | PMS-AM-2586 | PMS-AM-2629 | PMS-AM-2588 | PMS-AM-2590 | 1 1/8 | 1 13/16 | 5 23/32 | 1 7/8 | 15/16 | 1 1/16 |
| 2 3/4 | 1 1/8 | PMS-AM-2580 | PMS-AM-2627 | PMS-AM-2582 | PMS-AM-2584 | 1 1/8 | 1 13/16 | 5 23/32 | 1 7/8 | 1 1/16 | 1 1/16 |
| 3 | 1 1/4 | PMS-AM-2574 | PMS-AM-2625 | PMS-AM-2576 | PMS-AM-2578 | 1 1/8 | 1 13/16 | 5 23/32 | 1 7/8 | 1 1/16 | 1 1/16 |
| 3 1/4 | 1 1/4 | PMS-AM-2568 | PMS-AM-2623 | PMS-AM-2570 | PMS-AM-2572 | 1 1/8 | 1 13/16 | 5 23/32 | 1 7/8 | 1 1/4 | 1 1/16 |
| 3 1/2 | 1 1/4 | PMS-AM-2562 | PMS-AM-2621 | PMS-AM-2564 | PMS-AM-2566 | 1 1/8 | 1 13/16 | 5 23/32 | 1 7/8 | 1 1/4 | 1 1/16 |
| 3 3/4 | 1 3/8 | PMS-AM-2556A | PMS-AM-2619A | PMS-AM-2558A | PMS-AM-2560A | 1 1/8 | 1 7/8 | 5 11/32 | 1 3/4 | 1 1/4 | 1 1/8 |
| 4 | 1 3/8 | PMS-AM-2550A | PMS-AM-2617A | PMS-AM-2552A | PMS-AM-2554A | 1 1/8 | 1 7/8 | 5 11/32 | 1 3/4 | 1 1/4 | 1 1/8 |
| 4 1/2 | 2 | PMS-AM-2544 | PMS-AM-2615 | PMS-AM-2546 | PMS-AM-2548 | 1 1/8 | 1 7/8 | 4 1/32 | 1 3/4 | 1 3/8 | 1 1/8 |
| 4 3/4 | 1 1/2 | PMS-AM-2538 | PMS-AM-2613 | PMS-AM-2540 | PMS-AM-2542 | 1 1/8 | 1 7/8 | 4 1/32 | 1 3/4 | 1 3/8 | 1 1/8 |
| 5 | 1 1/2 | PMS-AM-2532 | PMS-AM-2611 | PMS-AM-2534 | PMS-AM-2536 | 1 1/8 | 1 7/8 | 4 1/32 | 1 3/4 | 1 3/8 | 1 1/8 |