



THE MAGNUM LINE

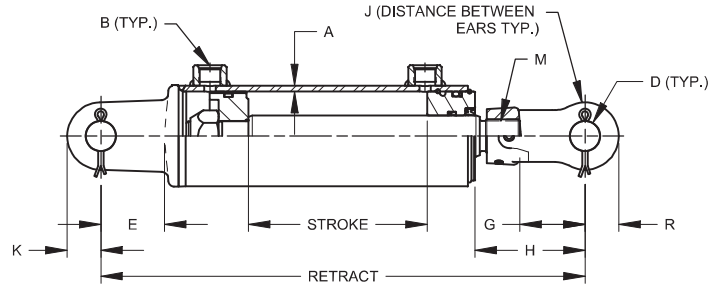
3000 PSI

THE "MAGNUM" Welded-DA-Heavy Duty



FEATURES:

- Double Acting
- Heavy duty welded construction
- Chromed, ground, & polished rod
- Unitized piston
- Clevis cylinders
- Color is gloss black
- 3000 PSI maximum operating pressure
- Replaces The Sword Line
- Use of stroke controls not applicable to Magnum cylinders



Rods are sized for a maximum safe push load (2:1 safety factor) given in the table. This is based on the pin configuration shown with no center support.

Model No.	Style	Wt.	PSI	Column Load (Lbs.)	Retract	Rod Dia	A	B	D	E	G	H	J	K	M	R
PC2008CL	2 X 8	14	3000	FULL PSI	18 1/4	1 1/8	3/16	#8 SAE	1	2 1/8	2 1/8	3 11/16	1 1/16	1	1 1/8-12	1 1/8
*PC2008CL-ASAE	2 X 8	15	3000	FULL PSI	20 1/4	1 1/8	3/16	#8 SAE	1	2 1/8	2 1/8	5 11/16	1 1/16	1	1 1/8-12	1 1/8
*PC2010CL	2 X 10	16	3000	FULL PSI	20 1/4	1 1/8	3/16	#8 SAE	1	2 1/8	2 1/8	3 11/16	1 1/16	1	1 1/8-12	1 1/8
*PC2012CL	2 X 12	16	3000	FULL PSI	22 1/4	1 1/8	3/16	#8 SAE	1	2 1/8	2 1/8	3 11/16	1 1/16	1	1 1/8-12	1 1/8
PC2016CL	2 X 16	19	3000	FULL PSI	26 1/4	1 1/8	3/16	#8 SAE	1	2 1/8	2 1/8	3 11/16	1 1/16	1	1 1/8-12	1 1/8
*PC2016CL-ASAE	2 X 16	21	3000	7,059	31 1/2	1 1/8	3/16	#8 SAE	1	2 1/8	2 1/8	8 15/16	1 1/16	1	1 1/8-12	1 1/8
*PC2020CL	2 X 20	22	3000	7,132	30 1/4	1 1/8	3/16	#8 SAE	1	2 1/8	2 1/8	3 11/16	1 1/16	1	1 1/8-12	1 1/8
*PC2024CL	2 X 24	24	3000	5,304	34 1/4	1 1/8	3/16	#8 SAE	1	2 1/8	2 1/8	3 11/16	1 1/16	1	1 1/8-12	1 1/8
PC2508CL	2 1/2 X 8	17	3000	FULL PSI	18 1/4	1 1/4	3/16	#8 SAE	1	2 1/8	2 1/8	3 15/16	1 1/16	1	1 1/8-12	1 1/8
*PC2508CL-ASAE	2 1/2 X 8	18	3000	FULL PSI	20 1/4	1 1/4	3/16	#8 SAE	1	2 1/8	2 1/8	5 11/16	1 1/16	1	1 1/8-12	1 1/8
*PC2510CL	2 1/2 X 10	19	3000	FULL PSI	20 1/4	1 1/4	3/16	#8 SAE	1	2 1/8	2 1/8	3 15/16	1 1/16	1	1 1/8-12	1 1/8
*PC2512CL	2 1/2 X 12	20	3000	FULL PSI	22 1/4	1 1/4	3/16	#8 SAE	1	2 1/8	2 1/8	3 15/16	1 1/16	1	1 1/8-12	1 1/8
PC2516CL	2 1/2 X 16	24	3000	FULL PSI	26 1/4	1 1/4	3/16	#8 SAE	1	2 1/8	2 1/8	3 15/16	1 1/16	1	1 1/8-12	1 1/8
*PC2516CL-ASAE	2 1/2 X 16	25	3000	10,710	31 1/2	1 1/4	3/16	#8 SAE	1	2 1/8	2 1/8	9 1/4	1 1/16	1	1 1/8-12	1 1/8
*PC2520CL	2 1/2 X 20	27	3000	10,829	30 1/4	1 1/4	3/16	#8 SAE	1	2 1/8	2 1/8	3 15/16	1 1/16	1	1 1/8-12	1 1/8
*PC2524CL	2 1/2 X 24	30	3000	8,067	34 1/4	1 1/4	3/16	#8 SAE	1	2 1/8	2 1/8	3 15/16	1 1/16	1	1 1/8-12	1 1/8
PC3008CL	3 X 8	21	3000	FULL PSI	18 1/4	1 3/8	3/16	#8 SAE	1	2 1/8	2 1/8	3 11/16	1 1/16	1 1/8	1 1/8-12	1 1/8
*PC3008CL-ASAE	3 X 8	22	3000	FULL PSI	20 1/4	1 3/8	3/16	#8 SAE	1	2 1/8	2 1/8	5 11/16	1 1/16	1 1/8	1 1/8-12	1 1/8
*PC3010CL	3 X 10	23	3000	FULL PSI	20 1/4	1 3/8	3/16	#8 SAE	1	2 1/8	2 1/8	3 11/16	1 1/16	1 1/8	1 1/8-12	1 1/8
*PC3012CL	3 X 12	25	3000	FULL PSI	22 1/4	1 3/8	3/16	#8 SAE	1	2 1/8	2 1/8	3 11/16	1 1/16	1 1/8	1 1/8-12	1 1/8
PC3016CL	3 X 16	29	3000	FULL PSI	26 1/4	1 3/8	3/16	#8 SAE	1	2 1/8	2 1/8	3 11/16	1 1/16	1 1/8	1 1/8-12	1 1/8
PC3016CL-ASAE	3 X 16	31	3000	15,896	31 1/2	1 3/8	3/16	#8 SAE	1	2 1/8	2 1/8	8 15/16	1 1/16	1 1/8	1 1/8-12	1 1/8
*PC3020CL	3 X 20	33	3000	16,119	30 1/4	1 3/8	3/16	#8 SAE	1	2 1/8	2 1/8	3 11/16	1 1/16	1 1/8	1 1/8-12	1 1/8
*PC3024CL	3 X 24	37	3000	11,988	34 1/4	1 3/8	3/16	#8 SAE	1	2 1/8	2 1/8	3 11/16	1 1/16	1 1/8	1 1/8-12	1 1/8
PC3508CL	3 1/2 X 8	27	3000	FULL PSI	18 1/4	1 3/8	3/16	#8 SAE	1	2 1/8	2 1/8	3 11/16	1 1/16	1 1/4	1 5/16-12	1 1/4
*PC3508CL-ASAE	3 1/2 X 8	28	3000	FULL PSI	20 1/4	1 3/8	3/16	#8 SAE	1	2 1/8	2 1/8	5 11/16	1 1/16	1 1/4	1 5/16-12	1 1/4
*PC3510CL	3 1/2 X 10	29	3000	FULL PSI	20 1/4	1 3/8	3/16	#8 SAE	1	2 1/8	2 1/8	3 11/16	1 1/16	1 1/4	1 5/16-12	1 1/4
*PC3512CL	3 1/2 X 12	31	3000	FULL PSI	22 1/4	1 3/8	3/16	#8 SAE	1	2 1/8	2 1/8	3 11/16	1 1/16	1 1/4	1 5/16-12	1 1/4
PC3516CL	3 1/2 X 16	35	3000	23,121	26 1/4	1 3/8	3/16	#8 SAE	1	2 1/8	2 1/8	3 11/16	1 1/16	1 1/4	1 5/16-12	1 1/4
PC3516CL-ASAE	3 1/2 X 16	38	3000	16,047	31 1/2	1 3/8	3/16	#8 SAE	1	2 1/8	2 1/8	8 15/16	1 1/16	1 1/4	1 5/16-12	1 1/4
PC3520CL	3 1/2 X 20	40	3000	16,329	30 1/4	1 3/8	3/16	#8 SAE	1	2 1/8	2 1/8	3 11/16	1 1/16	1 1/4	1 5/16-12	1 1/4
*PC3524CL	3 1/2 X 24	44	3000	12,143	34 1/4	1 3/8	3/16	#8 SAE	1	2 1/8	2 1/8	3 11/16	1 1/16	1 1/4	1 5/16-12	1 1/4
PC4008CL	4 X 8	35	3000	FULL PSI	18 1/4	1 3/4	7/32	#10 SAE	1	2 1/8	2 1/8	3 11/16	1 1/16	1 1/4	1 1/2-12	1 1/4
*PC4008CL-ASAE	4 X 8	36	3000	FULL PSI	20 1/4	1 3/4	7/32	#10 SAE	1	2 1/8	2 1/8	5 11/16	1 1/16	1 1/4	1 1/2-12	1 1/4
*PC4010CL	4 X 10	38	3000	FULL PSI	20 1/4	1 3/4	7/32	#10 SAE	1	2 1/8	2 1/8	3 11/16	1 1/16	1 1/4	1 1/2-12	1 1/4
*PC4012CL	4 X 12	41	3000	FULL PSI	22 1/4	1 3/4	7/32	#10 SAE	1	2 1/8	2 1/8	3 11/16	1 1/16	1 1/4	1 1/2-12	1 1/4
PC4016CL	4 X 16	47	3000	FULL PSI	26 1/4	1 3/4	7/32	#10 SAE	1	2 1/8	2 1/8	3 11/16	1 1/16	1 1/4	1 1/2-12	1 1/4
PC4016CL-ASAE	4 X 16	50	3000	FULL PSI	31 1/2	1 3/4	7/32	#10 SAE	1	2 1/8	2 1/8	8 15/16	1 1/16	1 1/4	1 1/2-12	1 1/4
*PC4020CL	4 X 20	53	3000	FULL PSI	30 1/4	1 3/4	7/32	#10 SAE	1	2 1/8	2 1/8	3 11/16	1 1/16	1 1/4	1 1/2-12	1 1/4
*PC4024CL	4 X 24	59	3000	31,557	34 1/4	1 3/4	7/32	#10 SAE	1	2 1/8	2 1/8	3 11/16	1 1/16	1 1/4	1 1/2-12	1 1/4
*PC4030CL	4 X 30	68	3000	21,673	40 1/4	1 3/4	7/32	#10 SAE	1	2 1/8	2 1/8	3 11/16	1 1/16	1 1/4	1 1/2-12	1 1/4
PC5008CL	5 X 8	62	3000	FULL PSI	20 1/4	2	3/8	#12 SAE	1 1/4	2 1/8	2 1/8	4 13/32	1 3/8	1 3/8	1 3/4-12	1 1/4
PC5010CL	5 X 10	67	3000	FULL PSI	22 1/4	2	3/8	#12 SAE	1 1/4	2 1/8	2 1/8	4 13/32	1 3/8	1 3/8	1 3/4-12	1 1/4
PC5012CL	5 X 12	72	3000	FULL PSI	24 1/4	2	3/8	#12 SAE	1 1/4	2 1/8	2 1/8	4 13/32	1 3/8	1 3/8	1 3/4-12	1 1/4
PC5016CL	5 X 16	82	3000	FULL PSI	28 1/4	2	3/8	#12 SAE	1 1/4	2 1/8	2 1/8	4 13/32	1 3/8	1 3/8	1 3/4-12	1 1/4
PC5016CL-ASAE	5 X 16	85	3000	FULL PSI	31 1/2	2	3/8	#12 SAE	1 1/4	2 1/8	2 1/8	4 13/32	1 3/8	1 3/8	1 3/4-12	1 1/4
PC5020CL	5 X 20	92	3000	FULL PSI	32 1/4	2	3/8	#12 SAE	1 1/4	2 1/8	2 1/8	4 13/32	1 3/8	1 3/8	1 3/4-12	1 1/4
PC5024CL	5 X 24	101	3000	50,970	36 1/4	2	3/8	#12 SAE	1 1/4	2 1/8	2 1/8	4 13/32	1 3/8	1 3/8	1 3/4-12	1 1/4
PC5030CL	5 X 30	116	3000	35,411	42 1/4	2	3/8	#12 SAE	1 1/4	2 1/8	2 1/8	4 13/32	1 3/8	1 3/8	1 3/4-12	1 1/4

* Frequently stocked items



THE MAGNUM LINE

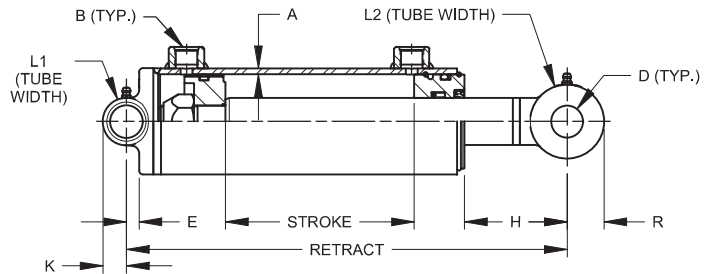
3000 PSI

THE "MAGNUM" Welded-DA-Heavy Duty-Crosstube



FEATURES:

- Double Acting
- Heavy duty welded construction
- Chromed, ground, & polished rod
- Unitized piston
- Crosstube cylinders
- Crosstube end fitting with grease zerks
- Color is gloss black
- 3000 PSI maximum operating pressure
- Use of stroke controls not applicable to Magnum cylinders



Rods are sized for a maximum safe push load (2:1 safety factor) given in the table. This is based on the pin configuration shown with no center support.

Model No.	Style	Wt.	PSI	Column Load (Lbs.)	Retract	Rod. Dia	A	B	D	E	H	K	L1	L2	R
PC2006XT	2 X 6	11	3000	FULL PSI	14	1 1/8	3/16	#8 SAE	1	-	3 5/16	1	2 3/8	1 1/2	3/4
*PC2008XT	2 X 8	12	3000	FULL PSI	16	1 1/8	3/16	#8 SAE	1	-	3 5/16	1	2 3/8	1 1/2	3/4
*PC2010XT	2 X 10	14	3000	FULL PSI	18	1 1/8	3/16	#8 SAE	1	-	3 5/16	1	2 3/8	1 1/2	3/4
*PC2012XT	2 X 12	15	3000	FULL PSI	20	1 1/8	3/16	#8 SAE	1	-	3 5/16	1	2 3/8	1 1/2	3/4
PC2014XT	2 X 14	16	3000	FULL PSI	22	1 1/8	3/16	#8 SAE	1	-	3 5/16	1	2 3/8	1 1/2	3/4
*PC2016XT	2 X 16	17	3000	FULL PSI	24	1 1/8	3/16	#8 SAE	1	-	3 5/16	1	2 3/8	1 1/2	3/4
PC2018XT	2 X 18	19	3000	8,939	26	1 1/8	3/16	#8 SAE	1	-	3 5/16	1	2 3/8	1 1/2	3/4
*PC2020XT	2 X 20	20	3000	7,533	28	1 1/8	3/16	#8 SAE	1	-	3 5/16	1	2 3/8	1 1/2	3/4
*PC2024XT	2 X 24	23	3000	5,559	32	1 1/8	3/16	#8 SAE	1	-	3 5/16	1	2 3/8	1 1/2	3/4
PC2030XT	2 X 30	27	3000	3,788	38	1 1/8	3/16	#8 SAE	1	-	3 5/16	1	2 3/8	1 1/2	3/4
PC2506XT	2 1/2 X 6	14	3000	FULL PSI	14	1 3/8	3/16	#8 SAE	1	3/8	3 1/2	3/4	3	1 3/8	7/8
PC2508XT	2 1/2 X 8	16	3000	FULL PSI	16	1 3/8	3/16	#8 SAE	1	3/8	3 1/2	3/4	3	1 3/8	7/8
PC2510XT	2 1/2 X 10	18	3000	FULL PSI	18	1 3/8	3/16	#8 SAE	1	3/8	3 1/2	3/4	3	1 3/8	7/8
PC2512XT	2 1/2 X 12	19	3000	FULL PSI	20	1 3/8	3/16	#8 SAE	1	3/8	3 1/2	3/4	3	1 3/8	7/8
PC2514XT	2 1/2 X 14	21	3000	FULL PSI	22	1 3/8	3/16	#8 SAE	1	3/8	3 1/2	3/4	3	1 3/8	7/8
PC2516XT	2 1/2 X 16	23	3000	FULL PSI	24	1 3/8	3/16	#8 SAE	1	3/8	3 1/2	3/4	3	1 3/8	7/8
PC2518XT	2 1/2 X 18	25	3000	FULL PSI	26	1 3/8	3/16	#8 SAE	1	3/8	3 1/2	3/4	3	1 3/8	7/8
PC2520XT	2 1/2 X 20	26	3000	FULL PSI	28	1 3/8	3/16	#8 SAE	1	3/8	3 1/2	3/4	3	1 3/8	7/8
PC2524XT	2 1/2 X 24	30	3000	12,185	32	1 3/8	3/16	#8 SAE	1	3/8	3 1/2	3/4	3	1 3/8	7/8
PC2530XT	2 1/2 X 30	35	3000	8,314	38	1 3/8	3/16	#8 SAE	1	3/8	3 1/2	3/4	3	1 3/8	7/8
PC3006XT	3 X 6	18	3000	FULL PSI	14	1 1/2	3/16	#8 SAE	1	3/8	3 1/4	3/4	3 1/2	1 1/2	1 3/16
PC3008XT	3 X 8	20	3000	FULL PSI	16	1 1/2	3/16	#8 SAE	1	3/8	3 1/4	3/4	3 1/2	1 1/2	1 3/16
PC3010XT	3 X 10	22	3000	FULL PSI	18	1 1/2	3/16	#8 SAE	1	3/8	3 1/4	3/4	3 1/2	1 1/2	1 3/16
PC3012XT	3 X 12	24	3000	FULL PSI	20	1 1/2	3/16	#8 SAE	1	3/8	3 1/4	3/4	3 1/2	1 1/2	1 3/16
PC3014XT	3 X 14	27	3000	FULL PSI	22	1 1/2	3/16	#8 SAE	1	3/8	3 1/4	3/4	3 1/2	1 1/2	1 3/16
PC3016XT	3 X 16	29	3000	FULL PSI	24	1 1/2	3/16	#8 SAE	1	3/8	3 1/4	3/4	3 1/2	1 1/2	1 3/16
PC3018XT	3 X 18	31	3000	FULL PSI	26	1 1/2	3/16	#8 SAE	1	3/8	3 1/4	3/4	3 1/2	1 1/2	1 3/16
PC3020XT	3 X 20	33	3000	FULL PSI	28	1 1/2	3/16	#8 SAE	1	3/8	3 1/4	3/4	3 1/2	1 1/2	1 3/16
PC3024XT	3 X 24	37	3000	17,571	32	1 1/2	3/16	#8 SAE	1	3/8	3 1/4	3/4	3 1/2	1 1/2	1 3/16
PC3030XT	3 X 30	43	3000	11,971	38	1 1/2	3/16	#8 SAE	1	3/8	3 1/4	3/4	3 1/2	1 1/2	1 3/16
PC3032XT	3 X 32	45	3000	10,690	40	1 1/2	3/16	#8 SAE	1	3/8	3 1/4	3/4	3 1/2	1 1/2	1 3/16
PC3036XT	3 X 36	49	3000	8,677	44	1 1/2	3/16	#8 SAE	1	3/8	3 1/4	3/4	3 1/2	1 1/2	1 3/16
PC3040XT	3 X 40	53	3000	7,182	48	1 1/2	3/16	#8 SAE	1	3/8	3 1/4	3/4	3 1/2	1 1/2	1 3/16
PC3048XT	3 X 48	62	3000	5,155	56	1 1/2	3/16	#8 SAE	1	3/8	3 1/4	3/4	3 1/2	1 1/2	1 3/16
PC3506XT	3 1/2 X 6	24	3000	FULL PSI	14	1 3/4	3/16	#8 SAE	1 1/4	5/8	3	1	4	1 3/4	1 3/16
PC3508XT	3 1/2 X 8	27	3000	FULL PSI	16	1 3/4	3/16	#8 SAE	1 1/4	5/8	3	1	4	1 3/4	1 3/16
PC3510XT	3 1/2 X 10	29	3000	FULL PSI	18	1 3/4	3/16	#8 SAE	1 1/4	5/8	3	1	4	1 3/4	1 3/16
PC3512XT	3 1/2 X 12	32	3000	FULL PSI	20	1 3/4	3/16	#8 SAE	1 1/4	5/8	3	1	4	1 3/4	1 3/16
PC3514XT	3 1/2 X 14	35	3000	FULL PSI	22	1 3/4	3/16	#8 SAE	1 1/4	5/8	3	1	4	1 3/4	1 3/16
PC3516XT	3 1/2 X 16	37	3000	FULL PSI	24	1 3/4	3/16	#8 SAE	1 1/4	5/8	3	1	4	1 3/4	1 3/16
PC3518XT	3 1/2 X 18	40	3000	FULL PSI	26	1 3/4	3/16	#8 SAE	1 1/4	5/8	3	1	4	1 3/4	1 3/16
PC3520XT	3 1/2 X 20	42	3000	FULL PSI	28	1 3/4	3/16	#8 SAE	1 1/4	5/8	3	1	4	1 3/4	1 3/16
PC3524XT	3 1/2 X 24	48	3000	FULL PSI	32	1 3/4	3/16	#8 SAE	1 1/4	5/8	3	1	4	1 3/4	1 3/16
PC3530XT	3 1/2 X 30	55	3000	22,150	38	1 3/4	3/16	#8 SAE	1 1/4	5/8	3	1	4	1 3/4	1 3/16
PC3532XT	3 1/2 X 32	58	3000	19,772	40	1 3/4	3/16	#8 SAE	1 1/4	5/8	3	1	4	1 3/4	1 3/16
PC3536XT	3 1/2 X 36	63	3000	16,034	44	1 3/4	3/16	#8 SAE	1 1/4	5/8	3	1	4	1 3/4	1 3/16
PC3540XT	3 1/2 X 40	68	3000	13,264	48	1 3/4	3/16	#8 SAE	1 1/4	5/8	3	1	4	1 3/4	1 3/16
PC3542XT	3 1/2 X 42	71	3000	12,141	50	1 3/4	3/16	#8 SAE	1 1/4	5/8	3	1	4	1 3/4	1 3/16
PC3548XT	3 1/2 X 48	79	3000	9,511	56	1 3/4	3/16	#8 SAE	1 1/4	5/8	3	1	4	1 3/4	1 3/16

Continued on next page

* Frequently stocked items



THE MAGNUM LINE

3000 PSI

THE "MAGNUM" Welded-DA-Heavy Duty-Crosstube

Continued from C9

Rods are sized for a maximum safe push load (2:1 safety factor) given in the table. This is based on the pin configuration shown with no center support.

Model No.	Style	Wt.	PSI	Column Load (Lbs.)	Retract	Rod. Dia	A	B	D	E	H	K	L1	L2	R
PC4008XT	4 X 8	36	3000	FULL PSI	17	2	7/32	#10 SAE	1 1/4	25/32	3 27/32	1	4 1/2	2	1 5/16
PC4012XT	4 X 12	43	3000	FULL PSI	21	2	7/32	#10 SAE	1 1/4	25/32	3 27/32	1	4 1/2	2	1 5/16
PC4016XT	4 X 16	50	3000	FULL PSI	25	2	7/32	#10 SAE	1 1/4	25/32	3 27/32	1	4 1/2	2	1 5/16
PC4020XT	4 X 20	56	3000	FULL PSI	29	2	7/32	#10 SAE	1 1/4	25/32	3 27/32	1	4 1/2	2	1 5/16
PC4024XT	4 X 24	63	3000	FULL PSI	33	2	7/32	#10 SAE	1 1/4	25/32	3 27/32	1	4 1/2	2	1 5/16
PC4030XT	4 X 30	73	3000	36,361	39	2	7/32	#10 SAE	1 1/4	25/32	3 27/32	1	4 1/2	2	1 5/16
PC4032XT	4 X 32	77	3000	32,527	41	2	7/32	#10 SAE	1 1/4	25/32	3 27/32	1	4 1/2	2	1 5/16
PC4036XT	4 X 36	84	3000	26,476	45	2	7/32	#10 SAE	1 1/4	25/32	3 27/32	1	4 1/2	2	1 5/16
PC4040XT	4 X 40	91	3000	21,970	49	2	7/32	#10 SAE	1 1/4	25/32	3 27/32	1	4 1/2	2	1 5/16
PC4042XT	4 X 42	94	3000	20,136	51	2	7/32	#10 SAE	1 1/4	25/32	3 27/32	1	4 1/2	2	1 5/16
PC4048XT	4 X 48	104	3000	15,828	57	2	7/32	#10 SAE	1 1/4	25/32	3 27/32	1	4 1/2	2	1 5/16
PC4060XT	4 X 60	125	3000	10,516	69	2	7/32	#10 SAE	1 1/4	25/32	3 27/32	1	4 1/2	2	1 5/16
*PC5008XT	5 X 8	73	3000	FULL PSI	19	2.5	5/16	#12	1 1/2	1 1/8	4	1 1/4	5 3/4	4	1 13/32
*PC5012XT	5 X 12	84	3000	FULL PSI	23	2.5	5/16	#12	1 1/2	1 1/8	4	1 1/4	5 3/4	4	1 13/32
*PC5016XT	5 X 16	96	3000	FULL PSI	27	2.5	5/16	#12	1 1/2	1 1/8	4	1 1/4	5 3/4	4	1 13/32
*PC5020XT	5 X 20	108	3000	FULL PSI	31	2.5	5/16	#12	1 1/2	1 1/8	4	1 1/4	5 3/4	4	1 13/32
*PC5024XT	5 X 24	120	3000	FULL PSI	35	2.5	5/16	#12	1 1/2	1 1/8	4	1 1/4	5 3/4	4	1 13/32
*PC5030XT	5 X 30	138	3000	FULL PSI	41	2.5	5/16	#12	1 1/2	1 1/8	4	1 1/4	5 3/4	4	1 13/32
*PC5036XT	5 X 36	155	3000	FULL PSI	47	2.5	5/16	#12	1 1/2	1 1/8	4	1 1/4	5 3/4	4	1 13/32
*PC5048XT	5 X 48	191	3000	39,125	59	2.5	5/16	#12	1 1/2	1 1/8	4	1 1/4	5 3/4	4	1 13/32
PC5050XT	5 X 50	195	3000	36,900	61	2.5	5/16	#12	1 1/2	1 1/8	4	1 1/4	5 3/4	4	1 13/32
PC5054XT	5 X 54	210	3000	32,100	65	2.5	5/16	#12	1 1/2	1 1/8	4	1 1/4	5 3/4	4	1 13/32
PC5057XT	5 X 57	215	3000	29,075	68	2.5	5/16	#12	1 1/2	1 1/8	4	1 1/4	5 3/4	4	1 13/32
*PC5060XT	5 X 60	226	3000	26,000	71	2.5	5/16	#12	1 1/2	1 1/8	4	1 1/4	5 3/4	4	1 13/32
PC5064XT	5 X 64	235	3000	23,500	75	2.5	5/16	#12	1 1/2	1 1/8	4	1 1/4	5 3/4	4	1 13/32
PC5066XT	5 X 66	245	3000	22,100	77	2.5	5/16	#12	1 1/2	1 1/8	4	1 1/4	5 3/4	4	1 13/32
PC5071XT	5 X 71	255	3000	19,300	82	2.5	5/16	#12	1 1/2	1 1/8	4	1 1/4	5 3/4	4	1 13/32
PC5072XT	5 X 72	260	3000	18,800	83	2.5	5/16	#12	1 1/2	1 1/8	4	1 1/4	5 3/4	4	1 13/32
PC5078XT	5 X 78	280	3000	16,000	89	2.5	5/16	#12	1 1/2	1 1/8	4	1 1/4	5 3/4	4	1 13/32
PC6008XT	6 X 8	100	3000	FULL PSI	19	3	1/4	#12	1 1/2	1 5/16	2 1/16	1 1/4	6 3/4	4	1 13/32
PC6012XT	6 X 12	110	3000	FULL PSI	23	3	1/4	#12	1 1/2	1 5/16	2 1/16	1 1/4	6 3/4	4	1 13/32
PC6016XT	6 X 16	125	3000	FULL PSI	27	3	1/4	#12	1 1/2	1 5/16	2 1/16	1 1/4	6 3/4	4	1 13/32
PC6024XT	6 X 24	150	3000	FULL PSI	35	3	1/4	#12	1 1/2	1 5/16	2 1/16	1 1/4	6 3/4	4	1 13/32
PC6030XT	6 X 30	170	3000	FULL PSI	41	3	1/4	#12	1 1/2	1 5/16	2 1/16	1 1/4	6 3/4	4	1 13/32
PC6036XT	6 X 36	190	3000	FULL PSI	47	3	1/4	#12	1 1/2	1 5/16	2 1/16	1 1/4	6 3/4	4	1 13/32
*PC6048XT	6 X 48	240	3000	83,000	59	3	1/4	#12	1 1/2	1 5/16	2 1/16	1 1/4	6 3/4	4	1 13/32
PC6050XT	6 X 50	250	3000	77,200	61	3	1/4	#12	1 1/2	1 5/16	2 1/16	1 1/4	6 3/4	4	1 13/32
PC6054XT	6 X 54	265	3000	66,900	65	3	1/4	#12	1 1/2	1 5/16	2 1/16	1 1/4	6 3/4	4	1 13/32
PC6057XT	6 X 57	270	3000	60,500	68	3	1/4	#12	1 1/2	1 5/16	2 1/16	1 1/4	6 3/4	4	1 13/32
PC6060XT	6 X 60	290	3000	55,000	71	3	1/4	#12	1 1/2	1 5/16	2 1/16	1 1/4	6 3/4	4	1 13/32
PC6064XT	6 X 64	305	3000	48,700	75	3	1/4	#12	1 1/2	1 5/16	2 1/16	1 1/4	6 3/4	4	1 13/32
PC6066XT	6 X 66	315	3000	46,000	77	3	1/4	#12	1 1/2	1 5/16	2 1/16	1 1/4	6 3/4	4	1 13/32
PC6071XT	6 X 71	335	3000	40,100	82	3	1/4	#12	1 1/2	1 5/16	2 1/16	1 1/4	6 3/4	4	1 13/32
PC6072XT	6 X 72	340	3000	39,000	83	3	1/4	#12	1 1/2	1 5/16	2 1/16	1 1/4	6 3/4	4	1 13/32
PC6078XT	6 X 78	370	3000	33,500	89	3	1/4	#12	1 1/2	1 5/16	2 1/16	1 1/4	6 3/4	4	1 13/32

* Frequently stocked items

Magnum 5" and 6" cylinder cross-reference to Gladiator Line

Any Magnum 5 & 6 inch bore cylinder, with a stroke of less than 48 inches, has the same correlating retract of the Gladiator Line. For cylinders with 48 inches of stroke or longer, see the chart below for a cross-reference.

Gladiator Line	Stroke	Retract	Magnum Line (Stroke Match)	Stroke	Retract	Magnum Line (Retract Match)	Stroke	Retract
SAE-21048	48	61	PC5048XT	48	59	PC5050XT	50	61
SAE-21054	54	68	PC5054XT	54	65	PC5057XT	57	68
SAE-21060	60	75	PC5060XT	60	71	PC5064XT	64	75
SAE-21066	66	82	PC5066XT	66	77	PC5071XT	71	82
SAE-21072	72	89	PC5072XT	72	83	PC5074XT	78	89
SAE-22048	48	61	PC6048XT	48	59	PC6050XT	50	61
SAE-22054	54	68	PC6054XT	54	65	PC6057XT	57	68
SAE-22060	60	75	PC6060XT	60	71	PC6064XT	64	75
SAE-22066	66	82	PC6066XT	66	77	PC6071XT	71	82
SAE-22072	72	89	PC6072XT	72	83	PC6074XT	78	89

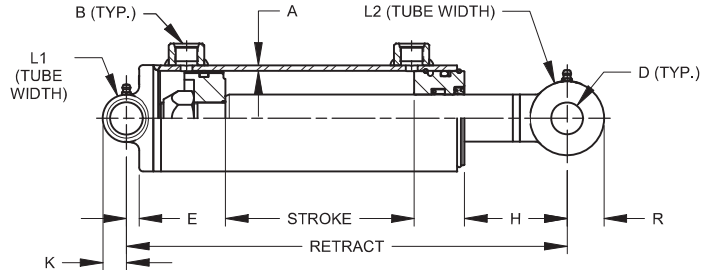
Reference engineering drawing for column load ratings.

THE "MAGNUM" Welded-DA-Heavy Duty-Crosstube (Medium)



FEATURES:

- Double Acting
- Heavy duty welded construction
- Chromed, ground, & polished rod
- Unitized piston
- Crosstube cylinders
- Crosstube end fitting with grease zerks
- Color is gloss black
- 3000 PSI maximum operating pressure
- Use of stroke controls not applicable to Magnum cylinders



Rods are sized for a maximum safe push load (2:1 safety factor) given in the table. This is based on the pin configuration shown with no center support.

Model No.	Style	Wt.	PSI	Column Load (Lbs.)	Retract	Rod. Dia.	A	B	D	E	H	K	L1	L2	R
PC2006XM	2 X 6	12	3000	FULL PSI	14	1 1/8	3/16	#8 SAE	1	-	3 9/32	1	2 3/8	2	3/4
PC2008XM	2 X 8	13	3000	FULL PSI	16	1 1/8	3/16	#8 SAE	1	-	3 9/32	1	2 3/8	2	3/4
PC2010XM	2 X 10	15	3000	FULL PSI	18	1 1/8	3/16	#8 SAE	1	-	3 9/32	1	2 3/8	2	3/4
PC2012XM	2 X 12	16	3000	FULL PSI	20	1 1/8	3/16	#8 SAE	1	-	3 9/32	1	2 3/8	2	3/4
PC2014XM	2 X 14	17	3000	FULL PSI	22	1 1/8	3/16	#8 SAE	1	-	3 9/32	1	2 3/8	2	3/4
PC2016XM	2 X 16	19	3000	FULL PSI	24	1 1/8	3/16	#8 SAE	1	-	3 9/32	1	2 3/8	2	3/4
PC2018XM	2 X 18	20	3000	8,939	26	1 1/8	3/16	#8 SAE	1	-	3 9/32	1	2 3/8	2	3/4
PC2020XM	2 X 20	21	3000	7,533	28	1 1/8	3/16	#8 SAE	1	-	3 9/32	1	2 3/8	2	3/4
PC2024XM	2 X 24	24	3000	5,559	32	1 1/8	3/16	#8 SAE	1	-	3 9/32	1	2 3/8	2	3/4
PC2030XM	2 X 30	28	3000	3,788	38	1 1/8	3/16	#8 SAE	1	-	3 9/32	1	2 3/8	2	3/4
PC2506XM	2 1/2 X 6	14	3000	FULL PSI	14	1 3/8	3/16	#8 SAE	1	13/32	3 17/32	25/32	3	2	25/32
PC2508XM	2 1/2 X 8	16	3000	FULL PSI	16	1 3/8	3/16	#8 SAE	1	13/32	3 17/32	25/32	3	2	25/32
PC2510XM	2 1/2 X 10	17	3000	FULL PSI	18	1 3/8	3/16	#8 SAE	1	13/32	3 17/32	25/32	3	2	25/32
PC2512XM	2 1/2 X 12	19	3000	FULL PSI	20	1 3/8	3/16	#8 SAE	1	13/32	3 17/32	25/32	3	2	25/32
PC2514XM	2 1/2 X 14	20	3000	FULL PSI	22	1 3/8	3/16	#8 SAE	1	13/32	3 17/32	25/32	3	2	25/32
PC2516XM	2 1/2 X 16	22	3000	FULL PSI	24	1 3/8	3/16	#8 SAE	1	13/32	3 17/32	25/32	3	2	25/32
PC2518XM	2 1/2 X 18	24	3000	FULL PSI	26	1 3/8	3/16	#8 SAE	1	13/32	3 17/32	25/32	3	2	25/32
PC2520XM	2 1/2 X 20	25	3000	FULL PSI	28	1 3/8	3/16	#8 SAE	1	13/32	3 17/32	25/32	3	2	25/32
PC2524XM	2 1/2 X 24	28	3000	12,124	32	1 3/8	3/16	#8 SAE	1	13/32	3 17/32	25/32	3	2	25/32
PC2530XM	2 1/2 X 30	33	3000	8,280	38	1 3/8	3/16	#8 SAE	1	13/32	3 17/32	25/32	3	2	25/32
PC3006XM	3 X 6	19	3000	FULL PSI	14	1 1/2	3/16	#8 SAE	1	13/32	3 1/4	13/16	3 1/2	2	29/32
PC3008XM	3 X 8	21	3000	FULL PSI	16	1 1/2	3/16	#8 SAE	1	13/32	3 1/4	13/16	3 1/2	2	29/32
PC3010XM	3 X 10	22	3000	FULL PSI	18	1 1/2	3/16	#8 SAE	1	13/32	3 1/4	13/16	3 1/2	2	29/32
PC3012XM	3 X 12	24	3000	FULL PSI	20	1 1/2	3/16	#8 SAE	1	13/32	3 1/4	13/16	3 1/2	2	29/32
PC3014XM	3 X 14	26	3000	FULL PSI	22	1 1/2	3/16	#8 SAE	1	13/32	3 1/4	13/16	3 1/2	2	29/32
PC3016XM	3 X 16	28	3000	FULL PSI	24	1 1/2	3/16	#8 SAE	1	13/32	3 1/4	13/16	3 1/2	2	29/32
PC3018XM	3 X 18	30	3000	FULL PSI	26	1 1/2	3/16	#8 SAE	1	13/32	3 1/4	13/16	3 1/2	2	29/32
PC3020XM	3 X 20	32	3000	FULL PSI	28	1 1/2	3/16	#8 SAE	1	13/32	3 1/4	13/16	3 1/2	2	29/32
PC3024XM	3 X 24	36	3000	17,571	32	1 1/2	3/16	#8 SAE	1	13/32	3 1/4	13/16	3 1/2	2	29/32
PC3030XM	3 X 30	42	3000	11,973	38	1 1/2	3/16	#8 SAE	1	13/32	3 1/4	13/16	3 1/2	2	29/32
PC3032XM	3 X 32	43	3000	10,687	40	1 1/2	3/16	#8 SAE	1	13/32	3 1/4	13/16	3 1/2	2	29/32
PC3036XM	3 X 36	47	3000	8,677	44	1 1/2	3/16	#8 SAE	1	13/32	3 1/4	13/16	3 1/2	2	29/32
PC3040XM	3 X 40	51	3000	7,182	48	1 1/2	3/16	#8 SAE	1	13/32	3 1/4	13/16	3 1/2	2	29/32
PC3048XM	3 X 48	61	3000	5,155	56	1 1/2	3/16	#8 SAE	1	13/32	3 1/4	13/16	3 1/2	2	29/32
PC3506XM	3 1/2 X 6	22	3000	FULL PSI	14	1 3/4	3/16	#8 SAE	1 1/4	5/8	3	1 1/32	4	2 1/4	1 3/32
PC3508XM	3 1/2 X 8	24	3000	FULL PSI	16	1 3/4	3/16	#8 SAE	1 1/4	5/8	3	1 1/32	4	2 1/4	1 3/32
PC3510XM	3 1/2 X 10	26	3000	FULL PSI	18	1 3/4	3/16	#8 SAE	1 1/4	5/8	3	1 1/32	4	2 1/4	1 3/32
*PC3512XM	3 1/2 X 12	28	3000	FULL PSI	20	1 3/4	3/16	#8 SAE	1 1/4	5/8	3	1 1/32	4	2 1/4	1 3/32
PC3514XM	3 1/2 X 14	30	3000	FULL PSI	22	1 3/4	3/16	#8 SAE	1 1/4	5/8	3	1 1/32	4	2 1/4	1 3/32
PC3516XM	3 1/2 X 16	32	3000	FULL PSI	24	1 3/4	3/16	#8 SAE	1 1/4	5/8	3	1 1/32	4	2 1/4	1 3/32
PC3518XM	3 1/2 X 18	35	3000	FULL PSI	26	1 3/4	3/16	#8 SAE	1 1/4	5/8	3	1 1/32	4	2 1/4	1 3/32
*PC3520XM	3 1/2 X 20	37	3000	FULL PSI	28	1 3/4	3/16	#8 SAE	1 1/4	5/8	3	1 1/32	4	2 1/4	1 3/32
*PC3524XM	3 1/2 X 24	41	3000	FULL PSI	32	1 3/4	3/16	#8 SAE	1 1/4	5/8	3	1 1/32	4	2 1/4	1 3/32
PC3530XM	3 1/2 X 30	47	3000	22,050	38	1 3/4	3/16	#8 SAE	1 1/4	5/8	3	1 1/32	4	2 1/4	1 3/32
PC3532XM	3 1/2 X 32	49	3000	19,693	40	1 3/4	3/16	#8 SAE	1 1/4	5/8	3	1 1/32	4	2 1/4	1 3/32
*PC3536XM	3 1/2 X 36	53	3000	15,980	44	1 3/4	3/16	#8 SAE	1 1/4	5/8	3	1 1/32	4	2 1/4	1 3/32
PC3540XM	3 1/2 X 40	57	3000	13,221	48	1 3/4	3/16	#8 SAE	1 1/4	5/8	3	1 1/32	4	2 1/4	1 3/32
PC3542XM	3 1/2 X 42	59	3000	12,103	50	1 3/4	3/16	#8 SAE	1 1/4	5/8	3	1 1/32	4	2 1/4	1 3/32
PC3548XM	3 1/2 X 48	68	3000	9,485	56	1 3/4	3/16	#8 SAE	1 1/4	5/8	3	1 1/32	4	2 1/4	1 3/32
*PC4008XM	4 X 8	36	3000	FULL PSI	17	2	7/32	#10 SAE	1 1/4	25/32	3 13/16	1 1/16	4 1/2	2 1/2	1 5/16
*PC4012XM	4 X 12	43	3000	FULL PSI	21	2	7/32	#10 SAE	1 1/4	25/32	3 13/16	1 1/16	4 1/2	2 1/2	1 5/16
*PC4016XM	4 X 16	50	3000	FULL PSI	25	2	7/32	#10 SAE	1 1/4	25/32	3 13/16	1 1/16	4 1/2	2 1/2	1 5/16
*PC4020XM	4 X 20	56	3000	FULL PSI	29	2	7/32	#10 SAE	1 1/4	25/32	3 13/16	1 1/16	4 1/2	2 1/2	1 5/16
*PC4024XM	4 X 24	63	3000	FULL PSI	33	2	7/32	#10 SAE	1 1/4	25/32	3 13/16	1 1/16	4 1/2	2 1/2	1 5/16
*PC4030XM	4 X 30	73	3000	36,361	39	2	7/32	#10 SAE	1 1/4	25/32	3 13/16	1 1/16	4 1/2	2 1/2	1 5/16
*PC4032XM	4 X 32	77	3000	32,527	41	2	7/32	#10 SAE	1 1/4	25/32	3 13/16	1 1/16	4 1/2	2 1/2	1 5/16
*PC4036XM	4 X 36	84	3000	26,476	45	2	7/32	#10 SAE	1 1/4	25/32	3 13/16	1 1/16	4 1/2	2 1/2	1 5/16
PC4040XM	4 X 40	91	3000	21,970	49	2	7/32	#10 SAE	1 1/4	25/32	3 13/16	1 1/16	4 1/2	2 1/2	1 5/16
PC4042XM	4 X 42	94	3000	20,136	51	2	7/32	#10 SAE	1 1/4	25/32	3 13/16	1 1/16	4 1/2	2 1/2	1 5/16
*PC4048XM	4 X 48	104	3000	15,828	57	2	7/32	#10 SAE	1 1/4	25/32	3 13/16	1 1/16	4 1/2	2 1/2	1 5/16
*PC4060XM	4 X 60	125	3000	10,516	69	2	7/32	#10 SAE	1 1/4	25/32	3 13/16	1 1/16	4 1/2	2 1/2	1 5/16

* Frequently stocked items



THE MAGNUM LINE

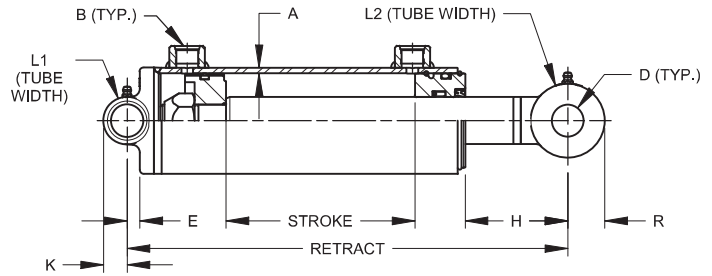
3000 PSI

THE "MAGNUM" Welded-DA-Heavy Duty-Crosstube (Long)



FEATURES:

- Double Acting
- Heavy duty welded construction
- Chromed, ground, & polished rod
- Unitized piston
- Crosstube cylinders
- Crosstube end fitting with grease zerks
- Color is gloss black
- 3000 PSI maximum operating pressure
- Use of stroke controls not applicable to Magnum cylinders



Rods are sized for a maximum safe push load (2:1 safety factor) given in the table. This is based on the pin configuration shown with no center support.

Model No.	Style	Wt.	PSI	Column Load (Lbs.)	Retract	Rod Dia.	A	B	D	E	H	K	L1	L2	R
PC2006XL	2 X 6	12	3000	FULL PSI	14	1 1/8	3/16	#8 SAE	1	-	3 9/32	1	2 3/8	2 1/4	3/4
PC2008XL	2 X 8	13	3000	FULL PSI	16	1 1/8	3/16	#8 SAE	1	-	3 9/32	1	2 3/8	2 1/4	3/4
PC2010XL	2 X 10	15	3000	FULL PSI	18	1 1/8	3/16	#8 SAE	1	-	3 9/32	1	2 3/8	2 1/4	3/4
PC2012XL	2 X 12	16	3000	FULL PSI	20	1 1/8	3/16	#8 SAE	1	-	3 9/32	1	2 3/8	2 1/4	3/4
PC2014XL	2 X 14	17	3000	FULL PSI	22	1 1/8	3/16	#8 SAE	1	-	3 9/32	1	2 3/8	2 1/4	3/4
PC2016XL	2 X 16	19	3000	FULL PSI	24	1 1/8	3/16	#8 SAE	1	-	3 9/32	1	2 3/8	2 1/4	3/4
PC2018XL	2 X 18	20	3000	8,939	26	1 1/8	3/16	#8 SAE	1	-	3 9/32	1	2 3/8	2 1/4	3/4
PC2020XL	2 X 20	21	3000	7,533	28	1 1/8	3/16	#8 SAE	1	-	3 9/32	1	2 3/8	2 1/4	3/4
PC2024XL	2 X 24	24	3000	5,559	32	1 1/8	3/16	#8 SAE	1	-	3 9/32	1	2 3/8	2 1/4	3/4
PC2030XL	2 X 30	28	3000	3,788	38	1 1/8	3/16	#8 SAE	1	-	3 9/32	1	2 3/8	2 1/4	3/4
PC2506XL	2 1/2 X 6	14	3000	FULL PSI	14	1 3/8	3/16	#8 SAE	1	13/32	3 17/32	25/32	3	2 1/4	25/32
*PC2508XL	2 1/2 X 8	16	3000	FULL PSI	16	1 3/8	3/16	#8 SAE	1	13/32	3 17/32	25/32	3	2 1/4	25/32
PC2510XL	2 1/2 X 10	17	3000	FULL PSI	18	1 3/8	3/16	#8 SAE	1	13/32	3 17/32	25/32	3	2 1/4	25/32
PC2512XL	2 1/2 X 12	19	3000	FULL PSI	20	1 3/8	3/16	#8 SAE	1	13/32	3 17/32	25/32	3	2 1/4	25/32
PC2514XL	2 1/2 X 14	20	3000	FULL PSI	22	1 3/8	3/16	#8 SAE	1	13/32	3 17/32	25/32	3	2 1/4	25/32
PC2516XL	2 1/2 X 16	22	3000	FULL PSI	24	1 3/8	3/16	#8 SAE	1	13/32	3 17/32	25/32	3	2 1/4	25/32
*PC2518XL	2 1/2 X 18	24	3000	FULL PSI	26	1 3/8	3/16	#8 SAE	1	13/32	3 17/32	25/32	3	2 1/4	25/32
*PC2520XL	2 1/2 X 20	25	3000	FULL PSI	28	1 3/8	3/16	#8 SAE	1	13/32	3 17/32	25/32	3	2 1/4	25/32
*PC2524XL	2 1/2 X 24	28	3000	12,124	32	1 3/8	3/16	#8 SAE	1	13/32	3 17/32	25/32	3	2 1/4	25/32
PC2530XL	2 1/2 X 30	33	3000	8,280	38	1 3/8	3/16	#8 SAE	1	13/32	3 17/32	25/32	3	2 1/4	25/32
PC3006XL	3 X 6	19	3000	FULL PSI	14	1 1/2	3/16	#8 SAE	1	13/32	3 1/4	13/16	3 1/2	2 1/4	29/32
*PC3008XL	3 X 8	21	3000	FULL PSI	16	1 1/2	3/16	#8 SAE	1	13/32	3 1/4	13/16	3 1/2	2 1/4	29/32
PC3010XL	3 X 10	22	3000	FULL PSI	18	1 1/2	3/16	#8 SAE	1	13/32	3 1/4	13/16	3 1/2	2 1/4	29/32
*PC3012XL	3 X 12	24	3000	FULL PSI	20	1 1/2	3/16	#8 SAE	1	13/32	3 1/4	13/16	3 1/2	2 1/4	29/32
PC3014XL	3 X 14	26	3000	FULL PSI	22	1 1/2	3/16	#8 SAE	1	13/32	3 1/4	13/16	3 1/2	2 1/4	29/32
*PC3016XL	3 X 16	28	3000	FULL PSI	24	1 1/2	3/16	#8 SAE	1	13/32	3 1/4	13/16	3 1/2	2 1/4	29/32
*PC3018XL	3 X 18	30	3000	FULL PSI	26	1 1/2	3/16	#8 SAE	1	13/32	3 1/4	13/16	3 1/2	2 1/4	29/32
*PC3020XL	3 X 20	32	3000	FULL PSI	28	1 1/2	3/16	#8 SAE	1	13/32	3 1/4	13/16	3 1/2	2 1/4	29/32
*PC3024XL	3 X 24	36	3000	17,571	32	1 1/2	3/16	#8 SAE	1	13/32	3 1/4	13/16	3 1/2	2 1/4	29/32
PC3030XL	3 X 30	42	3000	11,973	38	1 1/2	3/16	#8 SAE	1	13/32	3 1/4	13/16	3 1/2	2 1/4	29/32
PC3032XL	3 X 32	43	3000	10,687	40	1 1/2	3/16	#8 SAE	1	13/32	3 1/4	13/16	3 1/2	2 1/4	29/32
PC3036XL	3 X 36	47	3000	8,677	44	1 1/2	3/16	#8 SAE	1	13/32	3 1/4	13/16	3 1/2	2 1/4	29/32
PC3040XL	3 X 40	51	3000	7,182	48	1 1/2	3/16	#8 SAE	1	13/32	3 1/4	13/16	3 1/2	2 1/4	29/32
PC3048XL	3 X 48	61	3000	5,155	56	1 1/2	3/16	#8 SAE	1	13/32	3 1/4	13/16	3 1/2	2 1/4	29/32
PC3506XL	3 1/2 X 6	22	3000	FULL PSI	14	1 3/4	3/16	#8 SAE	1 1/4	5/8	3	1 1/32	4	2 1/2	1 3/32
PC3508XL	3 1/2 X 8	24	3000	FULL PSI	16	1 3/4	3/16	#8 SAE	1 1/4	5/8	3	1 1/32	4	2 1/2	1 3/32
PC3510XL	3 1/2 X 10	26	3000	FULL PSI	18	1 3/4	3/16	#8 SAE	1 1/4	5/8	3	1 1/32	4	2 1/2	1 3/32
PC3512XL	3 1/2 X 12	28	3000	FULL PSI	20	1 3/4	3/16	#8 SAE	1 1/4	5/8	3	1 1/32	4	2 1/2	1 3/32
PC3514XL	3 1/2 X 14	30	3000	FULL PSI	22	1 3/4	3/16	#8 SAE	1 1/4	5/8	3	1 1/32	4	2 1/2	1 3/32
PC3516XL	3 1/2 X 16	32	3000	FULL PSI	24	1 3/4	3/16	#8 SAE	1 1/4	5/8	3	1 1/32	4	2 1/2	1 3/32
PC3518XL	3 1/2 X 18	35	3000	FULL PSI	26	1 3/4	3/16	#8 SAE	1 1/4	5/8	3	1 1/32	4	2 1/2	1 3/32
PC3520XL	3 1/2 X 20	37	3000	FULL PSI	28	1 3/4	3/16	#8 SAE	1 1/4	5/8	3	1 1/32	4	2 1/2	1 3/32
PC3524XL	3 1/2 X 24	41	3000	FULL PSI	32	1 3/4	3/16	#8 SAE	1 1/4	5/8	3	1 1/32	4	2 1/2	1 3/32
PC3530XL	3 1/2 X 30	47	3000	22,050	38	1 3/4	3/16	#8 SAE	1 1/4	5/8	3	1 1/32	4	2 1/2	1 3/32
PC3532XL	3 1/2 X 32	49	3000	19,693	40	1 3/4	3/16	#8 SAE	1 1/4	5/8	3	1 1/32	4	2 1/2	1 3/32
PC3536XL	3 1/2 X 36	53	3000	15,980	44	1 3/4	3/16	#8 SAE	1 1/4	5/8	3	1 1/32	4	2 1/2	1 3/32
PC3540XL	3 1/2 X 40	57	3000	13,221	48	1 3/4	3/16	#8 SAE	1 1/4	5/8	3	1 1/32	4	2 1/2	1 3/32
PC3542XL	3 1/2 X 42	59	3000	12,103	50	1 3/4	3/16	#8 SAE	1 1/4	5/8	3	1 1/32	4	2 1/2	1 3/32
PC3548XL	3 1/2 X 48	68	3000	9,485	56	1 3/4	3/16	#8 SAE	1 1/4	5/8	3	1 1/32	4	2 1/2	1 3/32
PC4008XL	4 X 8	36	3000	FULL PSI	17	2	7/32	#10 SAE	1 1/4	25/32	3 13/16	1 1/16	4 1/2	4	1 1/8
PC4012XL	4 X 12	43	3000	FULL PSI	21	2	7/32	#10 SAE	1 1/4	25/32	3 13/16	1 1/16	4 1/2	4	1 1/8
PC4016XL	4 X 16	50	3000	FULL PSI	25	2	7/32	#10 SAE	1 1/4	25/32	3 13/16	1 1/16	4 1/2	4	1 1/8
PC4020XL	4 X 20	56	3000	FULL PSI	29	2	7/32	#10 SAE	1 1/4	25/32	3 13/16	1 1/16	4 1/2	4	1 1/8
PC4024XL	4 X 24	63	3000	FULL PSI	33	2	7/32	#10 SAE	1 1/4	25/32	3 13/16	1 1/16	4 1/2	4	1 1/8
PC4030XL	4 X 30	73	3000	36,361	39	2	7/32	#10 SAE	1 1/4	25/32	3 13/16	1 1/16	4 1/2	4	1 1/8
PC4032XL	4 X 32	77	3000	32,527	41	2	7/32	#10 SAE	1 1/4	25/32	3 13/16	1 1/16	4 1/2	4	1 1/8
PC4036XL	4 X 36	84	3000	26,476	45	2	7/32	#10 SAE	1 1/4	25/32	3 13/16	1 1/16	4 1/2	4	1 1/8
PC4040XL	4 X 40	91	3000	21,970	49	2	7/32	#10 SAE	1 1/4	25/32	3 13/16	1 1/16	4 1/2	4	1 1/8
PC4042XL	4 X 42	94	3000	20,136	51	2	7/32	#10 SAE	1 1/4	25/32	3 13/16	1 1/16	4 1/2	4	1 1/8
PC4048XL	4 X 48	104	3000	15,828	57	2	7/32	#10 SAE	1 1/4	25/32	3 13/16	1 1/16	4 1/2	4	1 1/8
PC4060XL	4 X 60	125	3000	10,516	69	2	7/32	#10 SAE	1 1/4	25/32	3 13/16	1 1/16	4 1/2	4	1 1/8

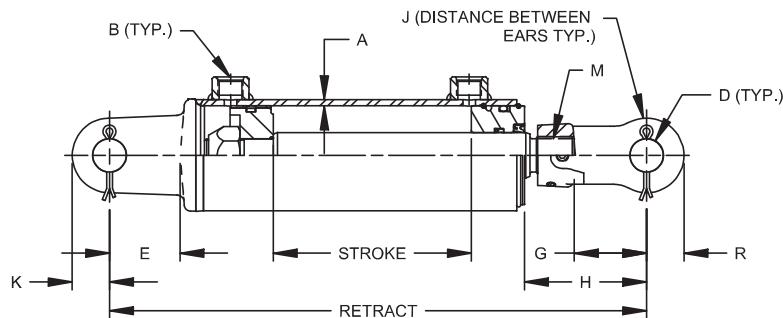
* Frequently stocked items

MODEL	ROD DIAMETER OPTIONS					A	B (SAE)	PSI
PC20	1.125	-	-	-	-	3/16	#8	3000
PC25	*1.250	1.375	-	-	-	3/16	#8	3000
PC30	*1.375	1.500	1.750	-	-	3/16	#8	3000
PC35	*1.375	*1.500	1.750	2.000	-	3/16	#8	3000
PC40	1.750	2.000	2.250	2.500	-	7/32	#10	3000
PC50	2.000	2.250	2.500	2.750	3.000	5/16	#12	3000
PC60	3.000	-	-	-	-	1/4	#12	3000

*ONLY AVAILABLE WITH ROD END CLEVIS

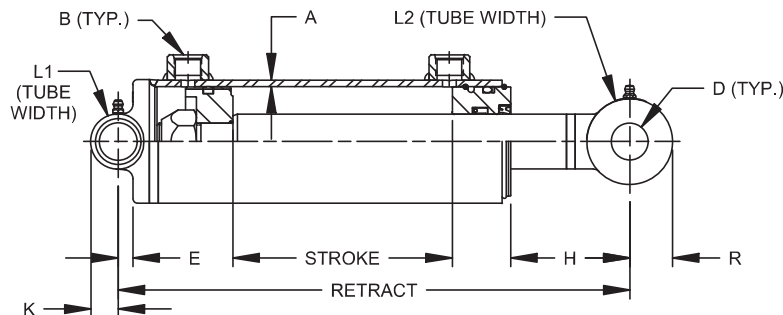
For custom configurations
contact Prince
Manufacturing Corporation
or use the Customer Portal
at www.princehyd.com.

Model	Rod Dia.	CLEVIS BASE			CLEVIS ROD					
		D	E	K	D	G	H	J	M	R
PC20xxCL	1.125	1.015	2.12	1.00	1.015	2.15	3.67	1.06	1 1/8-12	1.13
PC25xxCL	1.250	1.015	2.14	1.00	1.015	2.15	3.97	1.06	1 1/8-12	1.13
PC30xxCL	1.375	1.015	2.13	1.13	1.015	2.15	3.70	1.06	1 1/8-12	1.13
PC35xxCL	1.375	1.015	2.13	1.25	1.015	2.18	3.70	1.06	1 5/16-12	1.25
PC40xxCL	1.750	1.015	2.13	1.25	1.015	2.19	3.65	1.06	1 1/2-12	1.25
PC50xxCL	2.000	1.265	2.13	1.38	1.265	2.18	4.41	1.38	1 3/4-12	1.25



Model	Rod Dia.	CROSSTUBE BASE				CROSSTUBE ROD						
		D	E	K	L1	D	H	L2 (XT)	R (XT)	L2 (XM)	L2 (XL)	R (XL)
PC20xxXT/XM/XL	1.125	.75/1.00	-	1.00	*2.38	.75/1.00	3.29	1.500	0.75	2.000	2.250	0.75
PC25xxXT/XM/XL	1.375	.75/1.00	0.40	0.77	3.00	.75/1.00	3.53	1.380	0.88	2.000	2.250	0.78
PC30xxXT/XM/XL	1.500	1.030	0.40	0.75	3.50	1.015	3.26	1.500	1.17	2.000	2.250	0.91
PC35xxXT/XM/XL	1.750	1.00/1.265	0.63	1.02	4.00	1.00/1.265	3.01	1.750	1.17	2.250	2.500	1.10
PC40xxXT/XM/XL	2.000	1.265	0.78	1.00	4.50	1.265	3.83	2.000	1.29	2.500	4.000	1.10
PC50xxXT	2.500	1.531	1.15	1.25	5.75	1.531	4.00	4.000	1.41	-	-	1.13
PC60xxXT	3.000	1.531	1.31	1.25	6.75	1.531	2.06	4.000	1.41	-	-	-

*HOLE DRILLED THRU BASEPLATE





THE MAGNUM LINE

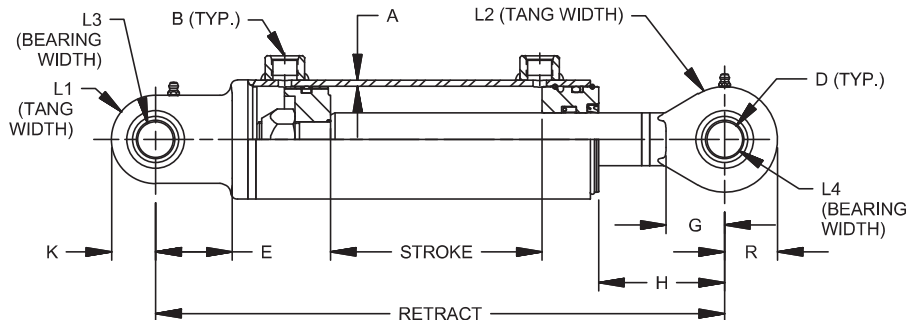
3000 PSI

MODEL	ROD DIAMETER OPTIONS					A	B (SAE)	PSI
PC20	1.125	-	-	-	-	3/16	#8	3000
PC25	*1.250	1.375	-	-	-	3/16	#8	3000
PC30	*1.375	1.500	1.750	-	-	3/16	#8	3000
PC35	*1.375	*1.500	1.750	2.000	-	3/16	#8	3000
PC40	1.750	2.000	2.250	2.500	-	7/32	#10	3000

For custom configurations contact Prince Manufacturing Corporation or use the Customer Portal at www.princehyd.com.

*ONLY AVAILABLE WITH ROD END CLEVIS

Model	Rod Dia.	SPHERICAL BASE					SPHERICAL ROD					
		D	E	K	L1	L3	D	G	H	L2	L4	R
PC20xxSP	1.125	1.000	2.20	1.15	1.00	.875	1.000	1.34	3.67	1.00	.875	1.15
PC25xxSP	1.375	1.000	2.18	1.25	1.00	.875	1.000	1.47	3.97	1.00	.875	1.25
PC30xxSP	1.500	1.000	2.20	1.25	1.00	.875	1.000	1.67	3.70	1.00	.875	1.50
PC35xxSP	1.750	1.000	2.20	1.50	1.00	.875	1.000	1.67	3.70	1.00	.875	1.50
PC40xxSP	2.000	1.250	2.38	1.50	1.00	1.09	1.250	1.79	3.52	1.00	1.09	1.70



Model	Rod Dia.	TANG BASE				TANG ROD				
		D	E	K	L1	D	G	H	L2	R
PC20xxTG	1.125	1.015	2.20	1.15	1.00	1.015	1.34	3.67	1.00	1.15
PC25xxTG	1.375	1.015	2.18	1.25	1.00	1.015	1.47	3.97	1.00	1.25
PC30xxTG	1.500	1.015	2.20	1.25	1.00	1.015	1.67	3.70	1.00	1.50
PC35xxTG	1.750	1.015	2.20	1.50	1.00	1.015	1.67	3.70	1.00	1.50
PC40xxTG	2.000	1.265	2.38	1.50	1.00	1.265	1.79	3.52	1.00	1.70

