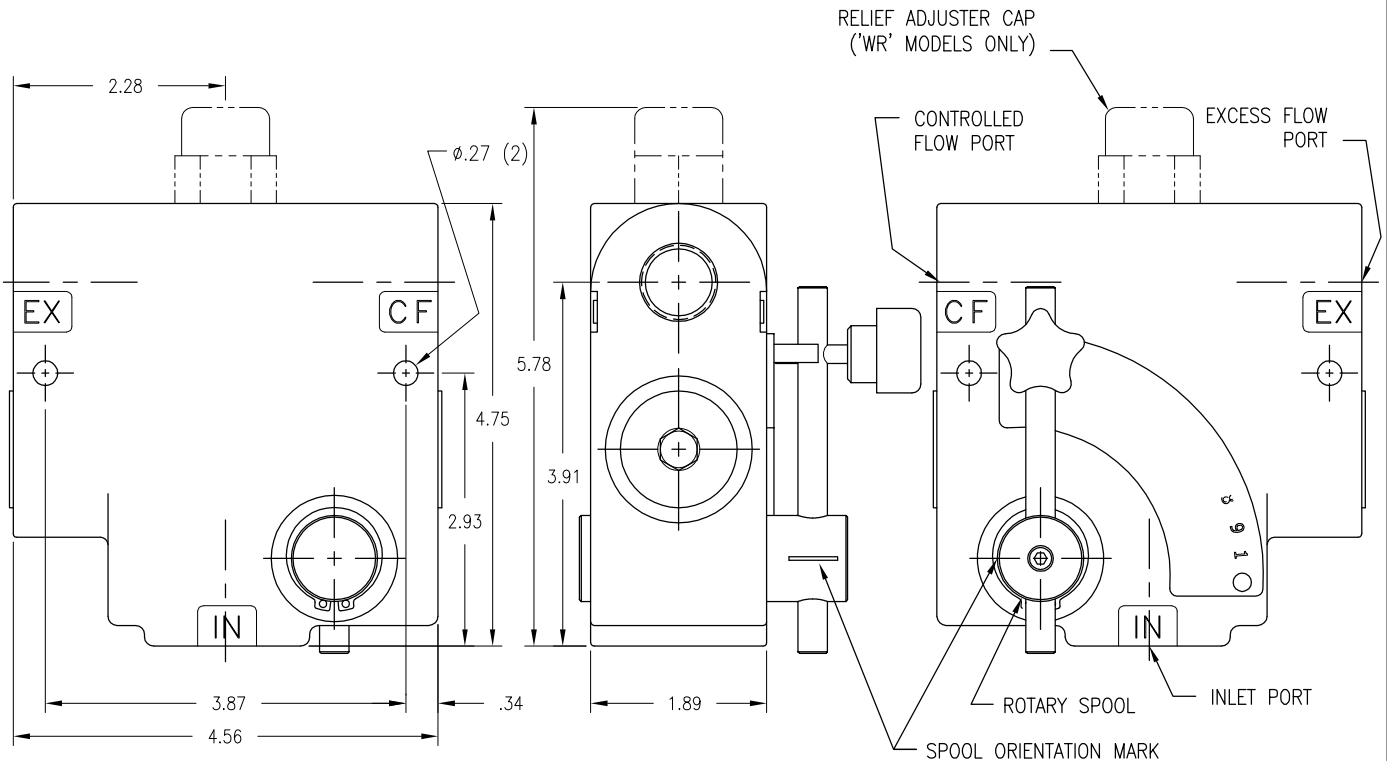


MODEL: W-1900/WR-1900



NOTE: ALL DIMENSIONS ARE FOR REFERENCE ONLY.

PART NO.:	DESCRIPTION (CONTROLLED FLOW RANGE):
W-1950-8	1/2-NPTF PORTS (0-8 GPM)
W-1908-8	#8 SAE/ORB PORTS (0-8 GPM)
W-1950-16	1/2-NPTF PORTS (0-16 GPM)
W-1975-30	3/4-NPTF PORTS (0-30 GPM)
W-1912-30	#12 SAE/ORB PORTS (0-30 GPM)
WR-1950-16	1/2-NPTF PORTS (0-16 GPM) W/ RELIEF
WR-1975-30	3/4-NPTF PORTS (0-30 GPM) W/ RELIEF

SPOOL SEAL INSTALLATION PROCEDURE:

INSTALL O-RINGS AND BACKUP IN GROOVES ON HANDLE END OF ROTARY SPOOL (BACKUP GOES TO THE OUTSIDE OF O-RING IN INNER GROOVE). SLIDE WHITE WASHER ONTO SPOOL TO THE OUTSIDE OF THE O-RING GROOVES ON HANDLE END. PUSH SPOOL THROUGH FROM HANDLE SIDE OF VALVE, JUST FAR ENOUGH TO EXPOSE O-RING GROOVES ON THE BACK SIDE. INSTALL O-RING & THEN BACKUP (TO THE OUTSIDE) IN INNER GROOVE, AND O-RING IN OUTER GROOVE. SLIDE WHITE WASHER ON AND INSTALL SNAP RING. SLIDE SPOOL BACK AND INSTALL HANDLE END SNAP RING. LUBRICATE SEALS BEFORE INSTALLATION.

RELIEF PRESSURE INFORMATION:

INLET RELIEF PROTECTION AVAILABLE ON 'WR' MODELS.
RELIEF PRESSURE PRESET AT 1500 PSI.
TO ADJUST REMOVE ACORN NUT, TURN ADJUSTING SCREW CLOCKWISE TO INCREASE PRESSURE, COUNTERCLOCKWISE TO REDUCE PRESSURE. REINSTALL ACORN NUT AFTER ADJUSTING. USE A PRESSURE GAUGE WHEN MAKING ADJUSTMENTS.

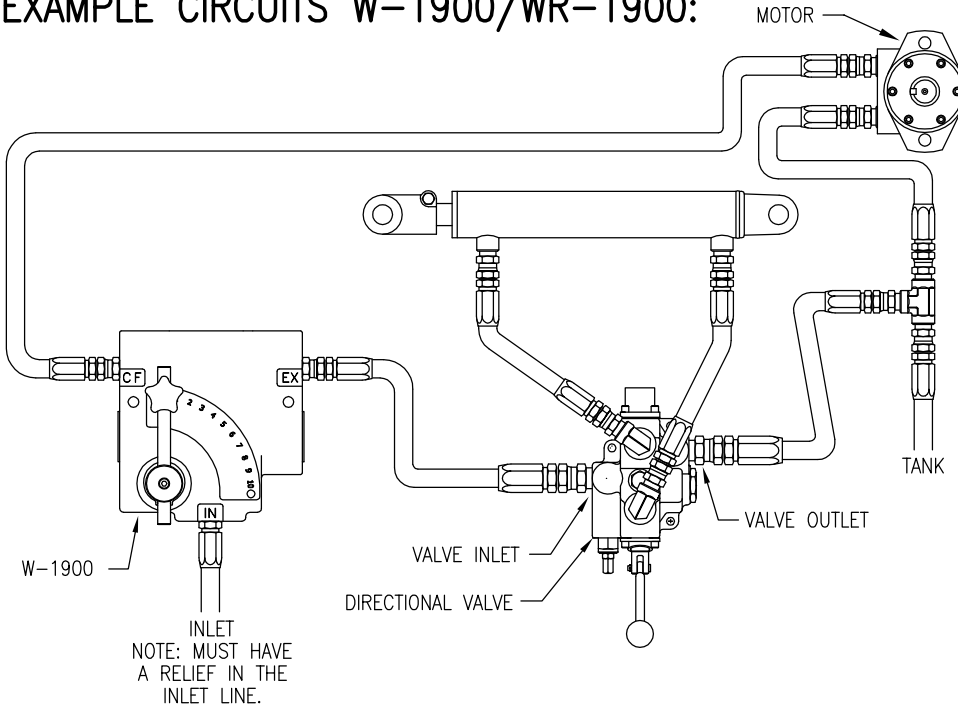
MODEL W-1900/WR-1900 KITS

PART NO.:	DESCRIPTION:
660170064	HANDLE KIT
660570004	SEAL KIT



WARNING: OVERPRESSURE MAY CAUSE SUDDEN AND UNEXPECTED FAILURE OF A COMPONENT IN THE HYDRAULIC SYSTEM RESULTING IN SERIOUS PERSONAL INJURY. ALWAYS USE A PRESSURE GAUGE WHEN ADJUSTING A RELIEF VALVE.

EXAMPLE CIRCUITS W-1900/WR-1900:



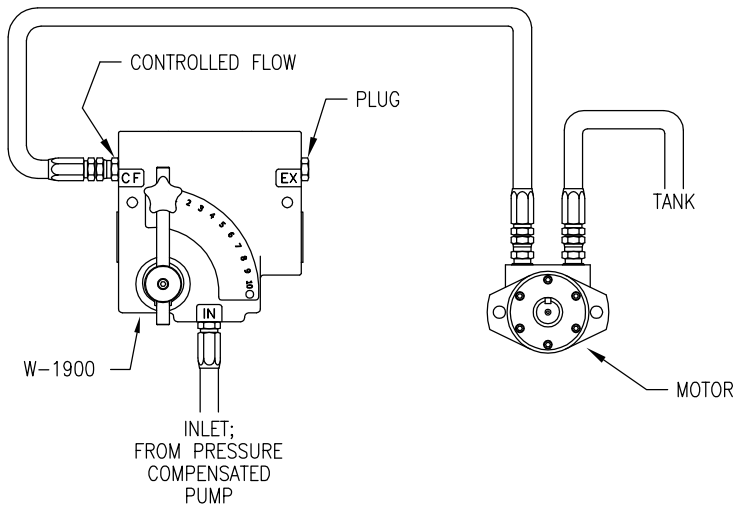
BYPASS CIRCUIT:

In this circuit oil from a source is directed into the inlet of the valve. By moving the handle the flow can be varied from zero when handle is vertical to maximum when handle is horizontal. Oil not going to the controlled flow port is bypassed to the excess flow port where it can be used to supply another circuit or returned to tank.

It should be noted that whenever these or any valve is used to bypass or restrict flow heat will be generated.

RESTRICTIVE CIRCUIT: NORMALLY USED IN CLOSED CENTER SYSTEM OR A SYSTEM WITH PRESSURE COMPENSATED PUMP

The W-1900 can be used as a restrictive type flow control. In this circuit the excess flow port is blocked. This would normally be used with a pressure compensated pump or in a closed center system. It should be noted that whenever these or any valve is used to bypass or restrict flow heat will be generated.



WR-1900 CIRCUIT (W/ RELIEF):

'WR' Models have a built in relief valve that bypasses oil from inlet to the excess flow port when the relief setting is reached. The factory setting is 1500 PSI. The excess flow port must be connected to tank.

ALL MODELS:

NOTE: THREAD SEALANT—
USE OF A QUALITY NON-TEFLON THREAD SEALANT IS RECOMMENDED FOR TAPERED PIPE THREADS.
(USE OF TEFLON TAPE IS NOT RECOMMENDED.)

